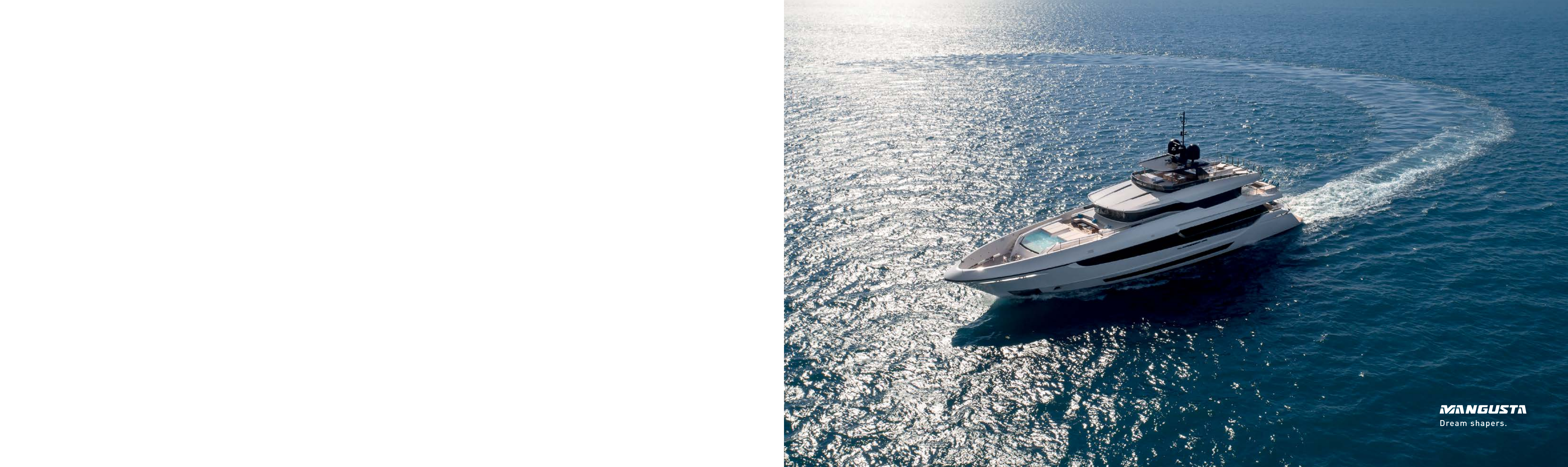


MANGUSTA OCEANO 43

MANGUSTA
Dream shapers.



TRAVEL THE WORLD IN STYLE.

THE RANGE

Freedom is being able to voyage thousands of miles on any ocean at any latitude. The Mangusta Oceano range is a line of pure passage

makers: displacement superyachts for those with no limits to their desire to travel the world in style, whatever the distance or destination.





ONE OF A KIND.

THE MODEL

This award-winning model of ocean-going displacement three-decks, the Mangusta Oceano 43 is one of a kind.

At 450 gross tons, the Mangusta Oceano 43 is a high-volume yacht designed to easily cross the ocean with a range

of 4,500 nautical miles. Behind the feeling of extraordinary space is a continuous dialogue between the interior

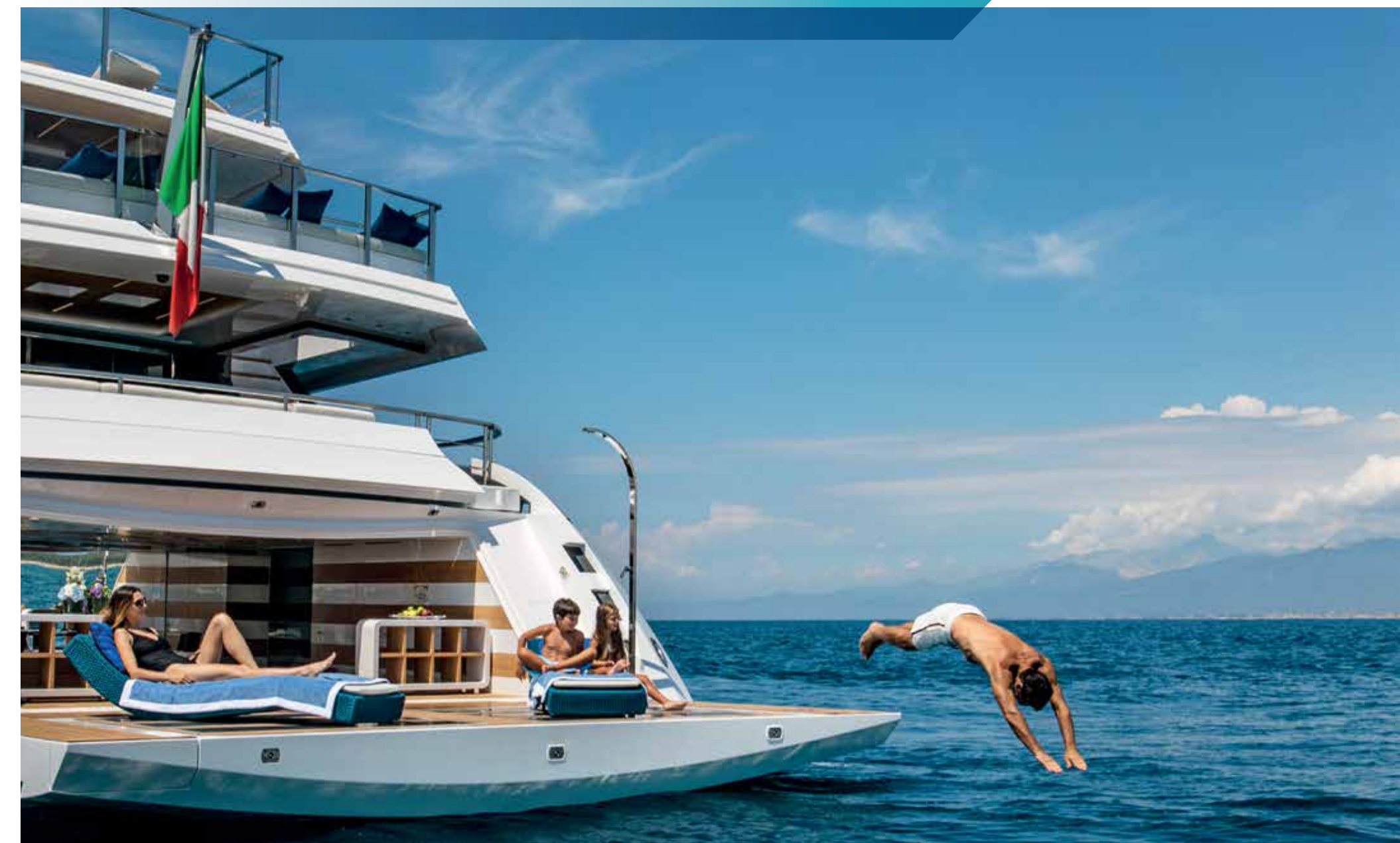
and exterior layout with generous accommodation for 12 guests, a private Owner's balcony, forward tender garage,

infinity pool and dedicated beach club. All packaged in an aggressively sleek profile that belies her volume.











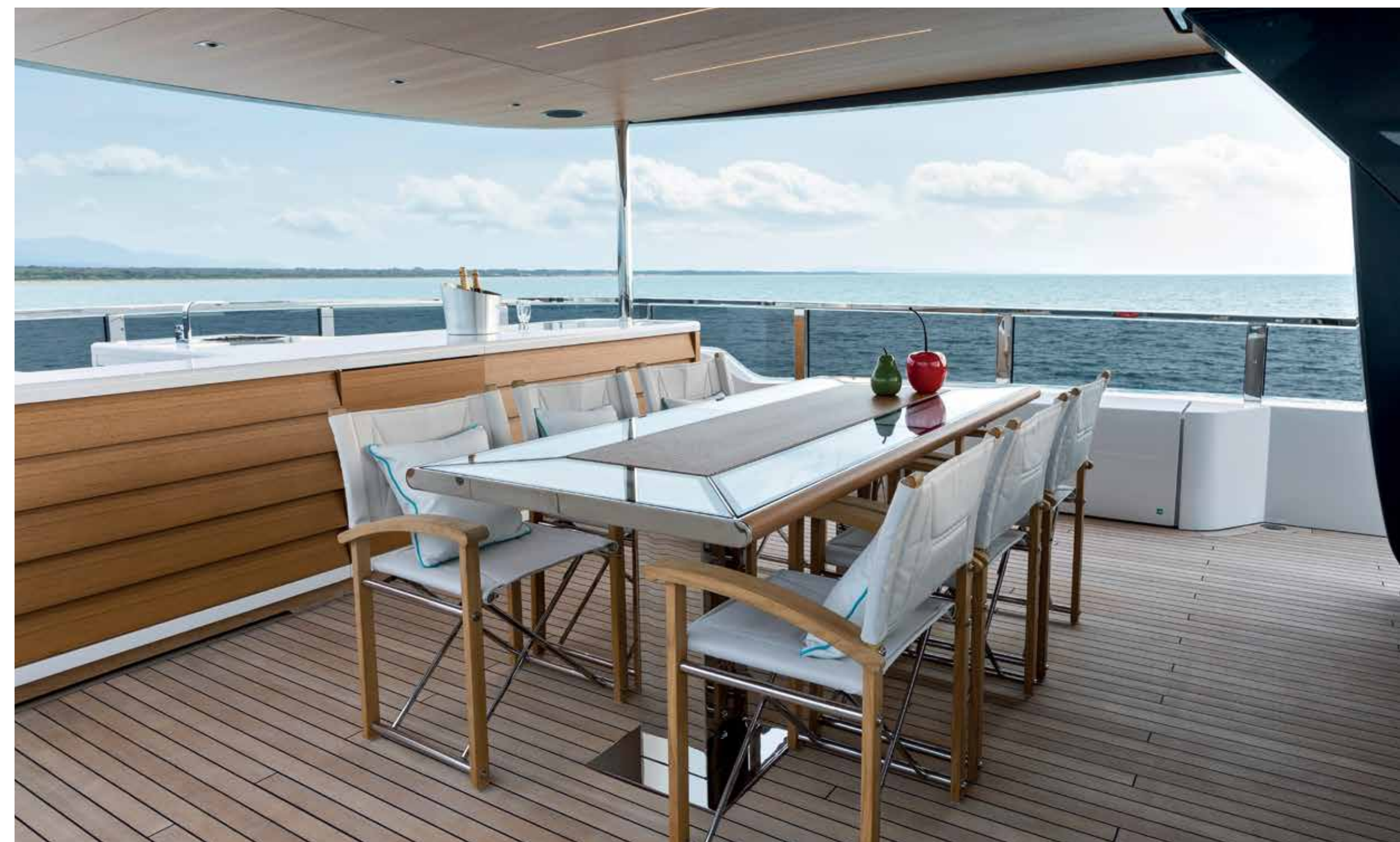
















TAILORED TO MEET YOUR ASPIRATIONS.

THE INTERIOR

Every Mangusta interior is tailored to the tastes and preferences of our Owners. It takes supreme attention to detail to create a home away from home on the water. By selecting only the finest materials and the most talented craftsmen, we ensure that each interior design is totally unique and customised to fit your aspirations like a glove. Because true comfort is also about feeling comfortable.













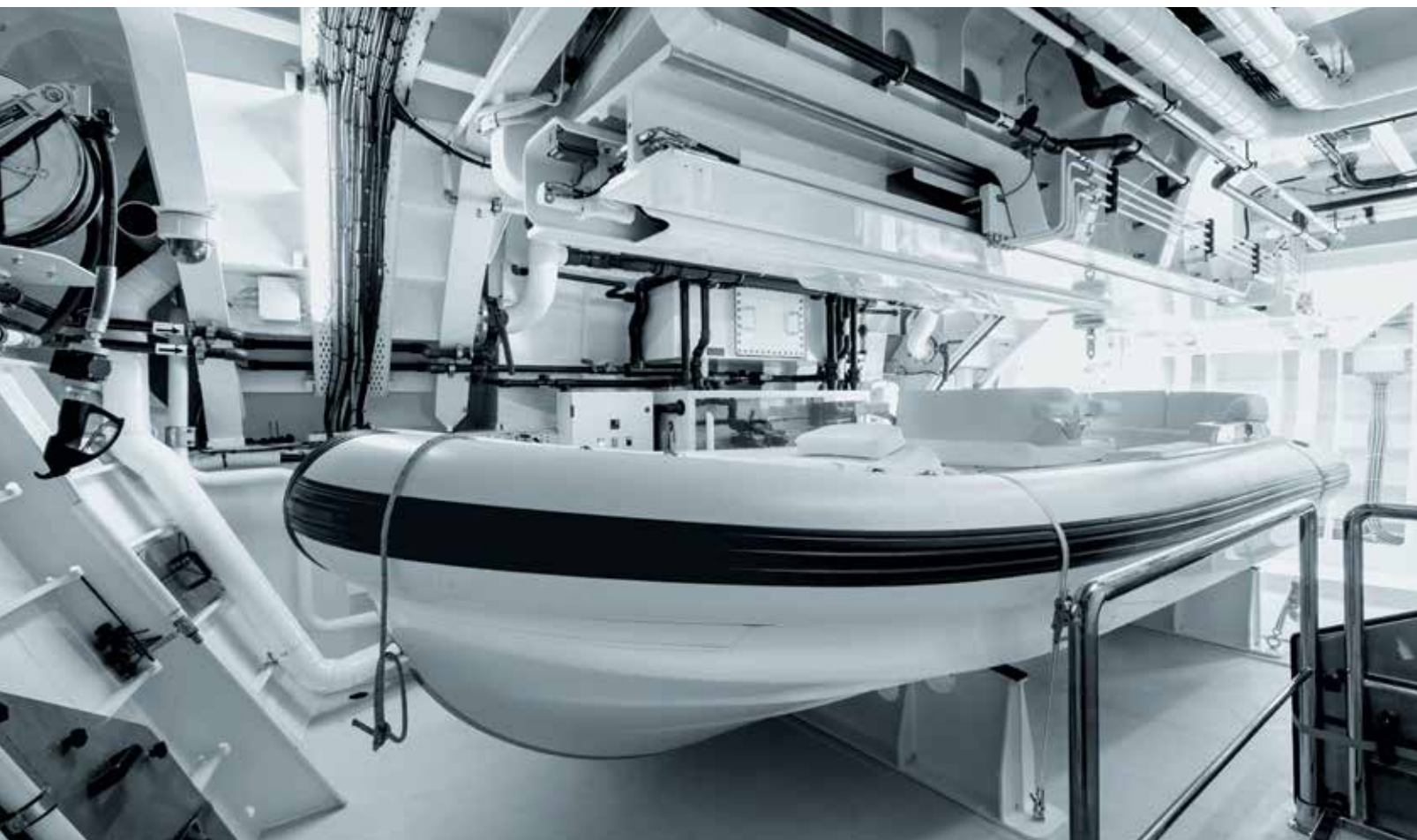












TECHNICAL SPECIFICATIONS MANGUSTA OCEANO 43

CONSTRUCTION

HULL	STEEL
SUPERSTRUCTURE	ALUMINIUM

DIMENSIONS

LENGTH OVERALL	141'	43 M
BEAM	28'	8.70 M
MAX DRAFT	~7'	2.40 M
DISPLACEMENT AT FULL LOAD	~ 870,826 LBS	395 T
DISPLACEMENT AT HALF LOAD	~ 782,641 LBS	355 T
GROSS TONNAGE	450 GT	

TANK CAPACITY

FUEL CAPACITY	~ 16,378 US GALS	62,000 L
WATER CAPACITY	~ 3,170 US GALS	12,000 L

PROPULSION

MAIN ENGINES POWER	2 X MTU 12V 2000 M72 1448 HP @ 2250 RPM (1080 kW)
STABILIZERS	ZERO SPEED AND UNDERWAY

PERFORMANCE

MAX SPEED HALF LOAD	~ 15 KNOTS
RANGE AT ECONOMICAL CRUISING SPEED	UP TO 4,500 NAUTICAL MILES

ACCOMMODATION

GUESTS	UP TO 12 IN 5 CABINS
CREW	7 IN 4 CABINS

DESIGNERS

EXTERIORS	ALBERTO MANCINI / OVERMARINE GROUP
INTERIORS	CUSTOM BUILT BESPOKE INTERIORS

CUSTOM IS KEY.

THE LAYOUT

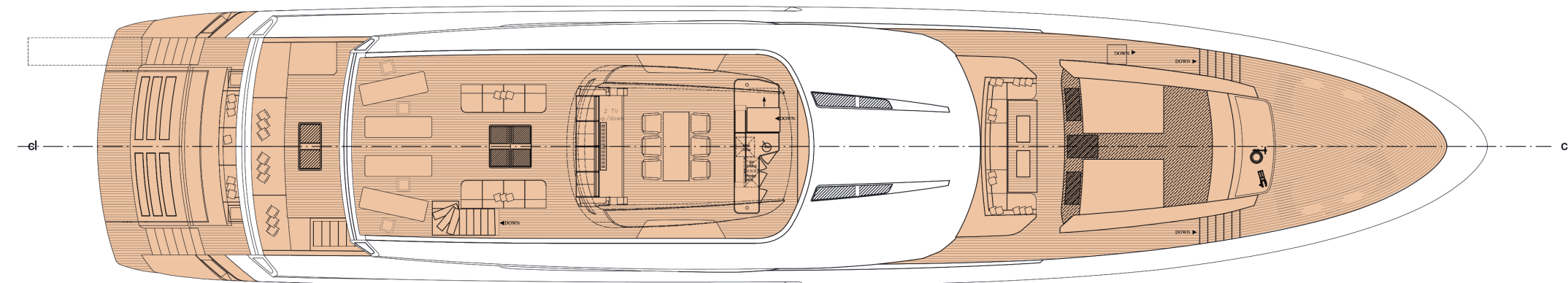
A smart interior and exterior layout determines both the comfort of those on board and the efficient operation of the vessel.

Mangusta defines the standard general arrangement to ensure maximum enjoyment of guests and proper separation of the

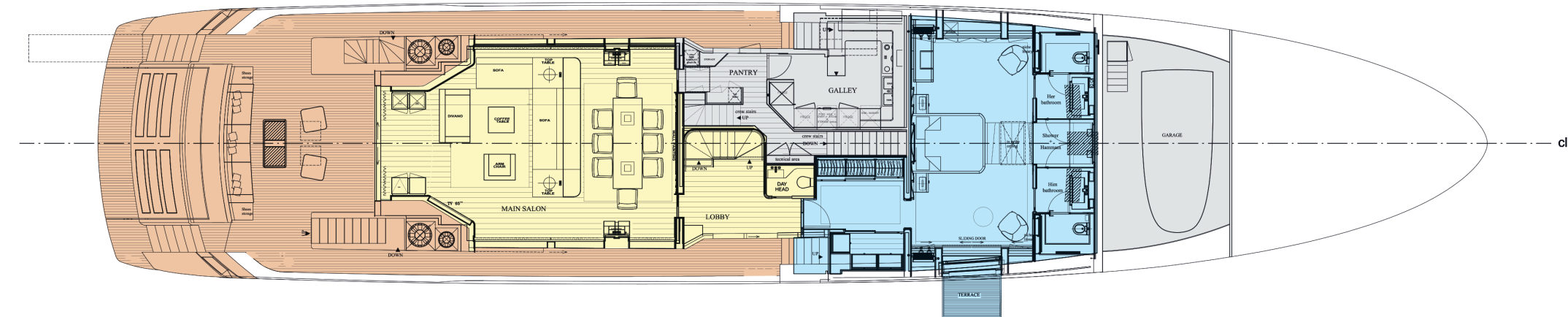
crew areas. But custom is key and Owners are completely free to introduce their own solutions to achieve their ideal yacht.



All information contained herein, including technical and performance data, technical layouts, images and graphic reproductions is provided solely by way of information. All technical and/or descriptive information only refers to the features of the yacht shown in this brochure. Consequently any binding information which is the seller's responsibility will be provided exclusively in the bill of sale and specific manual.

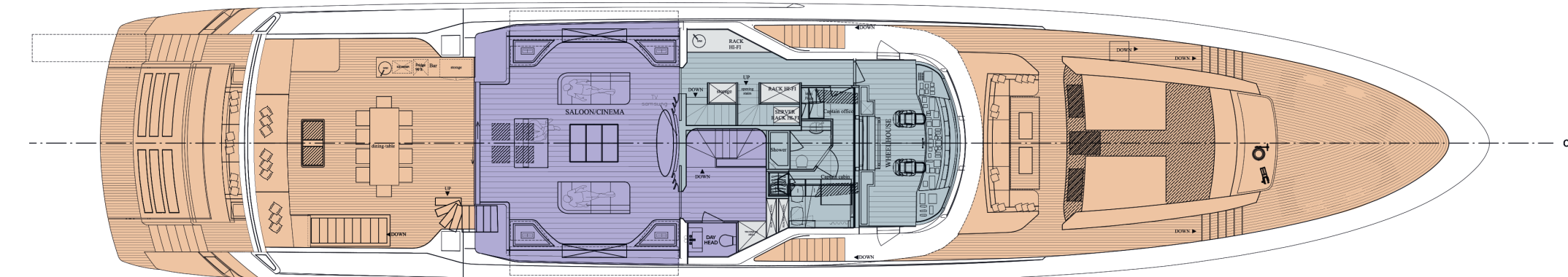


FLY DECK



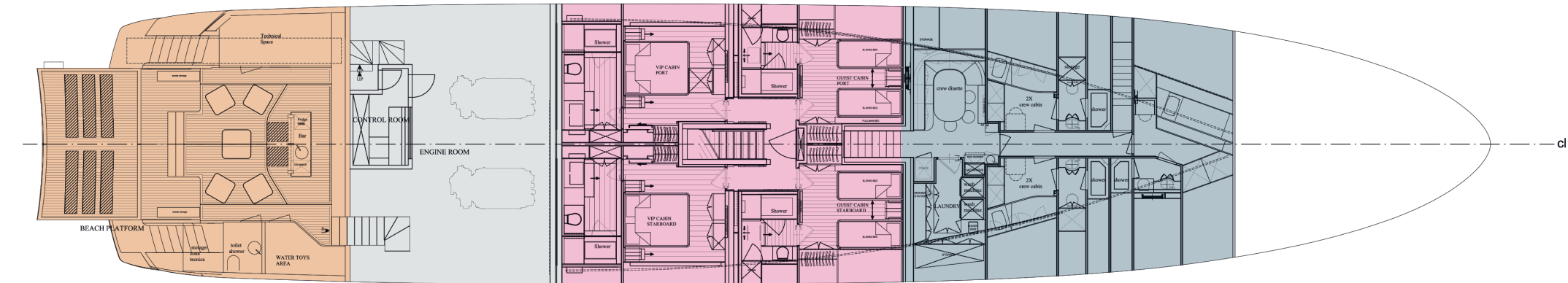
MAIN DECK

- MAIN SALOON & LOBBY
- OWNER'S SUITE
- SERVICE AREA



UPPER DECK

- UPPER SALOON & LOBBY
- CAPTAIN AREA
- SERVICE AREA



LOWER DECK

- GUESTS AREA
- CREW AREA
- SERVICE AREA



MANGUSTA