



E Series  
56ft - 98ft







## Horizon E Series



Redefining Luxury



E Series



# E Series

SLEEK AND STYLISH

E56 | E56XO | E62 | E75 | E78 | E84 | E88 | E98

Horizon's most popular series, the E Series blends luxury and elegance with functional design in classic flybridge motoryachts from 56 to 98 feet. Enclosed Bridge and Cockpit motoryacht versions are offered on select models with a multitude of layout options, allowing the E Series to satisfy virtually any cruising lifestyle.



E98

















The standard layout includes a main salon, formal dining, galley, and country kitchen forward on the main deck. As shown, this layout has no formal dining and instead offers an enlarged salon and breakfast bar.





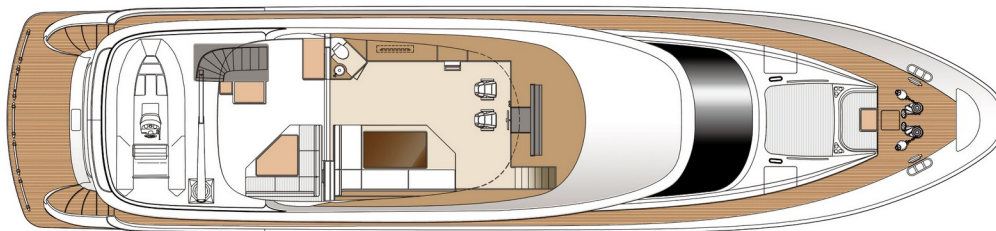
# E98 *Skylounge*

## *Technical Specifications*



|                            |                                                |
|----------------------------|------------------------------------------------|
| L.O.A                      | 99'-6" (30.33m)                                |
| L.W.L                      | 86'-3" (26.30m)                                |
| Beam                       | 23'-2 3/8" (7.07m)                             |
| Draft                      | 6'-0" (1.83m)                                  |
| Displacement (half load)   | 235,890 lbs (107 tons)                         |
| Fuel                       | 4,500 US gals (17,000 ltrs)                    |
| Fresh Water                | 600 US gals (2,270 ltrs)                       |
| Engines                    | Twin CAT C32A - 1600hp                         |
| Generator                  | Twin Onan 35kW (50Hz) or Twin N.L. 38kW (60Hz) |
| Max Speed (half load)      | 20.5 knots                                     |
| Cruising Range (half load) | 1500 nm @ 12 knots                             |

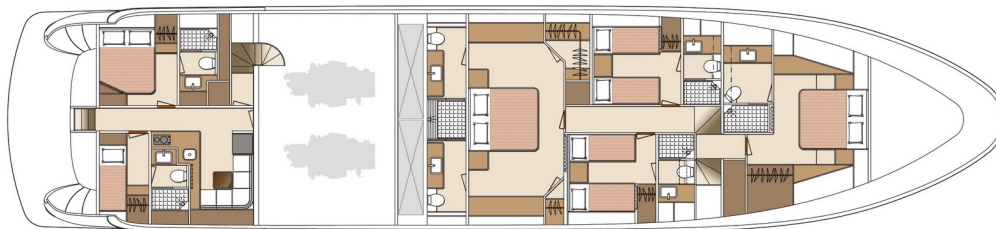
\*Optional items may be included in the drawing and are for reference only.



UPPER DECK



MAIN DECK



LOWER DECK

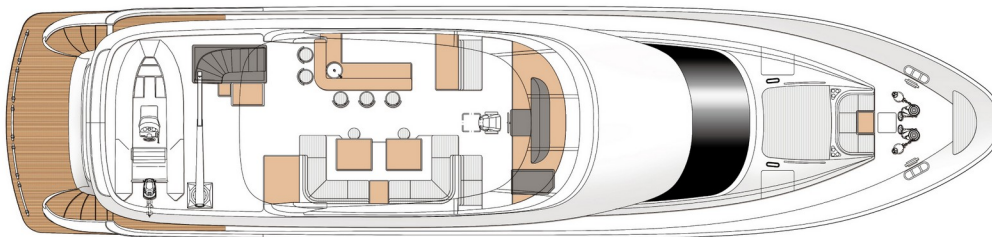
# E98 *Open Bridge*

## *Technical Specifications*



\*Optional items may be included in the drawing and are for reference only.

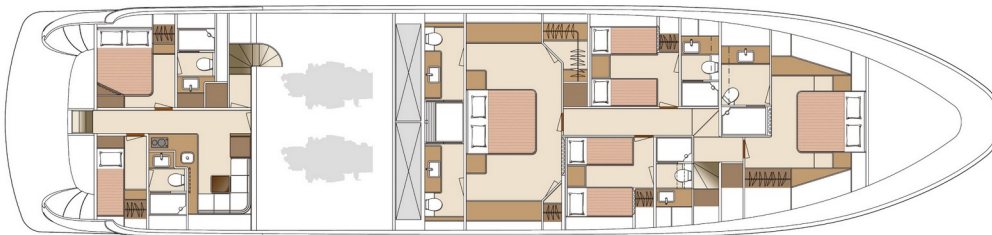




UPPER DECK



MAIN DECK



LOWER DECK



E88





A voluminous beach club and a thoughtfully-designed foldout swim ladder are perfect for water activities.







Custom outdoor LED lighting provides a modern ambience.









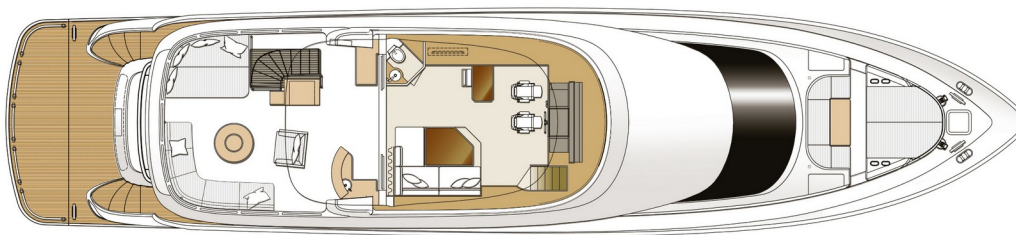
# E88

*Skylounge*  
*Technical Specifications*

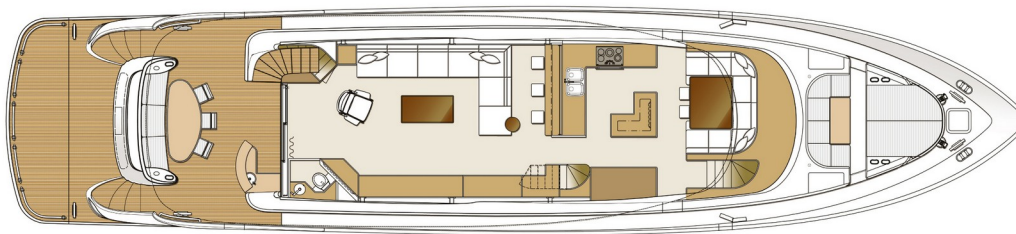


|                            |                                                  |
|----------------------------|--------------------------------------------------|
| L.O.A                      | 89'-4 1/2" (27.24m)                              |
| L.W.L                      | 77'-1/2" (23.48m)                                |
| Beam                       | 21'-0" (6.40m)                                   |
| Draft                      | 5'-4 1/2" (1.64m)                                |
| Displacement (half load)   | 182,300 lbs (82.7 tons)                          |
| Fuel                       | 2,700 US gals (10,220 ltrs)                      |
| Fresh Water                | 500 US gals (1,890 ltrs)                         |
| Engines                    | Twin CAT C32A - 1600hp or Twin MAN V12-1550hp    |
| Generator                  | Twin Onan 22.5kW (50Hz) or Twin Onan 29kW (60Hz) |
| Max Speed (half load)      | 23 knots                                         |
| Cruising Range (half load) | 1400 nm @ 10 knots                               |

\*Optional items may be included in the drawing and are for reference only.



UPPER DECK



MAIN DECK



LOWER DECK

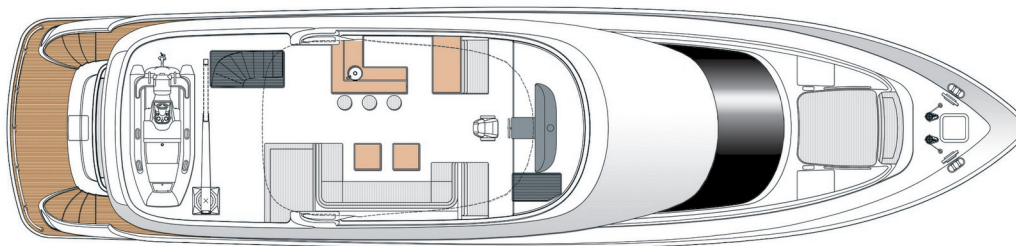
# E88

*Open Bridge*  
*Technical Specifications*

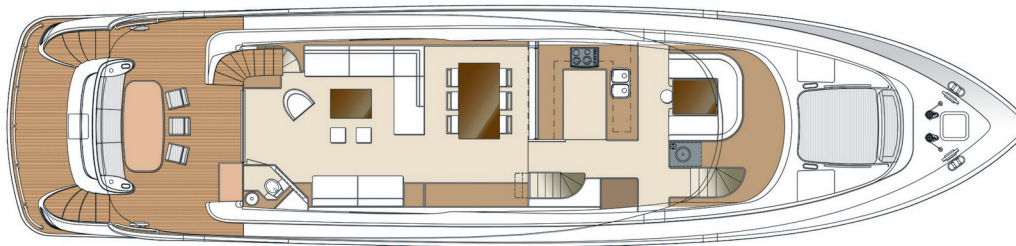


\*Optional items may be included in the drawing and are for reference only.

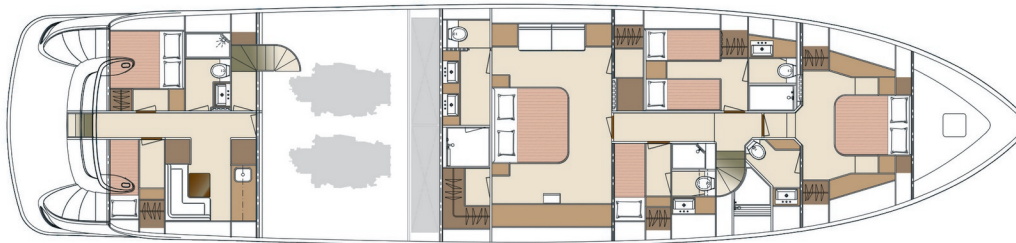




UPPER DECK



MAIN DECK



LOWER DECK



E84



















# E84 *Skylounge*

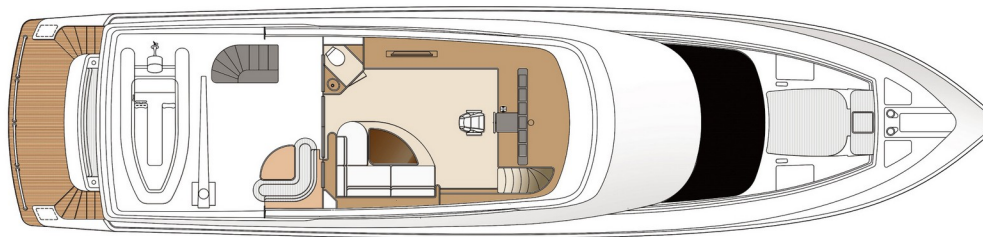
## *Technical Specifications*



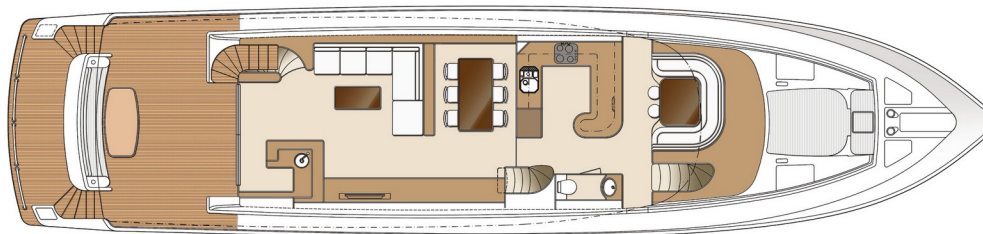
|                            |                                                  |
|----------------------------|--------------------------------------------------|
| L.O.A                      | 85'-0" (25.91m)                                  |
| L.W.L                      | 73'-1" (22.28m)                                  |
| Beam                       | 20'-0" (6.10m)                                   |
| Draft                      | 5'-9" (1.76m)                                    |
| Displacement (half load)   | 159,800 lbs (72.5 tons)                          |
| Fuel                       | 2,250 US gals (8,500 ltrs)                       |
| Fresh Water                | 420 US gals (1,600 ltrs)                         |
| Engines                    | Twin CAT C32A - 1600hp or Twin MAN V12-1550hp    |
| Generator                  | Twin Onan 22.5kW (50Hz) or Twin Onan 29kW (60Hz) |
| Max Speed (half load)      | 25 knots                                         |
| Cruising Range (half load) | 1100 nm @ 11 knots                               |

\*Optional items may be included in the drawing and are for reference only.

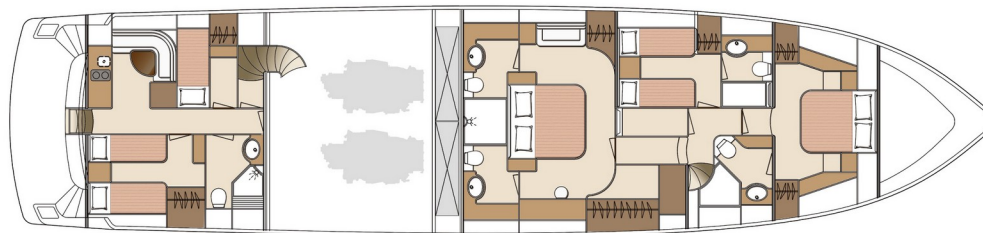




UPPER DECK



MAIN DECK



LOWER DECK

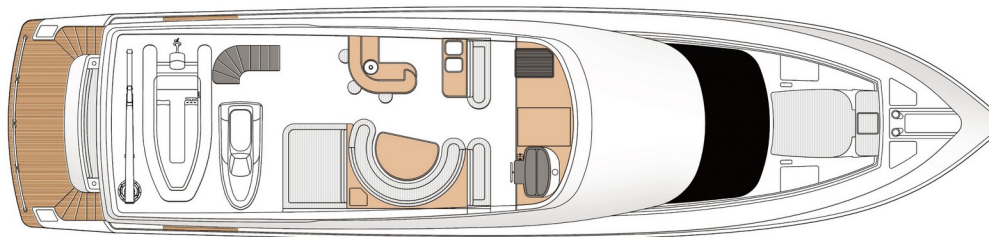
# E84 *Open Bridge*

## *Technical Specifications*

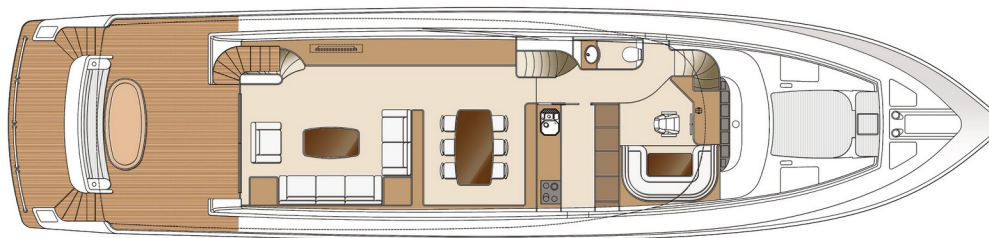


\*Optional items may be included in the drawing and are for reference only.

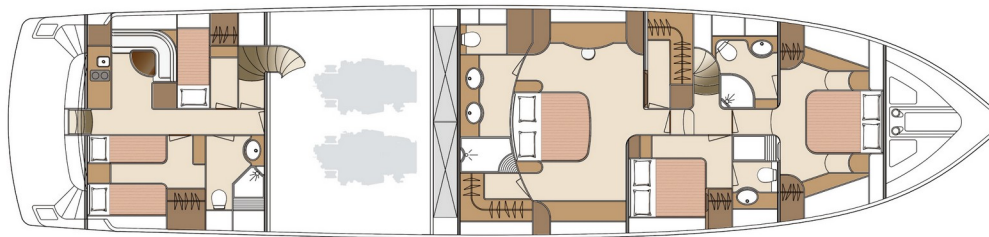




UPPER DECK



MAIN DECK



LOWER DECK

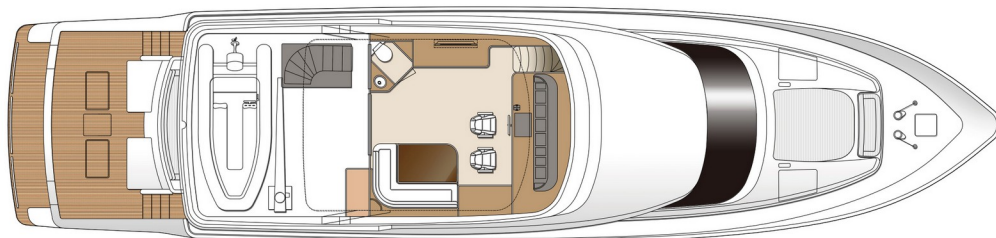
# E84 Cockpit

*Technical Specifications*

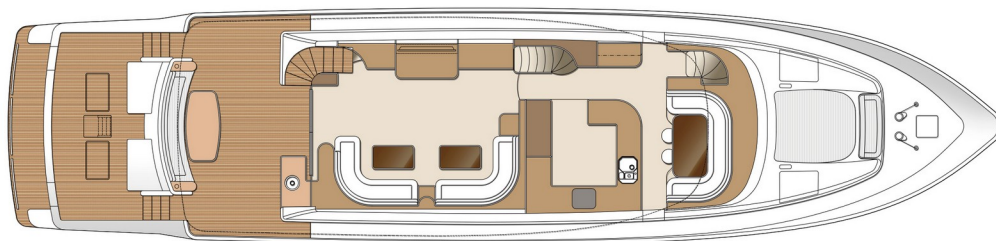


\*Optional items may be included in the drawing and are for reference only.

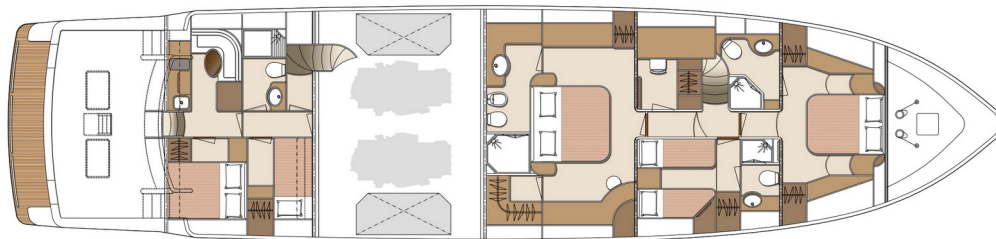




UPPER DECK



MAIN DECK



LOWER DECK



# E78



Customized features, such as the innovative hydraulic hard top, set the E78 apart in her class.



















# E78 *Skylounge*

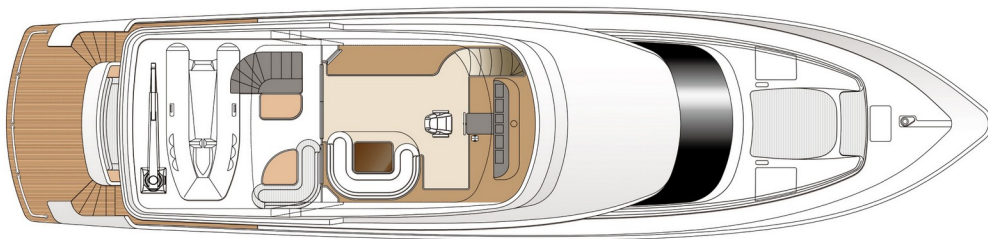
## *Technical Specifications*



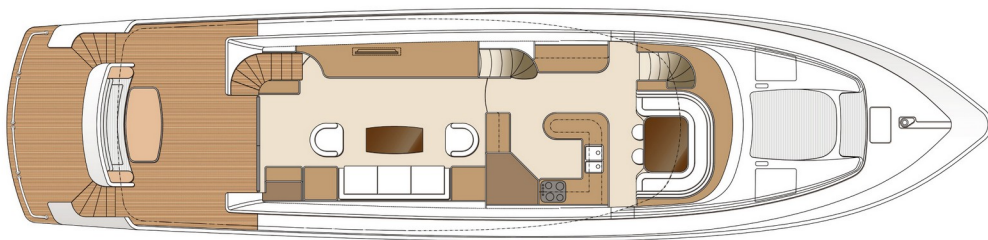
|                            |                                                  |
|----------------------------|--------------------------------------------------|
| L.O.A                      | 78'-6" (23.93m)                                  |
| L.W.L                      | 68'-1" (20.75m)                                  |
| Beam                       | 18'-9" (5.70m)                                   |
| Draft                      | 5'-7" (1.70m)                                    |
| Displacement (half load)   | 144,400 lbs (65.5 tons)                          |
| Fuel                       | 1,850 US gals (7,000 ltrs)                       |
| Fresh Water                | 400 US gals (1,500 ltrs)                         |
| Engines                    | Twin CAT C32A - 1600hp or Twin MAN V12-1550hp    |
| Generator                  | Twin Onan 22.5kW (50Hz) or Twin Onan 29kW (60Hz) |
| Max Speed (half load)      | 25 knots                                         |
| Cruising Range (half load) | 900 nm @ 11 knots                                |

\*Optional items may be included in the drawing and are for reference only.

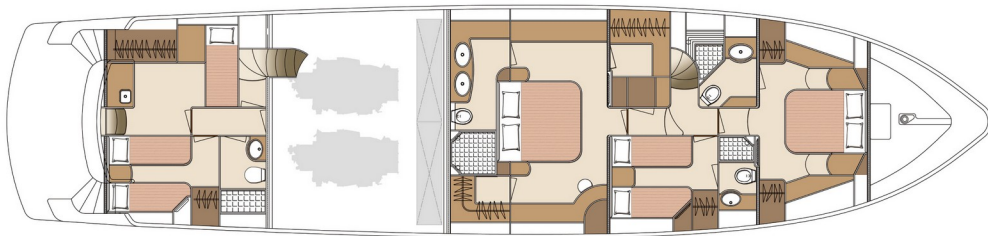




UPPER DECK



MAIN DECK



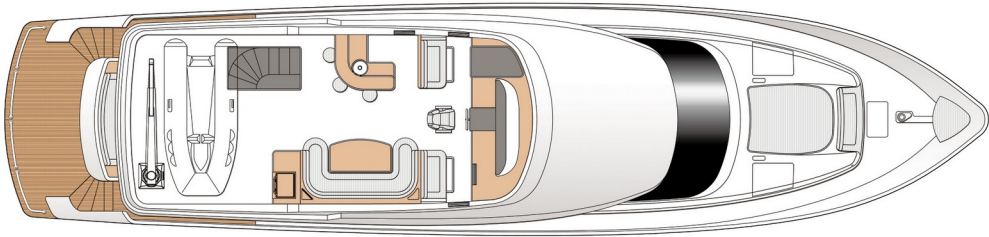
LOWER DECK

# E78

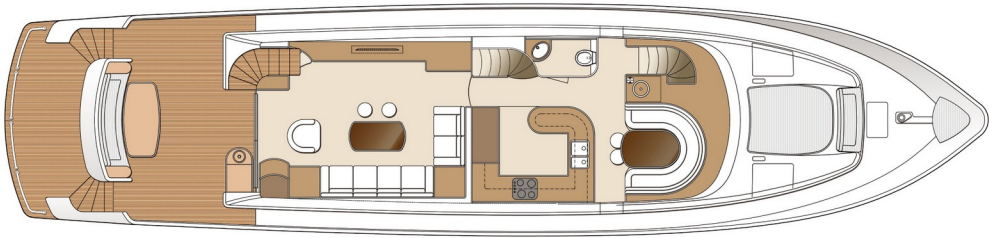
*Open Bridge*  
*Technical Specifications*



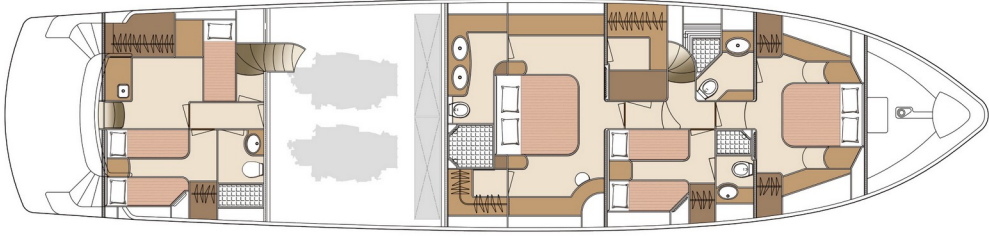
\*Optional items may be included in the drawing and are for reference only.



UPPER DECK



MAIN DECK



LOWER DECK



# E75





















# E75 *Skylounge*

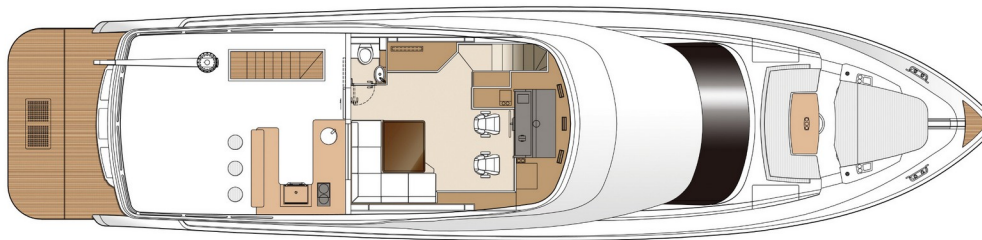
## *Technical Specifications*



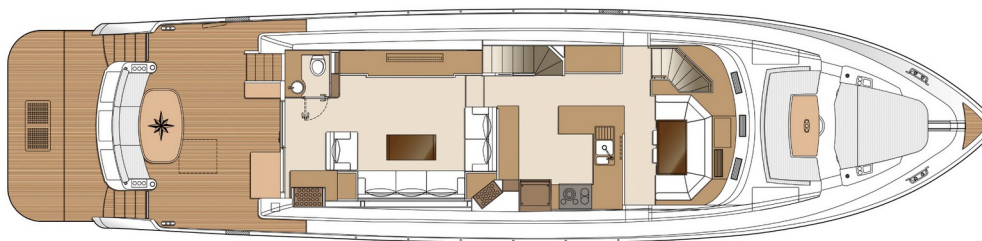
|                            |                                                  |
|----------------------------|--------------------------------------------------|
| L.O.A                      | 76'-3" (23.24m)                                  |
| L.W.L                      | 64'-8 3/4" (19.73m)                              |
| Beam                       | 18'-6" (5.64m)                                   |
| Draft                      | 5'-9" (1.75m)                                    |
| Displacement (half load)   | 123,679 lbs (56.1 tons)                          |
| Fuel                       | 1,720 US gals (6,500 ltrs)                       |
| Fresh Water                | 400 US gals (1,500 ltrs)                         |
| Engines                    | Twin Caterpillar C18 ACERT-1136bhp               |
| Generator                  | Twin Onan 22.5kW (50Hz) or Twin Onan 29kW (60Hz) |
| Max Speed (half load)      | 22.3 knots                                       |
| Cruising Range (half load) | 374 nm @ 19.2 knots                              |

\*Optional items may be included in the drawing and are for reference only.

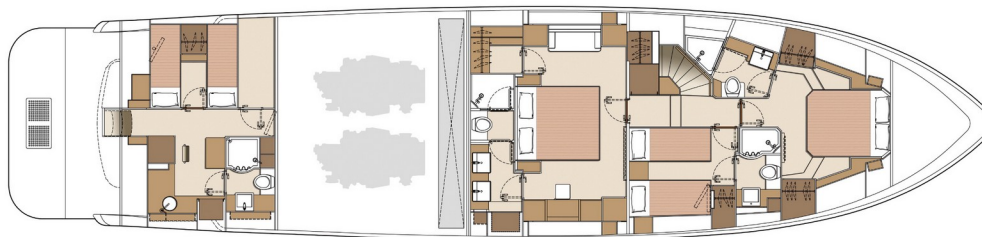




UPPER DECK



MAIN DECK



LOWER DECK

# E75 *Skylounge*

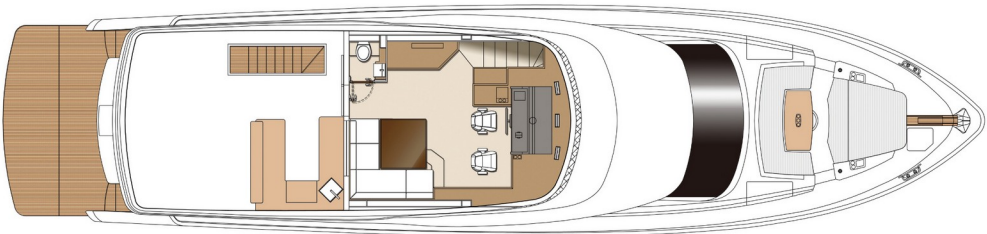
## *Technical Specifications*



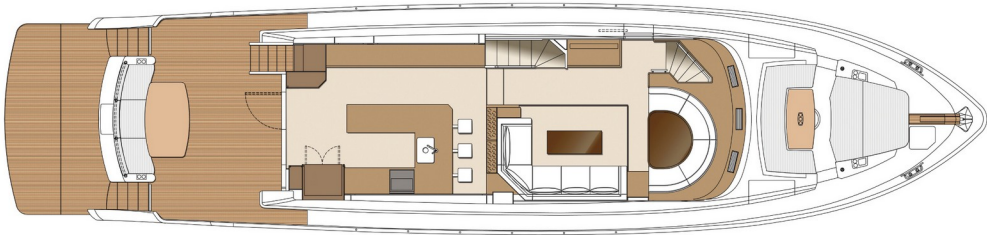
\*Optional items may be included in the drawing and are for reference only.



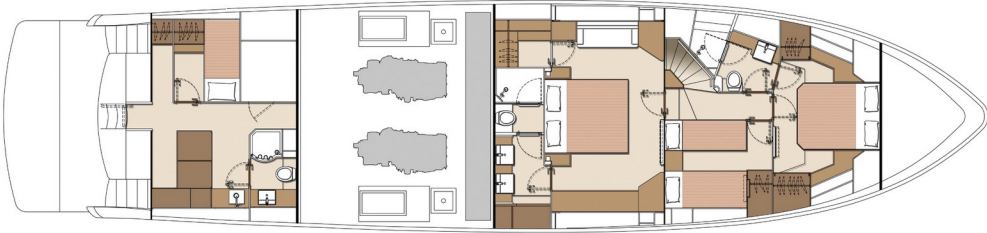
Galley Aft Layout



UPPER DECK



MAIN DECK



LOWER DECK

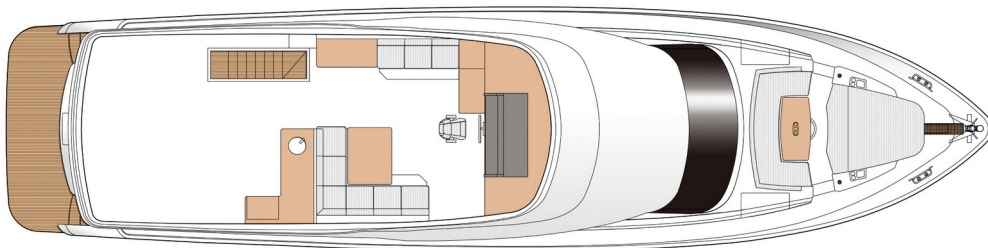
# E75 *Open Bridge*

## *Technical Specifications*

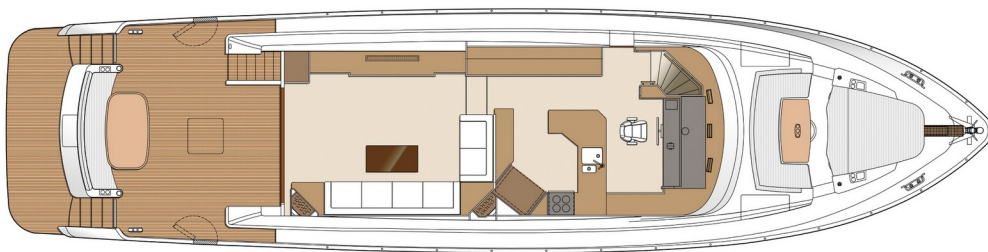


\*Optional items may be included in the drawing and are for reference only.





UPPER DECK



MAIN DECK



LOWER DECK

E62









The E62 is packed with amenities for the active cruiser, such as the live bait tank in the cockpit.





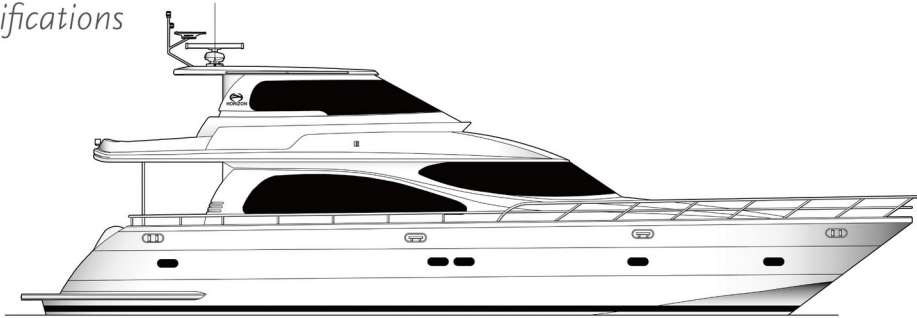






# E62 *Skylounge*

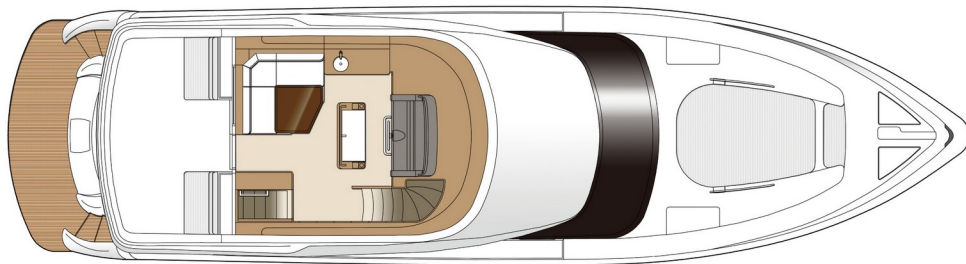
## *Technical Specifications*



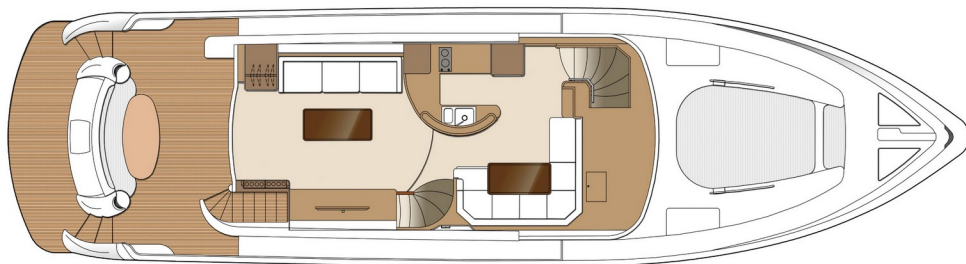
|                            |                                        |
|----------------------------|----------------------------------------|
| L.O.A                      | 64'-5" (19.63m)                        |
| L.W.L                      | 53'-3" (16.23m)                        |
| Beam                       | 17'-5" (5.30m)                         |
| Draft                      | 5'-9" (1.75m)                          |
| Displacement (half load)   | 89,794 lbs (40.73 tons)                |
| Fuel                       | 1,000 US gals (3,785 ltrs)             |
| Fresh Water                | 350 US gals (1,325 ltrs)               |
| Engines                    | Twin Caterpillar C18 ACERT-1136hp      |
| Generator                  | Onan 13.5kW (50Hz) or Onan 17kW (60Hz) |
| Max Speed (half load)      | 25.7 knots                             |
| Cruising Range (half load) | 251 nm @ 22.2 knots                    |

\*Optional items may be included in the drawing and are for reference only.

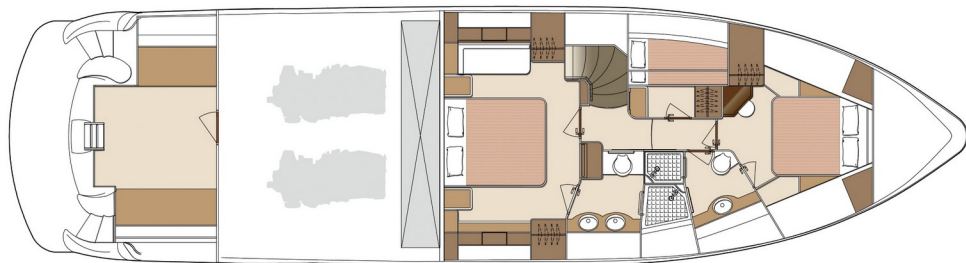




UPPER DECK



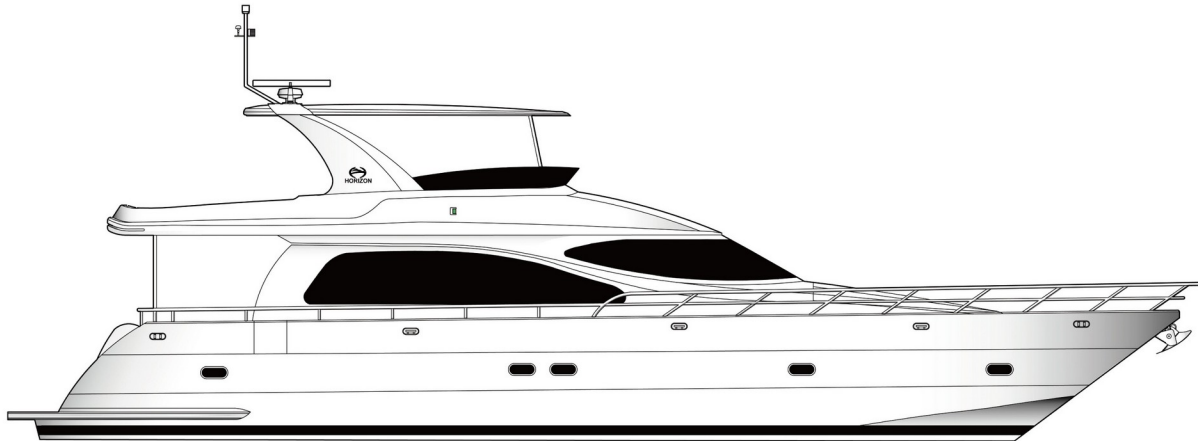
MAIN DECK



LOWER DECK

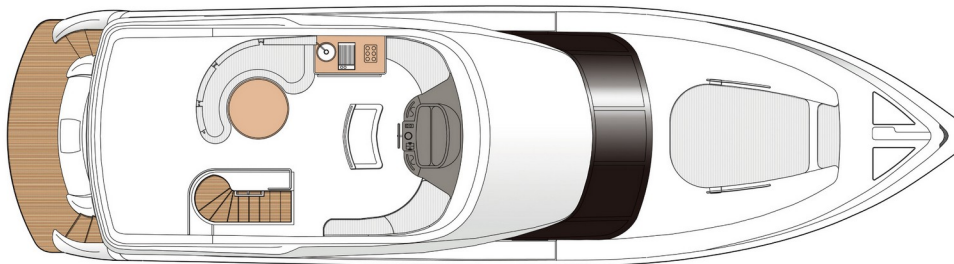
# E62 *Open Bridge*

## *Technical Specifications*

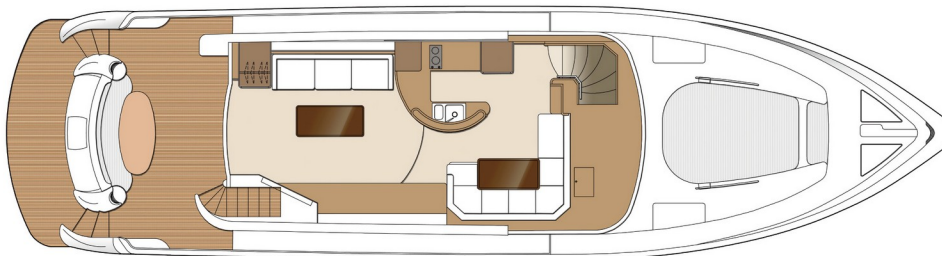


\*Optional items may be included in the drawing and are for reference only.

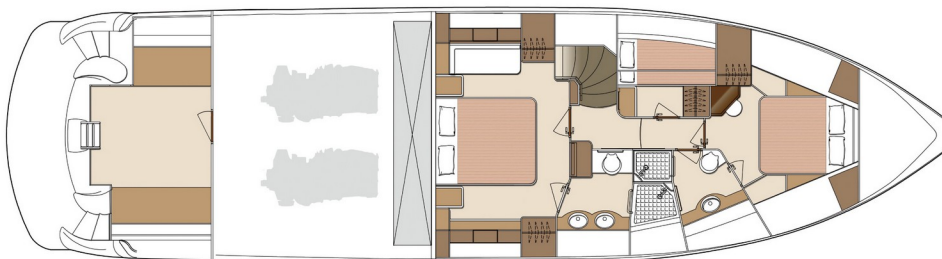




UPPER DECK



MAIN DECK



LOWER DECK

# E56XO







For alfresco fun, the aft deck features a dining area as well as a live bait tank, BBQ, prep sink, and storage.



The galley is easily accessible to the aft deck for seamless entertaining.











# E56XO

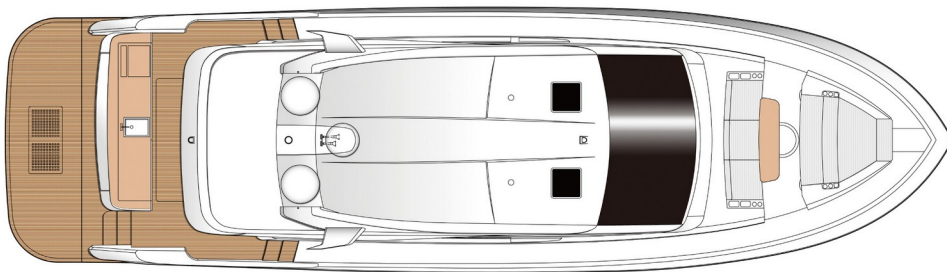
## *Technical Specifications*



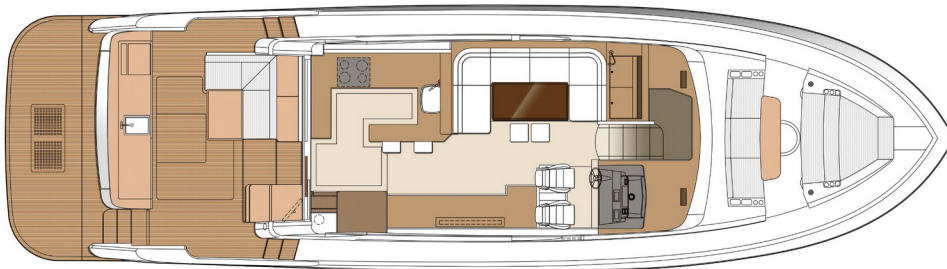
|                            |                                          |
|----------------------------|------------------------------------------|
| L.O.A                      | 56'-0" (17.07m)                          |
| L.W.L                      | 44'-10" (13.67m)                         |
| Beam                       | 15'-9" (4.80m)                           |
| Draft                      | 4'-5" (1.35m)                            |
| Displacement (half load)   | 54,454 lbs (23.80 tons)                  |
| Fuel                       | 800 US gals (3,028 ltrs)                 |
| Fresh Water                | 195 US gals (738 ltrs)                   |
| Engines                    | Twin Volvo Penta IPS 950 (725hp)         |
| Generator                  | Onan 13.5kW (50Hz) or Onan 17.0kW (60Hz) |
| Max Speed (half load)      | 32.4 knots                               |
| Cruising Range (half load) | 350 nm @ 27.5 knots                      |

\*Optional items may be included in the drawing and are for reference only.

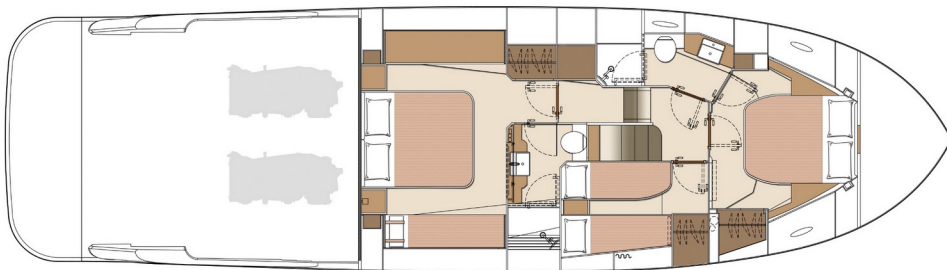




UPPER DECK



MAIN DECK



LOWER DECK



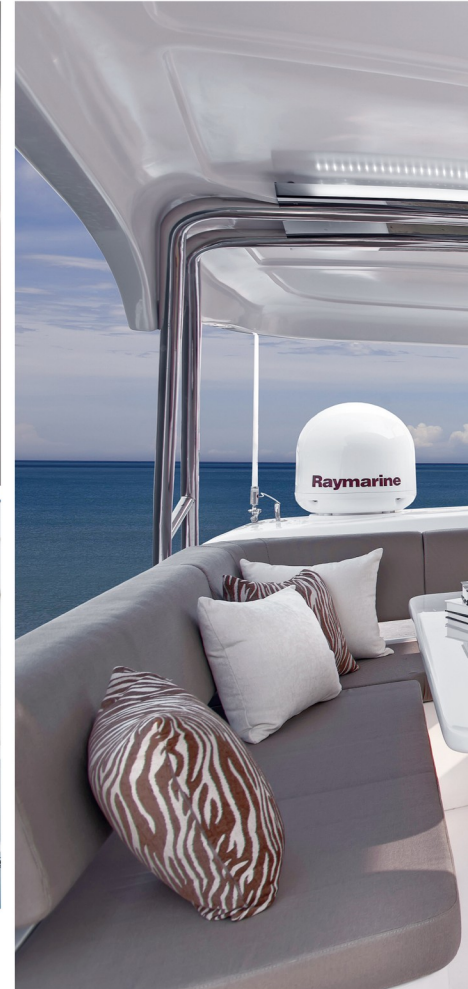
E56











Multifunctional storage and a Hi/Lo hydraulic platform are located on the aft deck.







A large side window maximizes natural light and complements the custom interior LEDs.





# E56

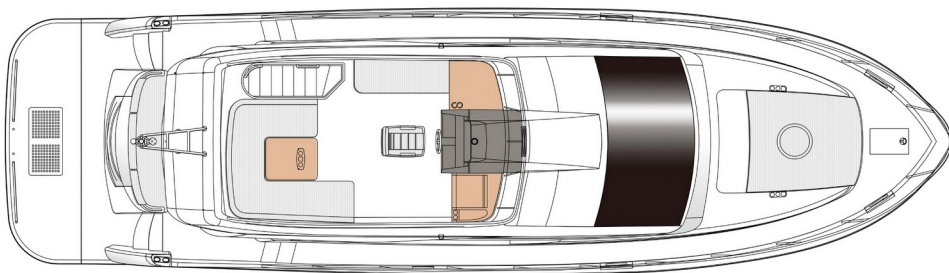
## *Technical Specifications*



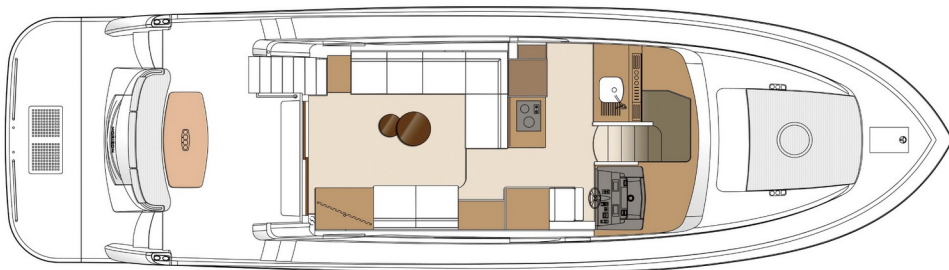
|                            |                                          |
|----------------------------|------------------------------------------|
| L.O.A                      | 56'-0" (17.07m)                          |
| L.W.L                      | 44'-10" (13.67m)                         |
| Beam                       | 15'-9" (4.80m)                           |
| Draft                      | 4'-5" (1.35m)                            |
| Displacement (half load)   | 58,422 lbs (26.50 tons)                  |
| Fuel                       | 660 US gals (2,500 ltrs)                 |
| Fresh Water                | 160 US gals (600 ltrs)                   |
| Engines                    | Twin Volvo Penta IPS 950 (725hp)         |
| Generator                  | Onan 13.5kW (50Hz) or Onan 17.0kW (60Hz) |
| Max Speed (half load)      | 33.7 knots                               |
| Cruising Range (half load) | 300 nm @ 28.6 knots                      |

\*Optional items may be included in the drawing and are for reference only.

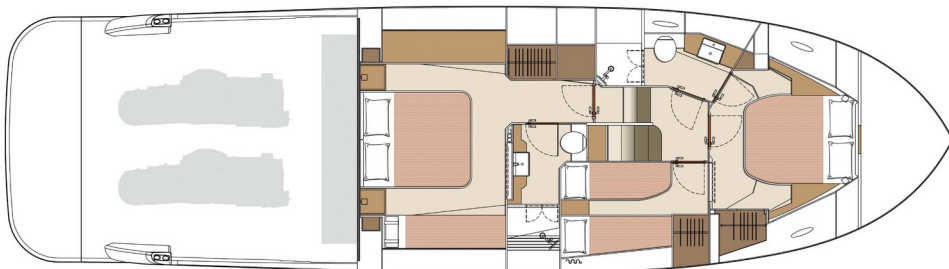




UPPER DECK



MAIN DECK



LOWER DECK

# Horizon Core Values

**1** and only SYBAss member in Asia

**30+** years as a luxury yacht builder

Top **10 largest** & top **5 custom** yacht builder in the world

**13**th consecutive winner of Asia Boating Awards

**790** luxury yachts delivered worldwide

**8** yacht series with over **25** models

Sales and support in **5** continents

**800** professional yacht builders, including **300+** master craftsmen

Over **1,130,000** sq ft area, with **4** specialized shipyards for building our yachts





# Horizon Achievements



## SUPERYACHT BUILDERS ASSOCIATION

Since 1987, Horizon Group has delivered over 100 superyachts, which is the largest number delivered by any yacht builder in Asia. We joined SYBAss in 2010 and remain the only qualified luxury yacht builder and SYBAss member in the Far East to date. Horizon's superior yacht quality and advanced build technology is highly competitive with other top superyacht builders around the globe, and we also actively promote the superyacht lifestyle and experience as members of SYBAss.

[www.sybass.org](http://www.sybass.org)



## THE WORLD SUPERYACHT AWARDS

The World Superyacht Awards is the most prestigious awards programs for superyachts over 100 feet. Each year, a panel of judges selects the best 100+ superyachts, within various categories, that have been delivered to their owners within the past year. In 2009 the Horizon P130 "Miss Rose" was selected as a Finalist, and in 2010 the Horizon RP120 "Espresso" was Finalist; the Horizon RP120 "Muses" and P136 "Angara" were both 2012 Finalists. The Horizon RP110 "Esther 7" was a Finalist in the 2015 World Superyacht Awards.

[www.worldsuperyachtawards.com](http://www.worldsuperyachtawards.com)



## ASIA BOATING AWARDS

Founded in 2005, the Asia Boating Awards recognizes and selects the best performing shipyards and their outstanding achievements within the Asian yachting industry for the past year. Horizon is the only Taiwan yacht builder with an unbreakable record of 12 consecutive "Best Asian Yacht Builder" awards since 2006. Horizon Group CEO John Lu received the "Personality of the Year" award in 2015. In 2018, the Horizon FD85 was awarded "Best Asian Built Yacht". The Asia Boating Awards is an annual event organized by famous Asian yacht magazines Asia Pacific Boating and China Boating.

[www.asiaboatingawards.com](http://www.asiaboatingawards.com)



**TAIWAN  
EXCELLENCE**

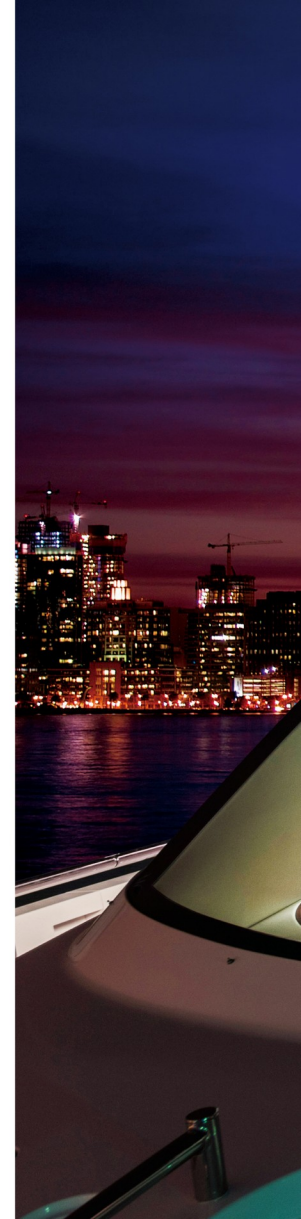


**TAIWAN  
EXCELLENCE**

## TAIWAN EXCELLENCE

Taiwan Excellence is the premier award for "made in Taiwan" products and presented only to revolutionary high quality and high value products. The Gold Award – the highest honor that a company can achieve within Taiwan Excellence – is awarded to the top 10 finalists out of 1,000 Taiwan products reviewed by expert judges. Horizon received our first Taiwan Excellence award in 2010, and we have won an award each subsequent year for the outstanding features in and performance of our luxury yachts. In 2018, the Horizon FD85 was awarded our eighth Taiwan Excellence award trophy.

[www.taiwanexcellence.org](http://www.taiwanexcellence.org)







*You dream, we deliver*



EP SERIES  
69-150ft



P SERIES  
110-130ft



RP SERIES  
97-120ft



FD SERIES  
77-125ft



*8 series, over 25 models*



E SERIES  
56-98ft



V SERIES  
68-80ft



PC SERIES  
52-74ft



CC SERIES  
80ft above



## Define Your Horizon

All specifications and information inside are subject to change.





Define Your Horizon

[www.horizonyacht.com](http://www.horizonyacht.com)