

PREDATOR / 80



SEEK

*We believe that to stop seeking
in life is to stop living.*

*Which is why we never let the sun set
without knowing we looked for more.*

The most innovative design.

Exhilarating engineering.

Jaw-dropping performance.

Breathtaking attention to detail.

*Awe-inspiring motoryachts to make the
heart race and the soul sing.*

*By daring to go where others don't, we'll
take you to places others only dream of.*

*To do this, we constantly
seek perfection.*

*And then, when we think
we've found it?*

We seek more.

MORE



CONTENTS

Introduction	04
Heritage	06
Design & Innovation	08
100 over 100FT	10
Craftsmanship	12
Individuality	14
Predator 80	16
General Arrangements	24
Specifications	26
Awards & Achievements	30
Acknowledgements	31



SEEKING A DREAM, MAKING A WORLD

In 1969, Robert and John Braithwaite were two brothers with a dream – to create a boat to surpass anything made before.

That same year, the Braithwaites built the first Sunseeker. It was the seed of a whole new world.

Steadily and surely, the brothers grew their business from their small shipyard in Poole on the south coast of England.

Always seeking better boat building techniques, each craft became more ambitious, more creative – and consequently more successful – than the last.

Now, 50 years on, Sunseeker International has over 80 dealerships networked around the world, delivering over 150 boats a year globally.



EXCELLENCE. ALWAYS

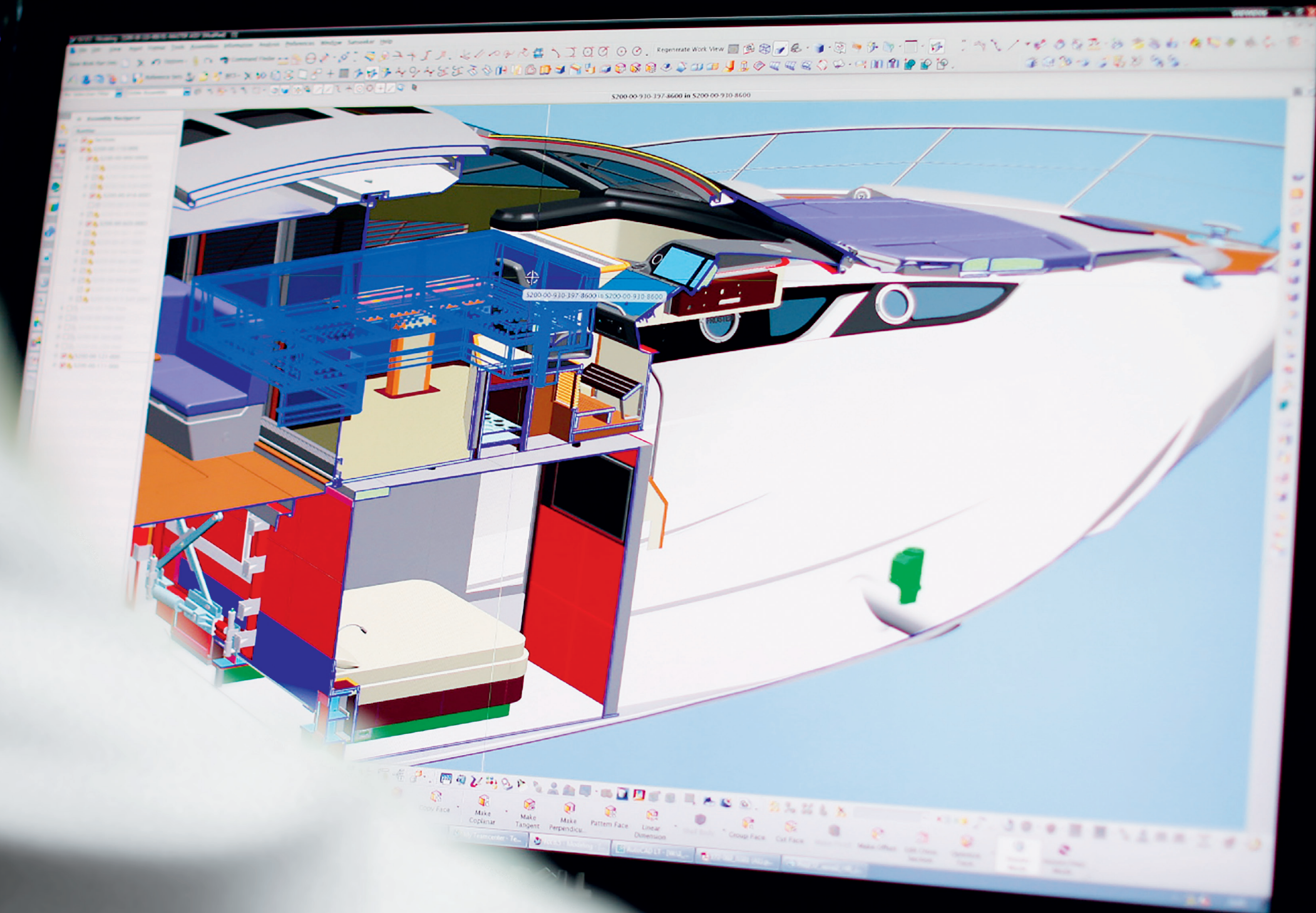
When the Braithwaite brothers started up the engine of a small, open-cockpit speedboat in 1969, it wasn't just the Hostess 17 that roared into life. It was a new standard of yacht making.

Today, their passion to exceed boundaries is as strong as ever before, brought to life by a team of over 2,000 highly skilled designers, engineers and master craftsmen.

Bold new creations like the 155 Yacht keep us pushing our standards ever further, year upon year.

Just as we have always done.

The flagship 155 Yacht is the epitome of our tireless precision and attention to detail. It is this ceaseless desire to always excel in every detail that gives every Sunseeker its vital presence, performance and luxury.



THROUGH INNOVATION COMES EXHILARATION

Intelligent innovation is the philosophy that rules everything we create.

It is why we have become the only manufacturer to produce a luxury yacht range from 50 to 155ft under one name.

Our in-house design team, still steadfastly guided by John Braithwaite, is at the vanguard of marine design, technology and engineering excellence.

It is a dream team with the incomparable vision, confidence and skill to continually innovate our boat design – to create ever more thrilling experiences and adventures. Invention for inspiration.

It is the simple reason why customers the world over await the next Sunseeker with such anticipation.

Because the world knows every new Sunseeker promises innovation that truly exhilarates.



100 OVER 100^{FT}

It is a landmark that signals a bold new age for Sunseeker.

A milestone that measures the sheer breadth of our range of exceptional yachts, built upon a heritage of innovation and craftsmanship spanning 50 years.

On 9 September 2015, we held an exclusive celebration at Cannes Yachting Festival to recognise the delivery of our 100th luxury performance yacht in the 100ft+ superyacht category.

It was summer 2000 that we first launched a model over 100ft long – the unforgettable 105 Yacht, which went on to win two of the world's most prestigious accolades in the International Superyacht Design awards. It was the first step in our journey to become a major player in the superyacht sector.

Amazingly, it has taken just 15 years to reach our newest milestone.

Today, we produce around seven 100ft+ yachts every year. Our range now encompasses boats from the powerful 101 Sport Yacht to the majestic flagship 155 Yacht, with a world of bespoke options in between.

And of course we're always seeking more. With each new creation, a new best is born. Blending cutting-edge technology with traditional handcraft to create yachts that inspire and delight.

96'

97'

98'

99'

101'

102'

103'

104'



EXCEPTIONAL CRAFT, PROUDLY HANDCRAFTED

A hawk's eye, expert hands and a devilish attention to detail.

Passed from generation to generation, these are the most important skills required to make a Sunseeker.

In an age of digital production and automated assembly, we stay committed to creating hand-built, hand-finished boats – for one simple reason.

There is no better way to craft such an exceptional product.

Inside and out, the extraordinary detail, finish and sheer artistry of our yachts can only be achieved by human qualities.

And, most importantly, no machine can ever give our boats such spirit, or take such pride in their creation – a vitality passed on to every owner.



MAKE IT YOUR SIGNATURE

Your signature is truly unique.

No-one else has one quite the same. And so it should be with your very own Sunseeker.

Which is why we have our truly unique Bespoke service, offered for yachts 100ft and above. It offers you something truly unique. A blank sheet of paper for you to create a yacht personalised in any way you wish.

From floor plans to unique furnishings, your imagination and passion can be fully expressed.

With some of Britain's finest in-house interior designers at your side, you can choose materials, fabrics and finishes to reflect your unique desires and individuality.

To give your Sunseeker something no-one else can. Your signature.

Bespoke



PREDATOR 80

Length overall	24.72m	81'1"
Beam	6.09m	20'0"
Draft	2.00m	6'7"
Displacement	56,000kg	123,459lb
Fuel capacity	6,000 litres	1,585 US gal.
Fresh water capacity	1,000 litres	264 US gal.
Black water capacity	185 litres	49 US gal.
Accommodation	Up to 8 guests & up to 3 crew members	
Engine options	Up to 2 x 2640PS	
Performance	Up to 45 knots	
Range	Up to 300 nautical miles	
Drives	Shafts or Arneson surface drives	





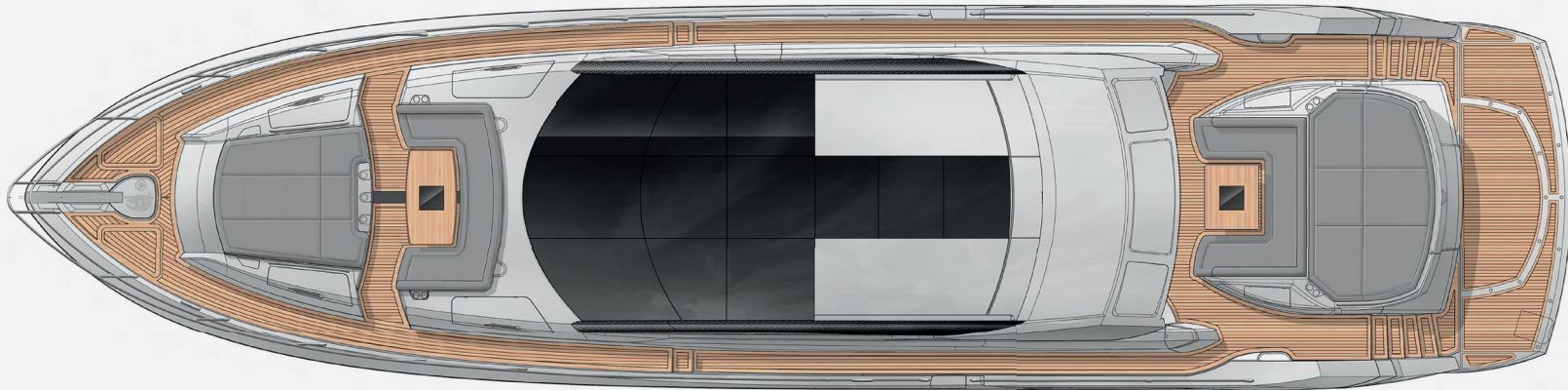


GENERAL ARRANGEMENTS

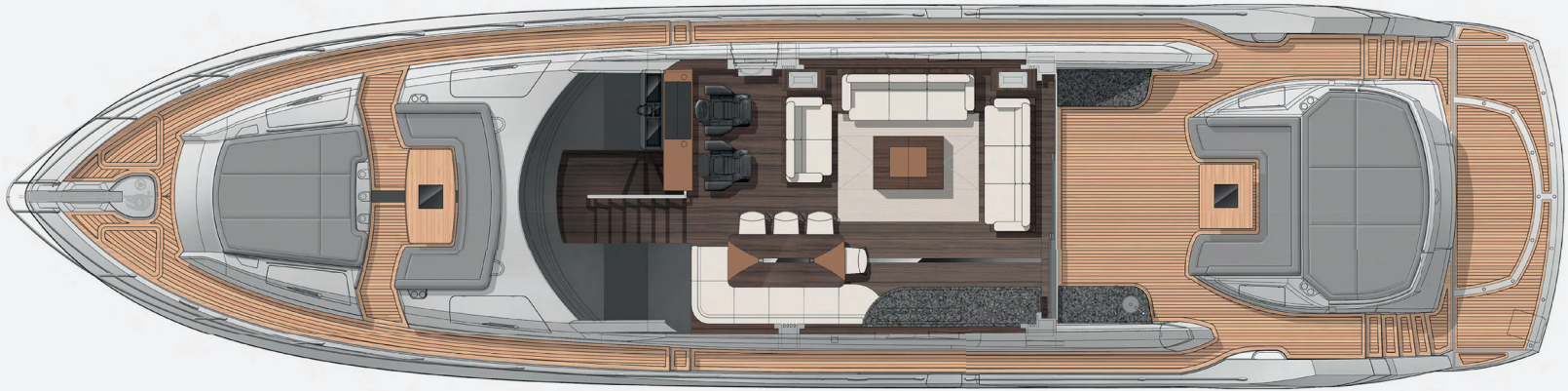
PREDATOR 80



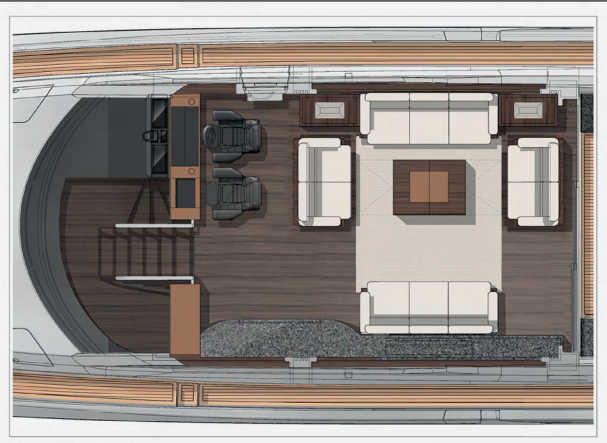
SIDE PROFILE



EXTERIOR PLAN



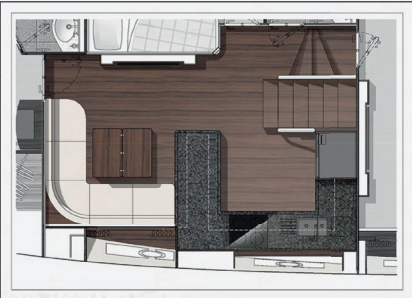
MAIN DECK



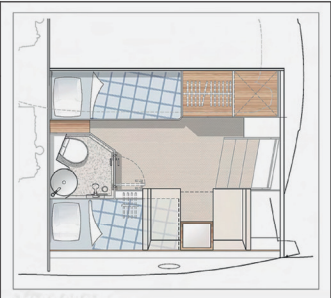
MAIN DECK OPTION
Occasional dining arrangement



PULLMAN OPTION
Shown with enlarged galley arrangement



LOWER SALOON OPTION
Shown with enlarged galley arrangement



CREW OPTION
Occasional mess arrangement



LOWER DECK

STANDARD SPECIFICATIONS

127

STANDARD
SPECIFICATIONS...CONTINUED

19 Crew Mess/Cabin

Altro Safety flooring
Twin fixed Pullman bunk berths
Foam mattresses for berths
Reading lights 24v
Air conditioning
Wardrobe
LED overhead lighting (24v)
1 x double AC socket
1 x telephone point
CD/radio with two speakers
Opening porthole with mosquito screen
and curtains
Door to crew mess
Washer/dryer fitted under outboard bunk

20 Crew Toilet and Shower

Toilet 24v
Washbasin
Shower cubicle
Mirror
Vanity unit
LED overhead lighting (24v)
Shaver socket 240/110v
Door to crew mess

21 Engine Compartment and Ancillaries

Soundproofing throughout
Fuel filters/water separators to engines
Fuel filters/water separators to generators
Automatic bilge and flood pumps with
high-level alarms
Generator exhaust silencers and water separators
Engine exhaust dry risers and water injection
Strainers to all raw water inlets
Bow thruster hydraulic control unit
Power steering – hydraulic control steering
Garage door and trim tabs hydraulic control unit
Lifting platform hydraulic control unit
Air intakes fitted with mist eliminator system &
emergency shutdown flaps
(automatically operated)
Air extraction fans (AC) fitted with butterfly
shutdown dampers
Exhaust gas temperature sensor
Fluorescent lights (AC)

Engine room fire extinguishing system (FM200)
1 x AC 220v Socket
1 x DC 24v Socket
Power management system panel
Portable CO₂ fire extinguisher
Inspection lamp

22 Underwater Gear

Bow thruster – hydraulic engine driven
Seawater strainers – nickel plated bronze
Full cathodic bonding system to zinc anodes
Hydraulic trim tabs – stainless steel
Propeller shafts
High-performance rudders – AB2 nickel
aluminium bronze
P-brackets – AB2 nickel aluminium bronze
c/w water lubricated bearing
Self-aligning shaft seal including spare seal
5-blade NAB bronze propellers

23 Fuel System

Fuel level indication – displayed at main helm
Accurate fuel monitoring via tank volume computer
with digital bar-graph display at main helm
Fuel piping (engine room) – press fit type stainless
steel & zinc-plated steel with
Parker high temperature rubber hose (single wire
reinforcement) for short lengths
Fuel piping (all areas outside the engine room) ISO
7840 fuel hose except fuel transfer line
Emergency fuel shut-off valves to main engines and
generators – located on tank
hatch. Valves remotely operated and actuated from
the fire control locker with local manual override

24 Systems

Euro spec only: 2 x 27kW @ 50Hz slow speed
Kohler generators with underwater
silent exhaust and sound box
USA spec only: 2 x 27.5kW @ 60Hz slow speed
Kohler generators with underwater
silent exhaust and sound box
Galvanic isolator
Semi-automatic AC power management system
24v and 12v DC electrical system with full
circuit breaker protection

8 x engine batteries 24v circuit
6 x domestic batteries 24v circuit
Alternator split charging system
Remote battery switches controlled from aft
cockpit locker

1 x 95 amp battery charger for 24v circuits
Immersion heater for calorifier
AC sockets throughout the boat
Hydraulic power steering
Electric toilet system with integral macerator (24v)
with two-switch control
Toilets discharging overboard or to black
water tank
Black water tank discharging to dockside
or overboard
Aluminium fresh water tank with electric
sending unit
Fuel tank with electric sending unit
Water pressure system (24v)
Electric seamless transfer for AV system
Washbasins, showers and air conditioning fan coils
to drain to grey water tank
Grey water tank discharging overboard
Chilled water air conditioning system
(reverse cycle) AC
Bilge pumping system (24v)
Manual/automatic fire extinguishing system
combined with engines, generators and
fans shutdown
Auxiliary hydraulics for trim tabs and
platform (24v)

25 Miscellaneous

1 x set of towels per person
8 x large fenders with ties
6 x 15m black docking lines
1 x 10m black docking line
Mosquito screens for all openable portlights
Ensign staff
First aid kit
Owner's manuals
Engine manuals
Manual winch handle
Ship's document cases



AWARDS AND ACHIEVEMENTS

2015

ASIA BOATING AWARDS
Best Brand Presence

2014

WORLD YACHT TROPHIES
101 Sport Yacht – ‘Best Exterior Design’

ASIA BOATING AWARDS
Predator 80 – Best Worldwide Production Motoryacht 15M–24M

WORLD SUPERYACHT AWARDS
40 Metre Yacht ‘Sea Raider V’ – Finalist

2013

ASIA BOATING AWARDS
Best Brand Presence

MOTOR BOAT OF THE YEAR AWARD
28 Metre Yacht – ‘Best Custom Yacht’

2012

MOTORBOAT & YACHTING AWARDS
Manhattan 63 – ‘Best Flybridge above 55ft’

ROBB REPORT CHINA
‘Best of the Best’ 28 Metre Yacht

ASIA BOATING AWARDS
28 Metre Yacht – Best Production Motoryacht 24M–40M

WORLD SUPERYACHT AWARDS
Predator 130 ‘Never Say Never’ – Finalist

2011

ASIA BOAT AWARDS
Best Brand Presence in Asia

EUROPEAN CEO CORPORATE LIFESTYLE AWARDS
Best Luxury Brand

SHOWBOATS DESIGN AWARDS FLORIDA
Naval Architecture Motoryacht ‘Evil Zana’ Predator 130

2010

WORLD SUPERYACHT AWARDS
Predator 130 ‘Evil Zana’ – Finalist

QUINTESENTIALLY AWARDS
Yacht Charter of the Year

SYDNEY BOAT SHOW
Boating Industry Association of NSW – Best Marina Display

SYDNEY BOAT SHOW
Boating Industry Association of NSW – Best Overall Display

ASIA BOATING AWARDS
Predator 60 – Best Production Motoryacht 51 to 80 feet

2009

SYDNEY BOAT SHOW
Display of Excellence

CROATIA BOAT SHOW
Predator 92 Sport – Best in Class

CROATIA BOAT SHOW
30 Metre Yacht – Best in Class

CROATIA BOAT SHOW
Best Boat Show Stand

2008

UK MOTOR BOAT OF THE YEAR AWARDS
Manhattan 60

2007

EUROPEAN POWERBOAT OF THE YEAR
Superhawk 43

ASIA PACIFIC BOATING AWARDS
90 Yacht, Best of the Best

MODERN BOATING MAGAZINE
Portofino 47, Imported Powerboat of the Year

AUSTRALIAN MARINE INDUSTRIES FEDERATION AWARDS
Predator 62, Imported Powerboat of the Year

NOMINATED BY THE SUPERYACHT SOCIETY
37 Metre Yacht ‘The Snapper’

QUEEN’S AWARD FOR ENTERPRISE
International Trade

ROBERT BRAITHWAITE IS HONOURED WITH CBE
The Queen’s Birthday Honours List

2006

NOMINATED FOR THREE SUPERYACHT AWARDS
Predator 108 ‘SHIVER’

2005

AUSTRALIAN MARINE INDUSTRIES FEDERATION AWARDS
75 Yacht, Non-Trailable Boat Award

AUSTRALIAN MARINE INDUSTRIES FEDERATION AWARDS
Portofino 46, Commendation

MODERN BOATING, POWER BOAT OF THE YEAR AWARDS
Predator 68, Imported Powerboat of the Year

BOATS.COM MARINE INDUSTRY WEB AWARDS
Manufacturers Category for www.sunseeker.com

2004

SYDNEY BOAT SHOW
Best Overall Display

SYDNEY BOAT SHOW
Best Marina Display

2003

AUSTRALIAN MARINE AWARDS
Manhattan 56, Award for Excellence

AUSTRALIAN MARINE AWARDS
Predator 68, Best Imported Non-Trailable Yacht

2002

ENTREPRENEUR OF THE YEAR AWARD
Robert Braithwaite MBE

2001

BEST POWER DESIGN AWARD
105 Yacht, The Superyacht Society

BEST POWER INTERIOR AWARD
105 Yacht, The Superyacht Society

PRESIDENT’S AWARD
Southern California Marine Association

2000

QUEEN’S AWARD FOR ENTERPRISE
Continuous Innovation and Development

THE TIMES EXPORTER OF THE YEAR
Times Export Awards

ROBB REPORT AWARD
Best of the Best, Boating and Sailing

1999

ROBB REPORT AWARD
Best of the Best, Boating and Sailing

MOTORBOAT OF THE YEAR
Predator 75, BT British Nautical Awards

1998

SUPERYACHT DESIGN AWARD
Manhattan 74, Superyacht Design Awards

EDITOR IN CHIEF AWARDS
Yachts Magazine

1997

LIFETIME ACHIEVEMENT AWARD
Robert Braithwaite MBE, RYA Awards

1996

MOTORCRUISER OF THE YEAR AWARD
RYA British Nautical Awards

EXPORTER OF THE YEAR AWARD
DCCI Export Awards

1995

BOAT BUILDER OF THE YEAR AWARD
RYA/BMIF British Nautical Awards

1994

QUEEN’S AWARD FOR EXPORT ACHIEVEMENT
Queen’s Awards for Industry

1992

BEST IN THE WORLD AWARD
Renegade 60, Boating Magazine

ROBERT BRAITHWAITE IS HONOURED
WITH MBE

The Queen’s Birthday Honours List

1990

EXPORTER OF THE YEAR
SW International Business Awards

1989

QUEEN’S AWARD FOR EXPORT ACHIEVEMENT
Queen’s Awards for Industry

1987

QUEEN’S AWARD FOR EXPORT ACHIEVEMENT
Queen’s Awards for Industry

ACKNOWLEDGEMENTS

PHOTOGRAPHERS:

Tom Benson
Quin Bisset
Martin Brent
Jeff Brown
Andy Cahill
Gary Castle
Joe McCarthy
Ian Winstanley

CLOTHING & ACCESSORIES:

Roja Dove
Hansgrohe
Haviland
Heirlooms
Jo Malone
Milena M.
Tresor Paris
Porta Romana
SEABOB
Itsomi Sotogrande
Williams Jet Tenders

