

maxi
open
means
mangusta

open
your
imagination











performance
and
comfort









timeless
contemporary
interior design







brand
new
technology

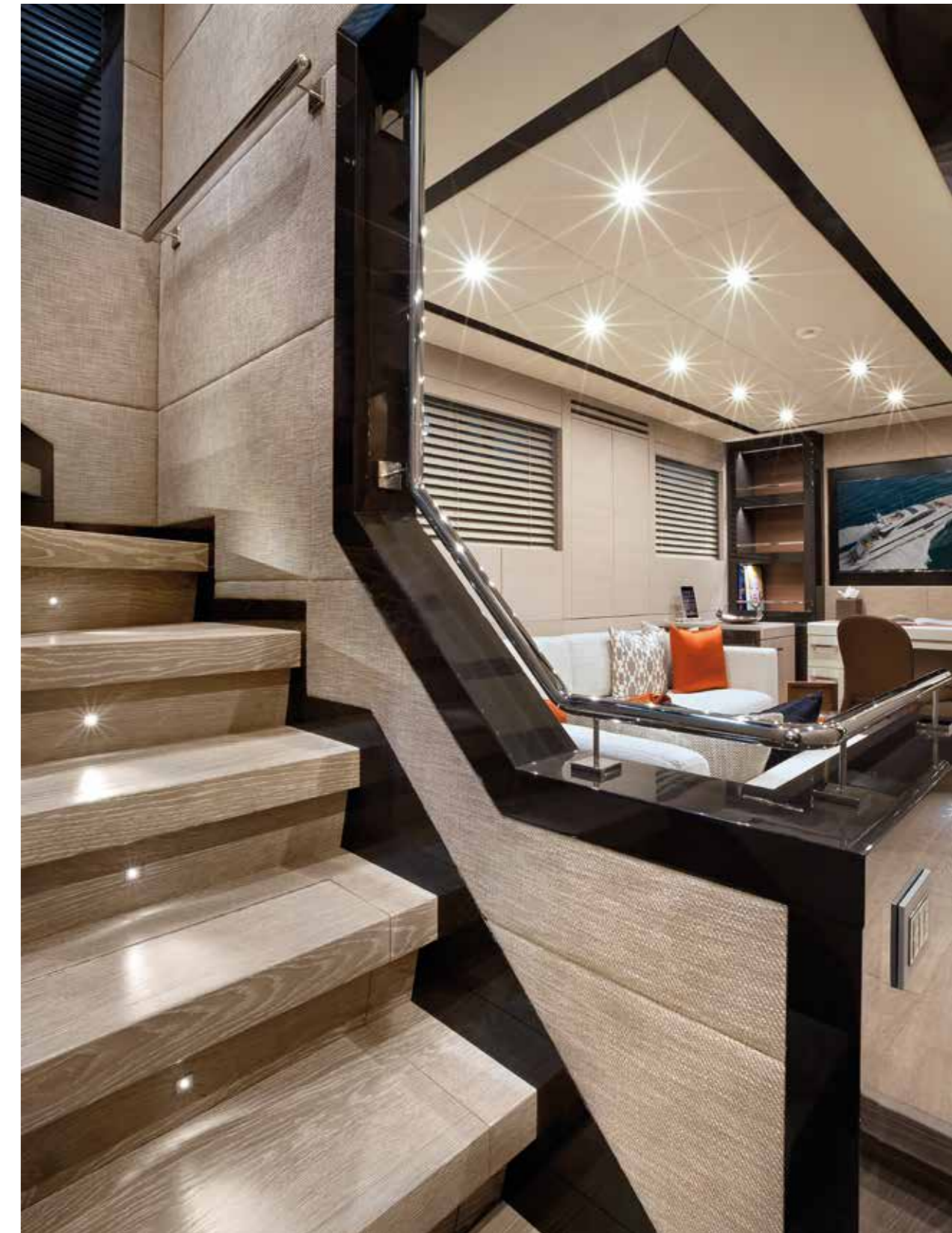






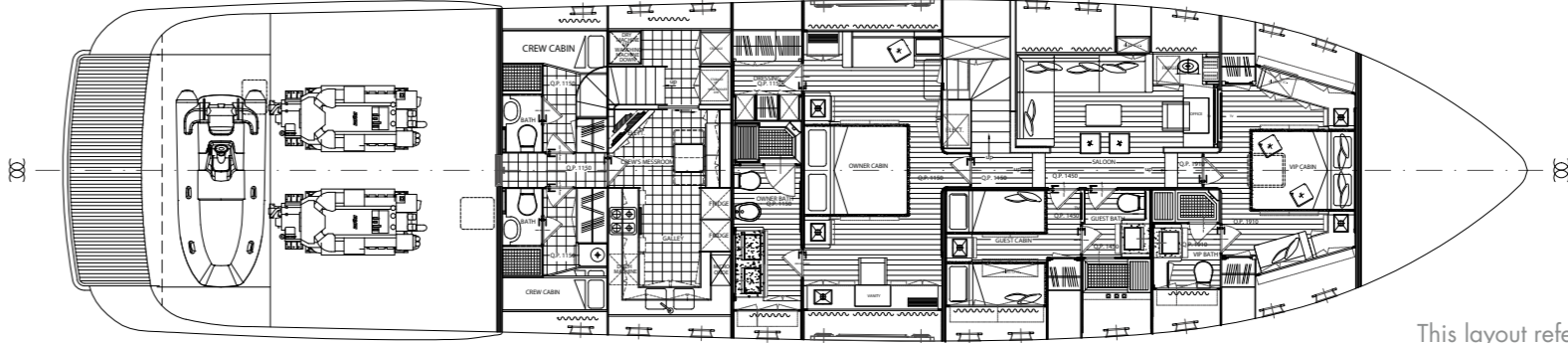
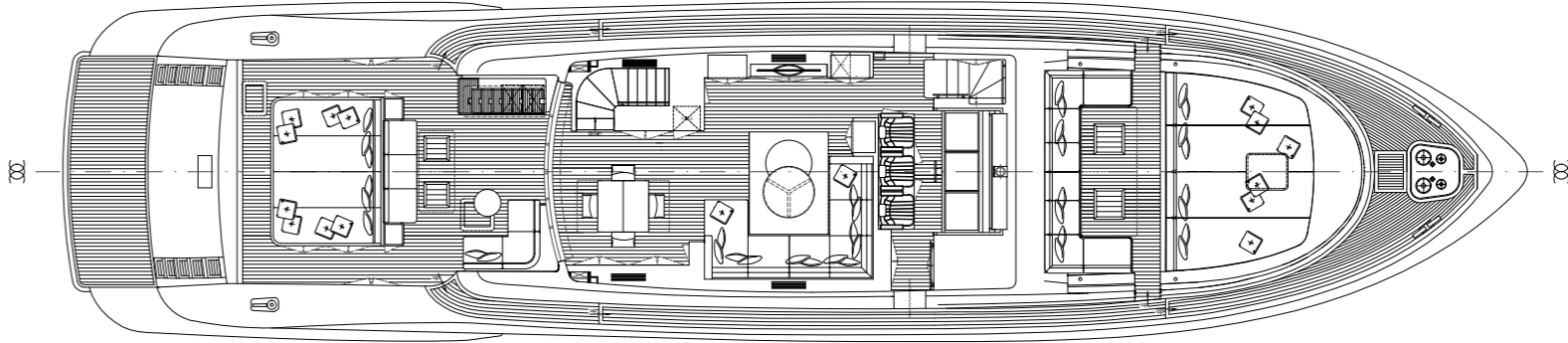
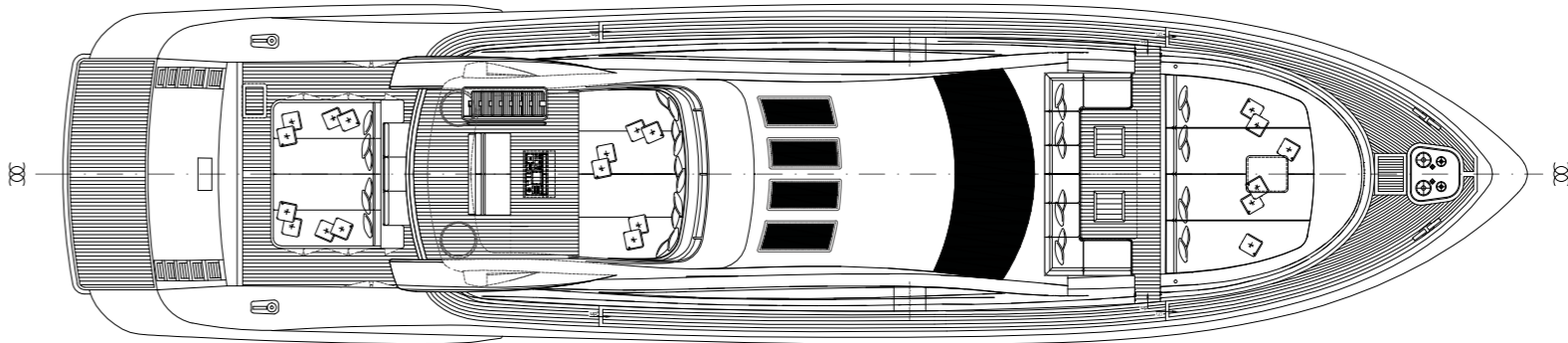
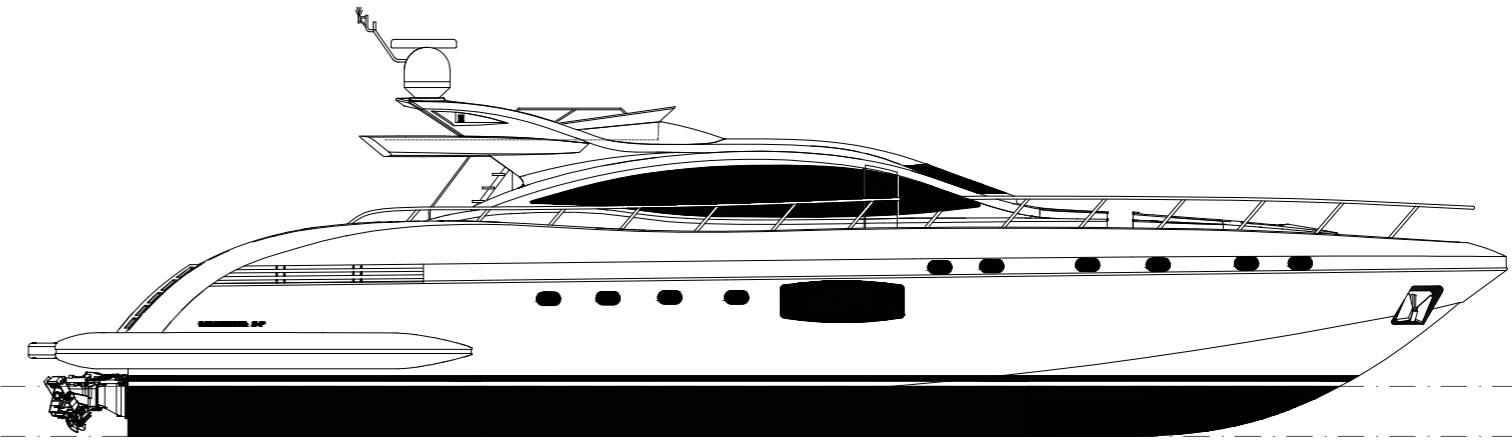
excellent
on-board
comfort
and complete
privacy











This layout refers to the standard version of the yacht.

Mangusta 94

technical specifications

DIMENSIONS

LENGTH OVERALL	94.23 FT / 28.72 M
BEAM	~ 21.65 FT / 6.6 M
MAX DRAFT	~ 5.25 FT / ~ 1.6 M
DISPLACEMENT AT FULL LOAD	~ 202823 LBS / ~ 92 T

TANK CAPACITY

FUEL CAPACITY	~ 2325 US GALS / ~ 8800 L
WATER CAPACITY	~ 370 US GALS / ~ 1400 L

PROPULSION

MAIN ENGINES POWER	2 X MTU 16V 2000 M94 2600 HP EACH
TRANSMISSION	KAMEWA 2 X 56 S3
STABILIZERS	1 X SEAKEEPER 16 + 1 X SEAKEEPER 5 FOR ZERO SPEED AND UNDERWAY

PERFORMANCE

MAX SPEED HALF LOAD	~ 36 KNOTS
RANGE AT ECONOMICAL CRUISING SPEED	~ 280 NAUTICAL MILES

DESIGNERS

EXTERIORS	OVERMARINE GROUP / STEFANO RIGHINI
INTERIORS	OVERMARINE GROUP DESIGN DEPARTMENT



MAXI OPEN YACHTS: MANGUSTA 72|80|**94**|105|110|132|165|215
FAST DISPLACEMENT YACHTS: MANGUSTA GRANSFORT 50
LONG RANGE YACHTS: MANGUSTA OCEANO 42|46|55

VIA DEL PORTO, 2 - 55049 VIAREGGIO (LU) - ITALY - TEL. +39 0584 389364 - INFO@OVERMARINE.IT - WWW.OVERMARINE.IT

All information contained herein, such as technical and performance data, technical layouts, images and graphic reproductions are purely indicative.
All technical and/or descriptive references only refer to the features of the yacht purchased and depicted in the brochure.
Consequently any binding information which is the seller's responsibility will be specified exclusively in the sales act and specific manual.

concept & design fascettiassociati.it

