



# TARGA 53 GT

We're going places. Join us.





## EVERY DETAIL SAYS 'ENJOY ME' – EVERY SPACE SAYS 'BE ENTERTAINED'

---

You've stocked the provisions, chosen a bay to explore and your guests are on board. The muscular power and grace of the Targa 53 GT awaits to take you all on an exhilarating journey.

From the visual impact of its bold and beautiful design, the Targa 53 GT has been carefully considered with uninterrupted freedom in mind. Every detail of the interior is thoughtfully created for maximum space, light and enjoyment.

Expert engineering gives exceptional handling, with a top speed in excess of 30 knots. Your party can relax on the open-plan main deck, with its spacious cockpit and luxuriously appointed saloon, sleep soundly in the spacious cabins below, or shower down after a swim – all in perfect harmony.

# INTUITIVELY READY FOR EVERY JOURNEY

---

From the generous layout to the power of the engines, the Targa 53 GT has every little detail covered for enjoyable explorations on the high seas.

## Specification highlights

- Multiple layout options to suit your requirements
- Cockpit seating with sunbed conversion
- 40" LCD television to saloon
- Teak cockpit floor
- Powered hardtop

## Optional equipment highlights

- Proportional electronic bow and stern thrusters
- Integrated, powered canopy over aft sun bed
- Marble features with leather inlays to interior
- Seakeeper® 6 gyroscopic stabiliser









THE TARGA 53 GT GRACEFULLY  
PROVIDES EVERYTHING FOR  
THE PERFECT ADVENTURE













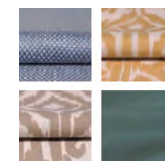




# THE CHOICE OF INTERIOR IS EQUALLY EXTENSIVE

In the spirit of building the perfect yacht at every possible level, we have also carefully created four different interior design schemes for you to choose from:

## Amalfi



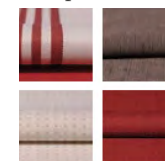
Inspired by Liguria's local architecture, this scheme exudes the sunny warmth synonymous with fragrant Italian lemon trees and the umbrella-lined shores of the Amalfi Coast.

## Capri



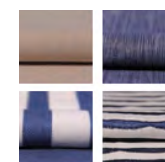
Understated, earthy colours, effortlessly combined with rich natural textures. All the hallmarks of an interior design collection that is as gentle as the Mediterranean breeze.

## Hamptons



Evoking elegant vintage design cues, whilst offering a bold and contemporary interpretation of the luxury that was once the preserve of America's East Coast.

## St. Tropez



An ode to the sea where all manner of deep, oceanic blues tastefully swirl with muted greys, delicate creams and classic nautical motifs.





# PROPORTIONS BALANCED FOR MAXIMUM SPACE

## Principal Dimensions

Length overall (exc. pulpit)	53'6" (16.32m)
Beam (inc. gunwale)	14'10" (4.52m)
Draught	3'11" (1.20m) unloaded
Height above waterline	15'1" (4.60m)
Transport height	15'11" (4.87m)
Dry weight (approx.)	19.19 imp. tons/21.49 US tons (19,500kg)
Fuel capacity	530 gallons/637 US gallons (2,412 litres)
Water capacity (inc. calorifier)	120 gallons/145 US gallons (550 litres)
Sleeps	6 – 9
Classification	CE Category B
Capacity	16 persons



## Engines and Performance

2 x Volvo Penta D11-725 shaft drive, diesel (1450hp): 32 knots



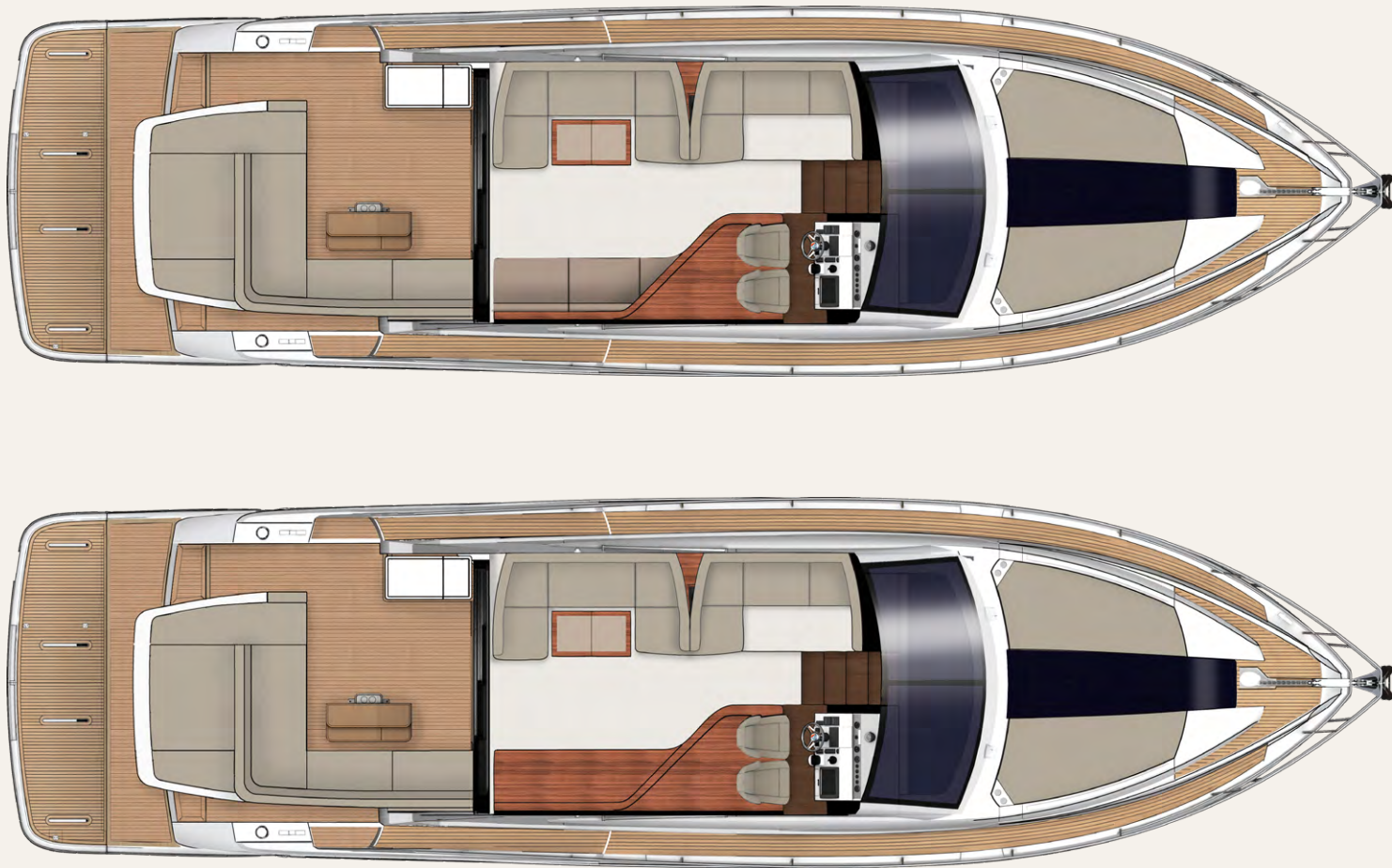
## TARGA 53 GT MAIN DECK



Galley up (option)

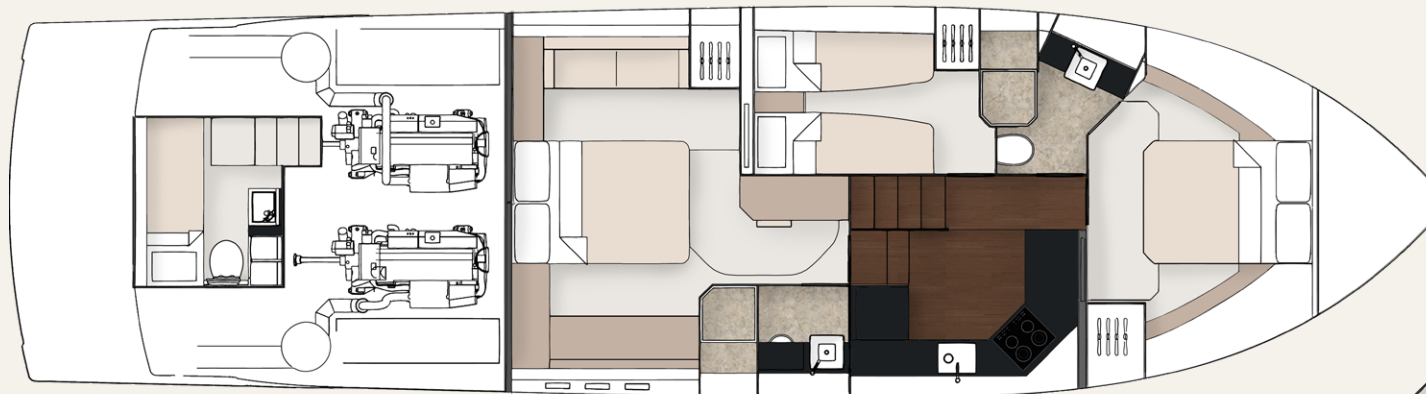


## TARGA 53 GT MAIN DECK

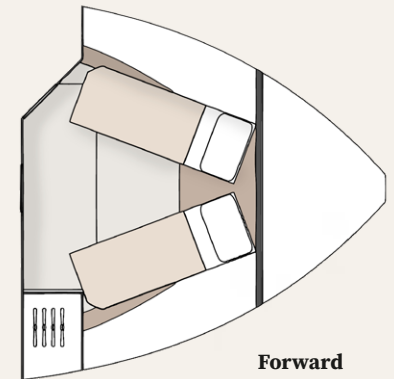




## TARGA 53 GT LOWER DECK



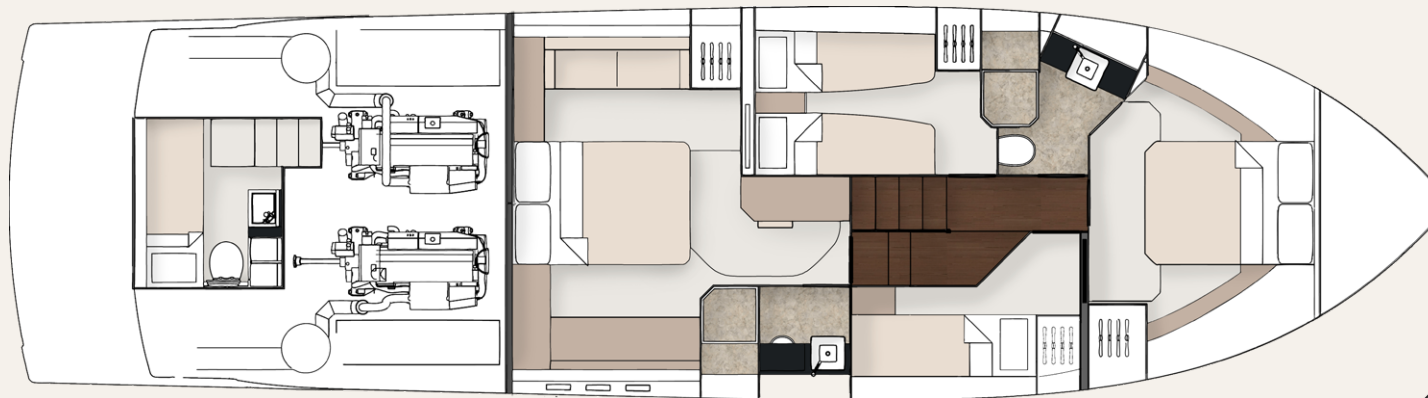
**3 Cabin**



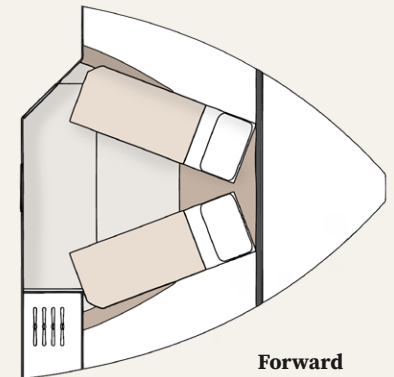
**Forward  
cabin scissor  
berth option**



## TARGA 53 GT LOWER DECK



**4 Cabin**



**Forward  
cabin scissor  
berth option**





## JOIN THE FAIRLINE FAMILY.

Visit **fairline.com** and start to see a world of possibilities.

Come to us for adventure. Come to us for design and heritage. And come to us for forward thinking. But most of all, come and experience our acclaimed Dealership network.

Each Appointed Fairline Dealer is a professional, thriving business, working with your best interests at heart and using their intimate local knowledge to your advantage. Yes, they will provide you with a trusted service, but also friendship and care beyond the call of duty.



Fairline Argentina  
Fairline Australia  
Fairline Baltic  
Fairline Benelux & West Germany  
Fairline Beirut  
Fairline Brazil  
Fairline Channel Islands  
Fairline Chesapeake  
Fairline Colombia  
Fairline Côte d'Azur  
Fairline Croatia

Fairline Cyprus  
Fairline Denia  
Fairline Eastbourne  
Fairline Eastern Canada  
Fairline Egypt  
Fairline Empuriabrava  
Fairline Finland  
Fairline Florida  
Fairline Great Lakes  
Fairline Greece  
Fairline Hong Kong

Fairline Ibiza  
Fairline India  
Fairline Israel  
Fairline Italy  
Fairline Korea  
Fairline London  
Fairline Maldives  
Fairline Mallorca  
Fairline Malta  
Fairline Menorca  
Fairline Mexico

Fairline Middle East  
Fairline Monaco  
Fairline New York  
Fairline New Zealand  
Fairline Northwest  
Fairline Norway  
Fairline Philippines  
Fairline Poland  
Fairline Poole  
Fairline Portugal  
Fairline Russia

Fairline Singapore  
Fairline South China  
Fairline South Germany & Austria  
Fairline Southampton  
Fairline Southern Spain  
Fairline Sweden  
Fairline Switzerland  
Fairline Thailand  
Fairline Turkey  
Fairline Ukraine

© FAIRLINE YACHTS LTD 2020. ALL RIGHTS RESERVED. FAIRLINE AND TARGA ARE REGISTERED TRADEMARKS OF FAIRLINE YACHTS LTD. TOGETHER WITH ALL TEXT AND IMAGES CONTAINED IN THIS PUBLISHED MATERIAL, THEY ARE PROTECTED BY COPYRIGHT AND MAY NOT BE PRODUCED IN ANY FORM WITHOUT THE EXPRESS WRITTEN PERMISSION OF THE COPYRIGHT OWNERS. Published by Fairline Yachts Ltd, Oundle, PE8 4HN, England. Fairline Yachts constantly seek ways of improving specifications, design and production. Therefore, alterations take place on a continuous basis. Whilst every effort is made to produce up-to-date literature, the descriptions, specifications, illustrations and photographs in this brochure should not be regarded as a definitive guide to current specifications, nor does it constitute an offer for the sale of any particular boat. Performance estimates are given in good faith, but are in no way guaranteed for any particular boat. Dirt on the bottom of the boat, damage to propellers, engine tuning, external water and air temperatures and the weight of crew, fuel and water carried can all adversely affect performance. For these and other reasons we can give no performance guarantees.