



D Y N A M I Q

GLOBAL SERIES

G 380

ENGINEERED FOR CRUISING PLEASURE.

G 380

The Global 380 is the only steel-hulled explorer designed for world cruising in high motion comfort with minimal noise and vibrations. Measuring 38 metres (125') overall the yacht has an impressive volume of 400 gross tons. Stand-out features include a class-leading master suite that has two fixed balconies on the main deck, a very large wheelhouse with panoramic views, a beach club complete with sauna, an enormous sundeck and go-anywhere range at cruising speed of 4,500 nm. Built on Dynamiq's EPIQ* platform, her contemporary exterior lines reflect the yacht's modern engineering that includes a pitch-damping Hull Vane for increased efficiency and comfort. The Global 380 is the complete superyacht explorer that leaves nothing to chance.



* Efficiency, Performance, Innovation, Quality



G 380



CARRARA WHITE / BROWN SUGAR METALLIC



KEY FEATURES

G 380



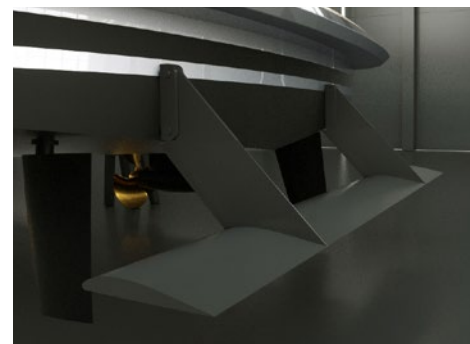
Steel and aluminium round bilge fast displacement hull

Drawn by the famous Dutch naval architects Van Oossanen, the G 380 unique hull features a round-bilge shape for remarkably low resistance and low fuel consumption, while still being capable of high speeds. The design decreases vertical accelerations in the hull, which translates into a far more comfortable motion when sailing. The avant-garde bow shape with a vertical stem maximises the waterline length, enhancing performance even more. To keep spray levels low, an integrated spray rail deflects water hitting the bow area. Built entirely from steel and marine grade aluminium, the G 380 hull guarantees unparalleled comfort and safe operation for more than 25 years.



Curved fin stabilizers by Side Power

Vector Fins stabilisers dramatically reduce roll as well as undesired yaw and sway motions caused by active fins. Their vertical concave shape creates a net force direction, both in cruising and at-anchor modes, so the work is more up-down instead of side-to-side. By changing the net force angle, this also increases the leverage arm around the boat's rolling point, further increasing the physical forces that work on the boat to reduce roll. This provides more efficient stabilisation per fin size, which means that drag and power consumption are a lot less than with other fins offering comparable roll reduction.



Hull Vane®

The Hull Vane® is a patented fixed foil located below the stern of a ship. Developed by renowned Dutch naval architects Van Oossanen it influences the stern wave pattern and creates hydrodynamic lift, which is partially oriented forward. This innovation leads to significant reduction of the hull's resistance, which in turn enables the installation of much smaller engines, fuel savings and longer range. The Hull Vane® also improves stability under way and at anchor, while reducing both pitching and yawing motions.



XIR glass

The G 380 features next-generation laminated XIR glass that allows maximum light transmission, while keeping solar heat gain at bay. Harmful UV rays are almost completely blocked, and heat transmission reduced by 60%. The result is an interior that offers the wide panoramas of large windows without the penalty of heat build-up. This means significantly reduced air-conditioning loads and therefore lower running costs. The glass manufacturer is Isoclima, an Italian high-tech company that also supplies glass for luxury automobiles such as Bentley, McLaren, Mercedes and BMW.



KEY FEATURES

G 380



Transatlantic range of 4,500 nm
@ 10 knots



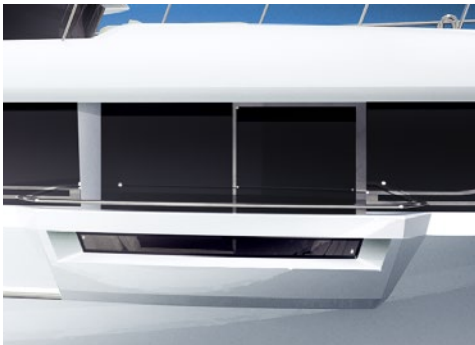
Fun Air inflatable pool, 5 x 6 meters
(16' 5" x 19' 8")



Beach club with sauna



Interior volume of 400 gross tons



Owner's stateroom with two fixed balconies



High-end audio by
Bowers & Wilkins



Japanese Teppanyaki on sundeck



Main saloon fireplace



G 380

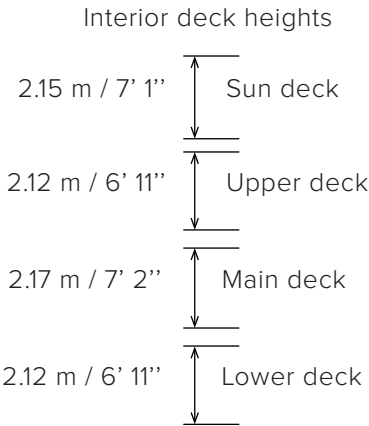


CARRARA WHITE / WHISPER GREEN METALLIC



MAIN SPEC

G 380



Length overall:	38 m / 125'
Beam:	8.5 m / 27' 10"
Draft:	2.4 m / 7' 10"
Material:	Steel / aluminium
Hull type:	Round bilge, fast displacement
Tonnage:	400 GT

Main engines:	2x MAN V8-1000, 735 kW
Generators:	2x 70 kW, Kohler
Stabilisers:	2x Side Power fins, zero-speed fuction
Max speed:	15 knots
Range:	4,500 nm @ 10 knots 6,500 nm @ 8 knots

Fuel:	53,000 l / 14,000 US gallons
Fresh Water:	10,000 l / 2,642 US gallons
Grey and Black:	5,000 l / 1,320 US gallons

Guests:	11 in 5 cabins
Crew:	7 in 4 cabins

Class:	RINA commercial, unrestricted range
Notations:	RINA Comfort Class, RINA Green Star (option)

Naval architecture:	Van Oossanen
Exterior design:	Dobroserdov Design
Interior design:	Giuseppina Arena / Dynamiq



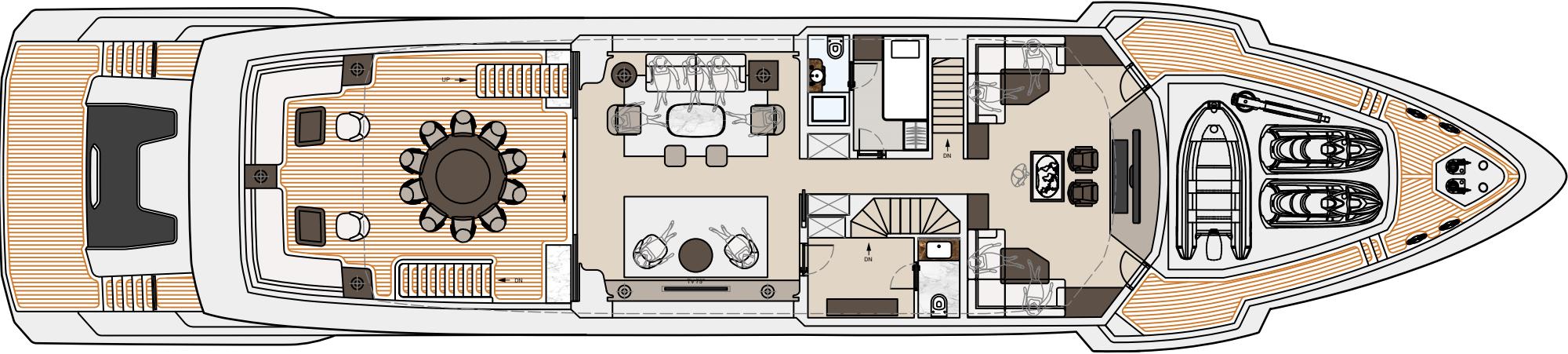
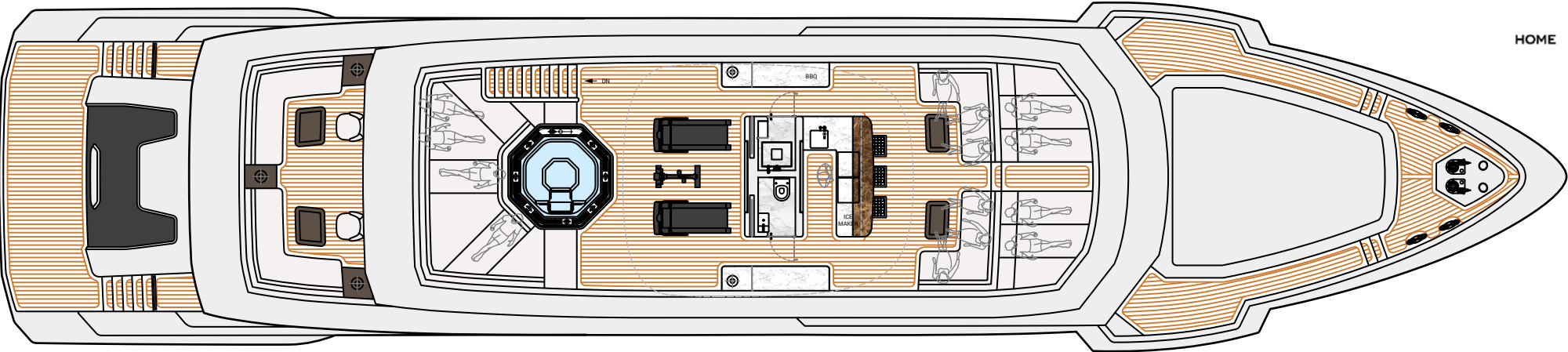
DECK PLANS

G 380



BENTLEY

HOME



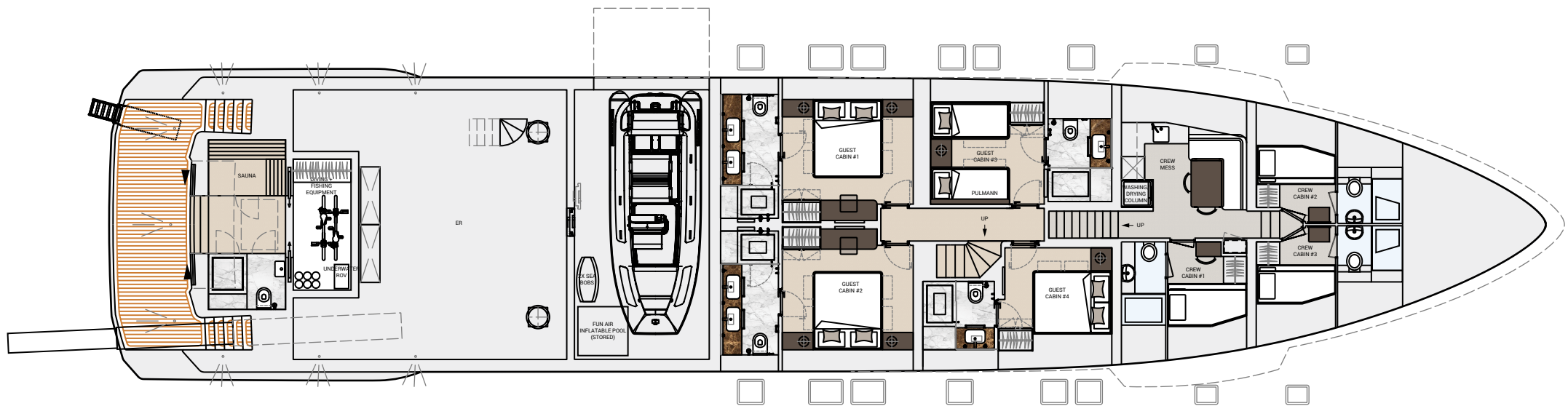
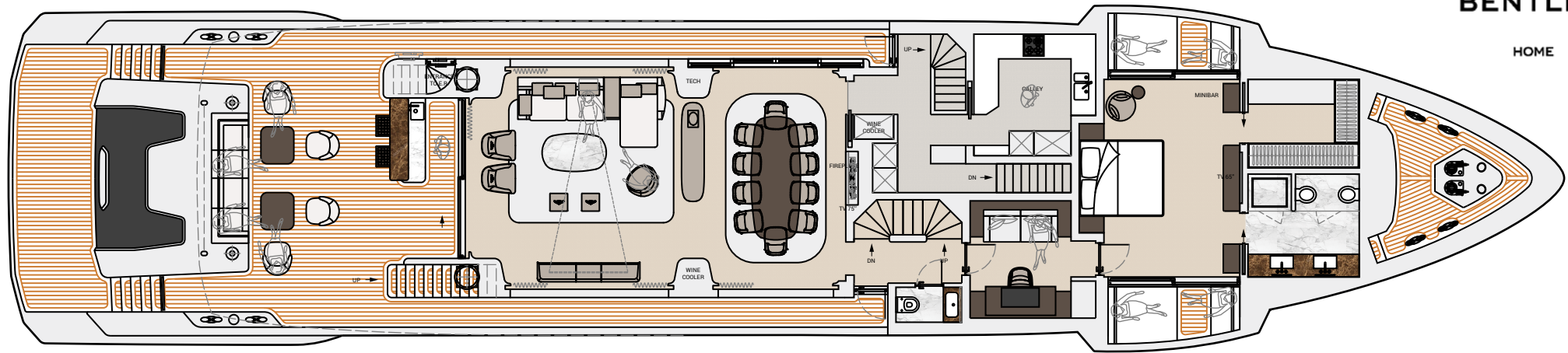
DECK PLANS

G 380



BENTLEY

HOME



This drawing is the property of Dynamiq Yachts SARL and is not to be modified, used or reproduced in whole or part without written permission.



G 330



CARRARA WHITE / METEOR GRAY METALLIC



G 380



BENTLEY

HOME



G 380



BENTLEY

HOME



G 380



BENTLEY

HOME



G 380



BENTLEY

HOME



G 380



BENTLEY

HOME



PRICE, OPTIONS & PAYMENT TERMS

G 380

BASE PRICE*: € 18,600,000

OPTIONS:

<input type="checkbox"/> Silent package (extra insulation, double glass portholes)	€ 125,000
<input type="checkbox"/> Hull Vane	€ 117,000
<input type="checkbox"/> Bentley package (metallic paint, furniture, lights and carpets set)	€ 435,000
<input type="checkbox"/> Bowers & Wilkins high-end package	€ 39,000
<input type="checkbox"/> Heated bathroom floors	€ 17,500
<input type="checkbox"/> Fine marbles in luxury areas	€ 49,000
<input type="checkbox"/> Bed linen, bath and deck towels by Frette	€ 45,000
<input type="checkbox"/> Interior scent diffusion	€ 4,500
<input type="checkbox"/> Sundeck cinema	€ 19,000
<input type="checkbox"/> Crew call buttons	€ 8,000
<input type="checkbox"/> Miele electric BBQ on sundeck	€ 3,500
<input type="checkbox"/> Ice dispenser and fridge on sun deck bar	€ 8,000
<input type="checkbox"/> 2 x Miele wine coolers on sundeck	€ 9,000
<input type="checkbox"/> Forward sofa on main deck	€ 9,100
<input type="checkbox"/> Panasonic bow camera	€ 4,500
<input type="checkbox"/> 7 Underwater lights	€ 17,500
<input type="checkbox"/> VSAT Intellian V60	€ 35,000
<input type="checkbox"/> "All weather" package for main and sun deck (IR heating)	€ 14,500

PAYMENT TERMS:

1st year

Contract signature	20%
Keel laying	20%
Main engines at the yard	25%

2nd year

Interior installation start	20%
Launch	10%
Delivery	5%

BUILD TIME:

28 months

* More options are available at bedynamiq.com



G 380



CARRARA WHITE / BRIGHT ATLANTIC BLUE METALLIC



THE SHIPYARD

Dynamiq is a private shipyard founded in 2014 and owned by yacht broker and designer Sergei Dobroserdov. His main strategy with Dynamiq was to create a well-organised and owner/broker-friendly facility where clients and their reps can enjoy a creative and transparent construction process.

Dynamiq is the only shipyard in Italy building yachts to North European standards that are 100% created by leading naval architects and structural or mechanical engineering companies in the Netherlands. Dynamiq production is located in the picturesque area of Massa on Italy's Tuscan coast. This modern and high-tech facility is fitted out for building the full range of Dynamiq superyachts up to 50 metres in length with various powertrain options, including hybrid technology. The Dynamiq Yachts production facility offers the highest standards of working environment and quality control.

Come to Dynamiq if you want:

1. Original contemporary design;
2. Top-quality full-aluminum construction;
3. Complete Dutch engineering with naval architecture by Van Oossanen;
4. Top-class contractors and leading brand partners from interior design to high-end audio-visual;
5. Competitive Italian prices.

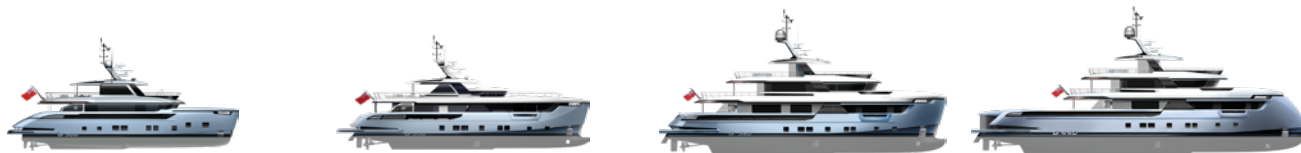


DYNAMIQ RANGE

GRAN TOURISMO TRANSATLANTIC MODELS



GLOBAL MODELS



Model	GTT 115	GTT 135	GTT 160	GTT 165	G 300	G 350	G 380	G 440
LOA	35.5 m / 115’	41 m / 135’	49.5 m / 162’	50 m / 165’	30.5 m / 100’	34.7 m / 114’	38 m / 125’	44 m / 144’
Beam	7.1 m / 23’ 3’’	8.2 m / 26’ 11’’	8.7 m / 28’ 6’’	8.5 m / 27’ 10’’	7.5 m / 24’ 7’’	8.5 m / 27’ 10’’	8.5 m / 27’ 10’’	9.2 m / 30’ 2’’
Draft	1.45 m / 4’ 9’’	1.8 m / 5’ 11’’	2 m / 6’ 6’’	2 m / 6’ 6’’	1.45 m / 4’ 9’’	1.8 m / 5’ 3’’	2.4 m / 7’ 10’’	2 m / 6’ 6’’
Max speed	21 knots	21 knots	17 knots	20 knots	19 knots	16 knots	15 knots	17 knots
Range	3,400 nm @ 10 knots	3,000 nm @ 12 knots	4,000 nm @ 10 knots	4,000 nm @ 12 knots	3,000 nm @ 10 knots	3,100 nm @ 10 knots	4,500 nm @ 10 knots	5,000 nm @ 10 knots
Engines	2x MAN, 1,213 kW	2x MAN, 1,213 kW	2x MAN i6, 537 kW	2x MTU 8V, 932 kW	2x MAN, 882 kW	2x MAN, 882 kW	2x MAN, 735 kW	2x MAN, 882 kW
Hull / superstructure	Aluminium, 5083	Aluminium, 5083	Aluminium, 5083	Aluminium, 5083	Aluminium, 5083	Aluminium, 5083	Steel / Aluminium	Aluminium, 5083
Tonnage	199 GT	299 GT	399 GT	450 GT	200 GT	299 GT	400 GT	499 GT
Guests	10 in 5 cabins	11 in 5 cabins	12 in 6 cabins	10 in 5 cabins	10 in 4 cabins	10 in 5 cabins	10 in 5 cabins	10 in 5 cabins
Crew	6 in 3 cabins	6 in 3 cabins	8 in 4 cabins	9 in 5 cabins	4 in 2 cabins	6 in 3 cabins	7 in 4 cabins	7 in 4 cabins
Build time	16 months	16 months	24 months	28 months	22 months	22 months	28 months	28 months
Price	starting at 12 500 000 €	starting at 16 500 000 €	starting at 19 900 000 €	starting at 24 750 000 €	starting at 9 150 000 €	starting at 13 500 000 €	starting at 18 600 000 €	starting at 23 500 000 €






LIVE SMART. BE DYNAMIQ.



Via Massa Avenza 85, 54100 Massa, Italy

www.bedynamiq.com

 @bedynamiq