



**D Y N A M I Q**

GRAN TURISMO TRANSATLANTIC SERIES

***GTT 115***

LIMITED EDITION OF 7

## THE MODERN GENTLEMEN'S SUPERYACHT.

A bespoke and beautiful yacht designed in collaboration with Studio F.A. Porsche, the 35.5 m (115') GTT 115 blends comfortable high-speed cruising with transatlantic range.

Featuring hybrid propulsion, Hull Vane and an exclusively designed four-fin stabilisation system, she embraces advanced technology for super-efficient performance and top cruising comfort.

Spacious guest areas with generous ceiling heights of 2.15 m (over 7'), as well as a massive and versatile sundeck, creates a very special onboard experience. Only seven editions of the GTT 115 will be built, making her a truly exclusive collector's item.



***GTT 115***

**LIMITED EDITION OF 7**







Best Naval Architecture  
Semi-Displacement Motor Yachts

***GTT 115***  
LIMITED EDITION OF 7





***GTT 115***

LIMITED EDITION OF 7





***GTT 115***

LIMITED EDITION OF 7





***GTT 115***

LIMITED EDITION OF 7





**GTT 115**  
LIMITED EDITION OF 7





**GTT 115**

LIMITED EDITION OF 7





*GTT 115*  
LIMITED EDITION OF 7





**GTT 115**  
LIMITED EDITION OF 7





***GTT 115***

**LIMITED EDITION OF 7**



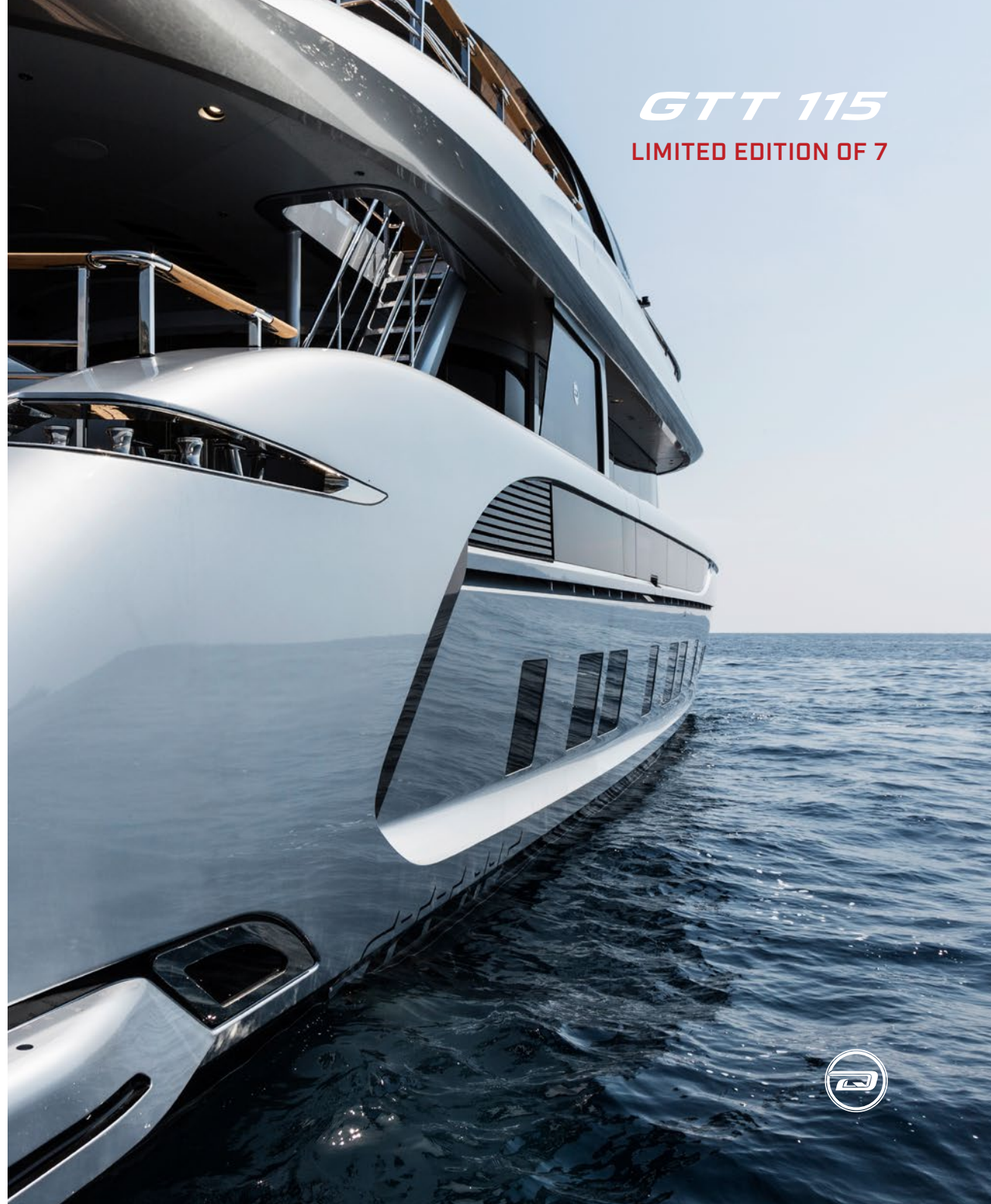


# KEY FEATURES

## Tributo PORSCHE

Studio F.A. Porsche created exclusive exteriors with the Porsche DNA. GTT 115 features the carmaker's signature elements like Targa-style mullions or transom in line with the futuristic Mission E concept study. Available in «Carrara White», «Rhodium Silver», «Chalk» or special «Monte-Carlo Blue» from Porsche line exterior colours.

Design by  
**STUDIO F·A·PORSCHE**





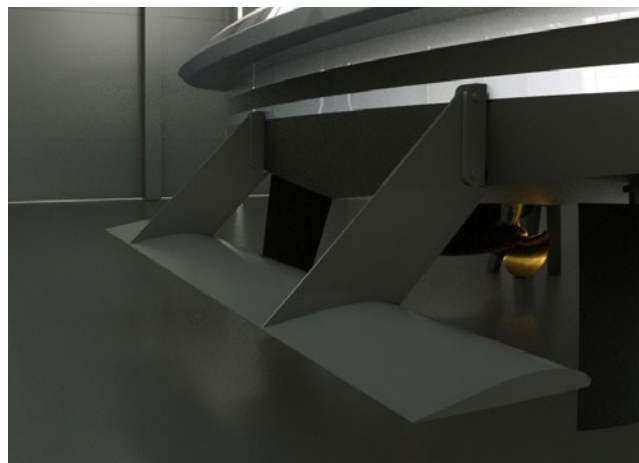
# KEY FEATURES

**GTT 115**  
LIMITED EDITION OF 7



## Hull

Drawn by the famous Dutch naval architects Van Oossanen, the GTT 115 unique hull features a round-bilge shape for remarkably low resistance and low fuel consumption, while still being capable of high speeds. The design decreases vertical accelerations in the hull, which translates into a far more comfortable motion when sailing. The avant-garde bow shape with a vertical stem maximises the waterline length, enhancing performance even more. To keep spray levels low, an integrated spray rail deflects water hitting the bow area. Built entirely from marine grade aluminium, the GTT 115 hull guarantees unparalleled comfort and safe operation for more than 25 years.



## Hull Vane® (option)

The Hull Vane® is a patented fixed foil located below the stern of a ship. Developed by renowned Dutch naval architects Van Oossanen it influences the stern wave pattern and creates hydrodynamic lift, which is partially oriented forward. This innovation leads to significant reduction of the hull's resistance, which in turn enables the installation of much smaller engines, fuel savings and longer range. The Hull Vane® also improves stability under way and at anchor, while reducing both pitching and yawing motions.



## Sundeck

The huge, 95 m<sup>2</sup> (1,022 sq/ft) sundeck is bigger than those found on much larger yachts, and has been created to allow maximum functionality. It has been carefully designed with four versatile zones: an aft sunbathing area; an alfresco dining area with 75-inch home theatre screen; a bar and barbecue zone; and a forward pool with sunbathing area. Deck furniture is Minotti outdoor collection, while deck cushions are fabric upholstered with a classic Pepita houndstooth pattern similar to the latest Porsche 991 R edition.





# KEY FEATURES

**GTT 115**  
LIMITED EDITION OF 7



## Variable speed generators & hybrid power plant (option)

The innovative Fischer Panda iSeries generators use variable speed technology, which allows the speed of the engine to be adjusted according to the electrical load and power consumed. Variable speed generators have much cleaner emissions, lower fuel consumption and are more economical to run. On the GTT 115, generators are smartly placed in the special bow compartment to avoid any noise at night or fumes when swimming off the stern.

With the main engines switched off, the generators power two ultra-compact 20 kW electric motors allowing the yacht to reach 6 knots in complete silence for an unlimited period of time (option).



## XIR Glass

The GTT 115 features next-generation laminated XIR glass that allows maximum light transmission, while keeping solar heat gain at bay. Harmful UV rays are almost completely blocked, and heat transmission reduced by 60%. The result is an interior that offers the wide panoramas of large windows without the penalty of heat build-up. This means significantly reduced air-conditioning loads and therefore lower running costs. The glass manufacturer is Isoclima, an Italian high-tech company that also supplies glass for luxury automobiles such as Bentley, McLaren, Mercedes and BMW.



## Forward garage

Unusual for a yacht of this size, the GTT 115 has a forward garage that allows the deployment of a 16-foot tender and jet-ski at any time, even when docked in port. It also provides great storage capacity far away from the guest areas.





**GTT 115**  
LIMITED EDITION OF 7





**GTT 115**

LIMITED EDITION OF 7





**GTT 115**

LIMITED EDITION OF 7





**GTT 115**

LIMITED EDITION OF 7







**GTT 115**  
LIMITED EDITION OF 7





***GTT 115***

LIMITED EDITION OF 7





# MAIN SPEC

**GTT 115**  
LIMITED EDITION OF 7



Length overall:	35.5 m / 115'
Beam:	7.1 m / 23'3"
Draft:	1.45 m / 4'9"
Material:	Full aluminium, 5083
Hull type:	Round bilge, fast displacement
Tonnage:	199 GT

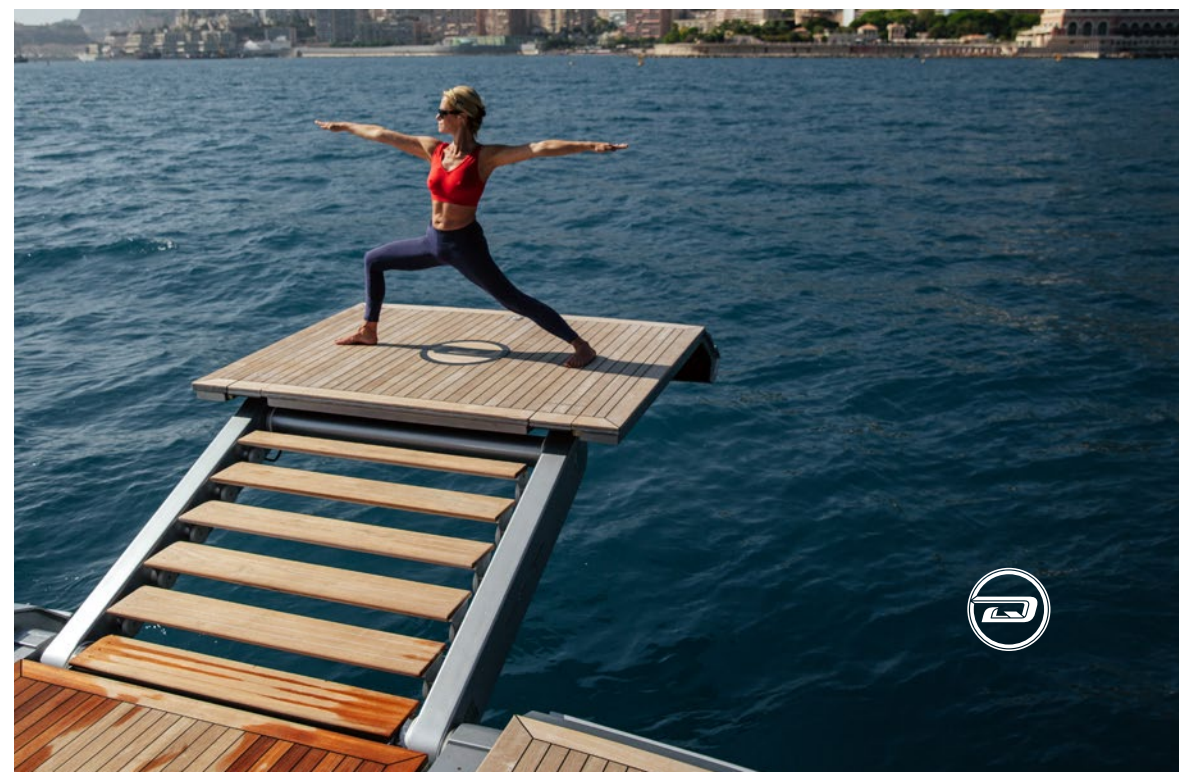
Main engines:	2x MAN V12-1650, 1,213 kW
Generators:	2x 55 kW, Kohler
Stabilisers:	2x Side Power fins, zero-speed fuction
Max speed:	21 knots
Range:	3,400 nm @ 10 knots

Fuel:	24,000 l / 6,340 US gallons
Fresh Water:	4,000 l / 1,057 US gallons
Grey and Black:	2,000 l / 528 US gallons
Guests:	10 in 5 cabins / 8 in 4 cabins / 6 in 3 cabins
Crew:	6 in 3 cabins

Class:	RINA commercial, LY4 compliant
Notations:	RINA Comfort Class, RINA Green Star
Naval architecture:	Van Oossanen
Exterior design:	Studio F.A. Porsche
Interior design:	Studio F.A. Porsche









# STRINGENT STANDARDS

In order to create a perfect yacht, from the outset Dynamiq decided to comply with the strictest requirements for comfort and safety. Every Dynamiq yacht is built in accordance with the latest Large Yacht Code (LY4) commercial regulations. This not only makes them ultra safe, but also means they can be chartered to provide an income for their owners.

Dynamiq and its partners are deeply aware of the need for sustainability. We strongly believe that eco-friendly yachts are a requirement for today's owners and their guests. That is why our yachts feature fuel-efficient hulls and reduced air-conditioning loads thanks to special XIR laminated glass.

We are genuinely committed to protecting the world's oceans, coastlines and the global ecology by reducing fuel consumption and emissions through innovative waste management solutions. All Dynamiq yachts are designed and built to meet the strict environmental standards of RINA's Green Star Plus notation.

Moreover, intensive research into reducing sound and vibration and the use of modern insulation materials create a near silent yacht with exceptional acoustic privacy between cabins. These elevated levels of comfort for passengers and crew have been rewarded with RINA's prestigious Comfort Class notation.





***GTT 115***

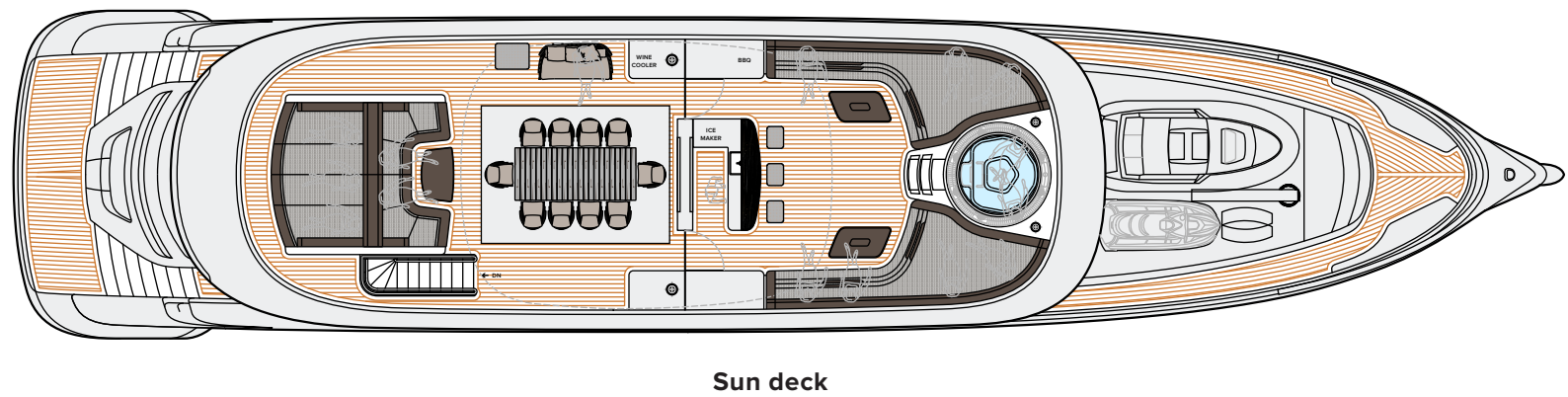
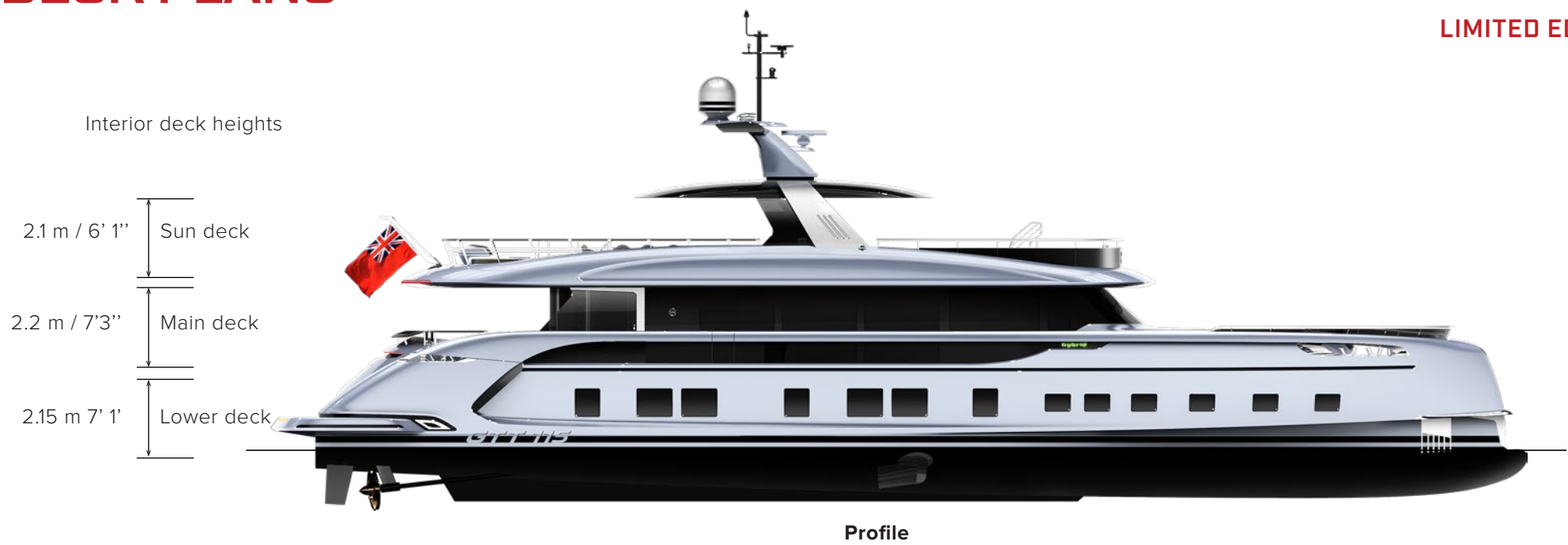
**LIMITED EDITION OF 7**





# DECK PLANS

**GTT 115**  
LIMITED EDITION OF 7



This drawing is the property of Dynamiq Yachts SARL and is not to be modified, used or reproduced in whole or part without written permission.

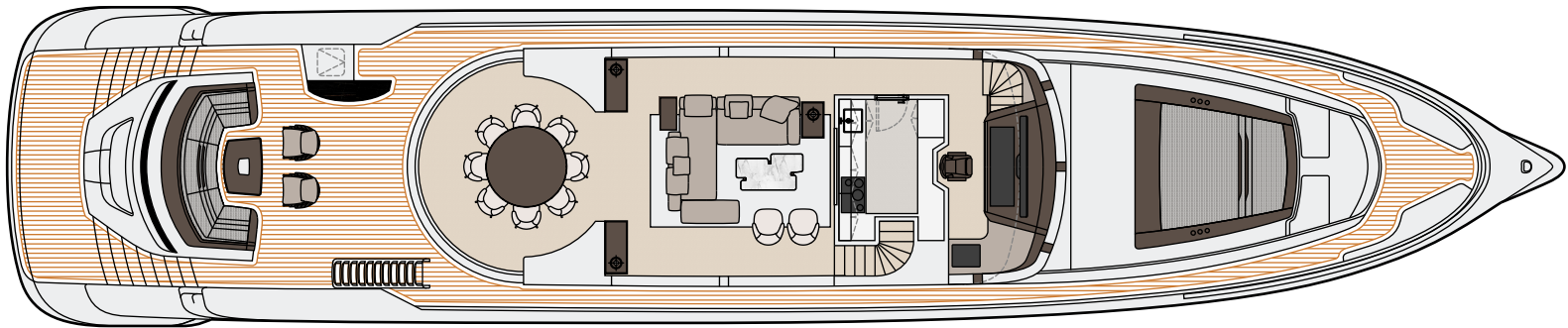




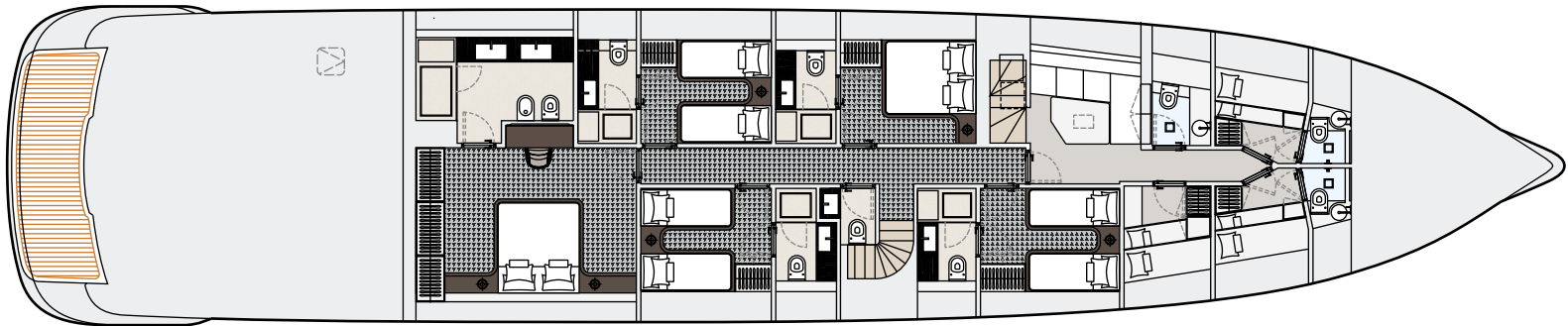
# DECK PLANS

5 cabins version

**GTT 115**  
LIMITED EDITION OF 7



Main deck



Lower deck

This drawing is the property of Dynamiq Yachts SARL and is not to be modified, used or reproduced in whole or part without written permission.

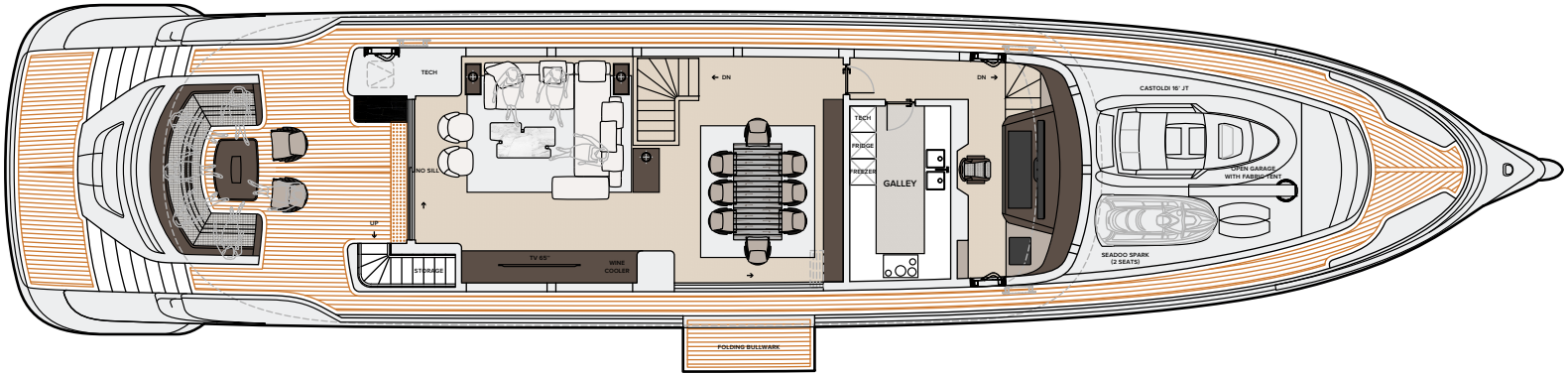




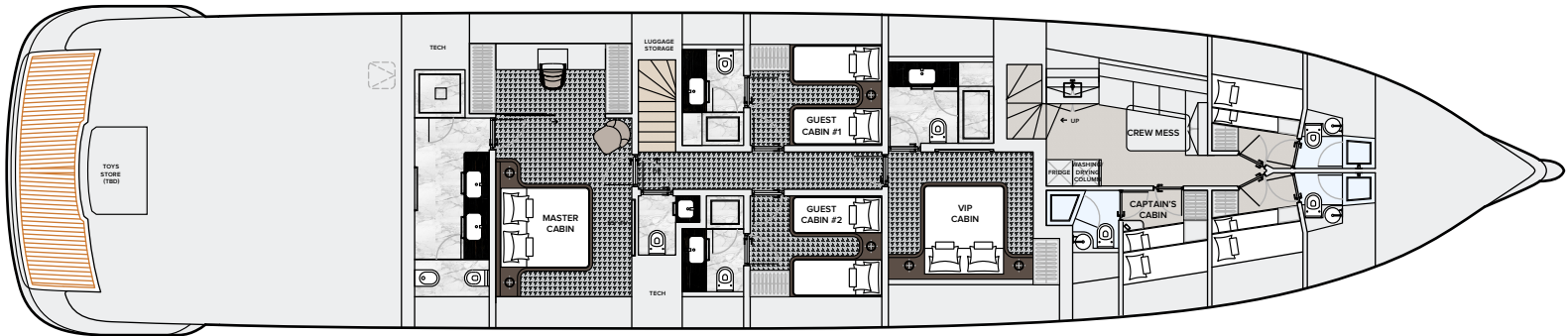
# DECK PLANS

4 cabins version

**GTT 115**  
LIMITED EDITION OF 7



Main deck



Lower deck

This drawing is the property of Dynamiq Yachts SARL and is not to be modified, used or reproduced in whole or part without written permission.

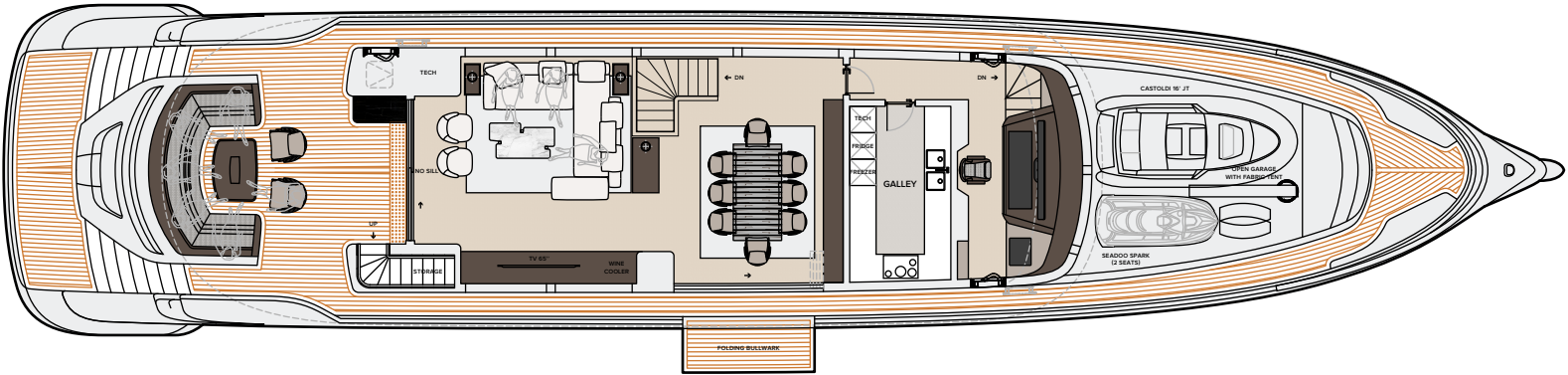




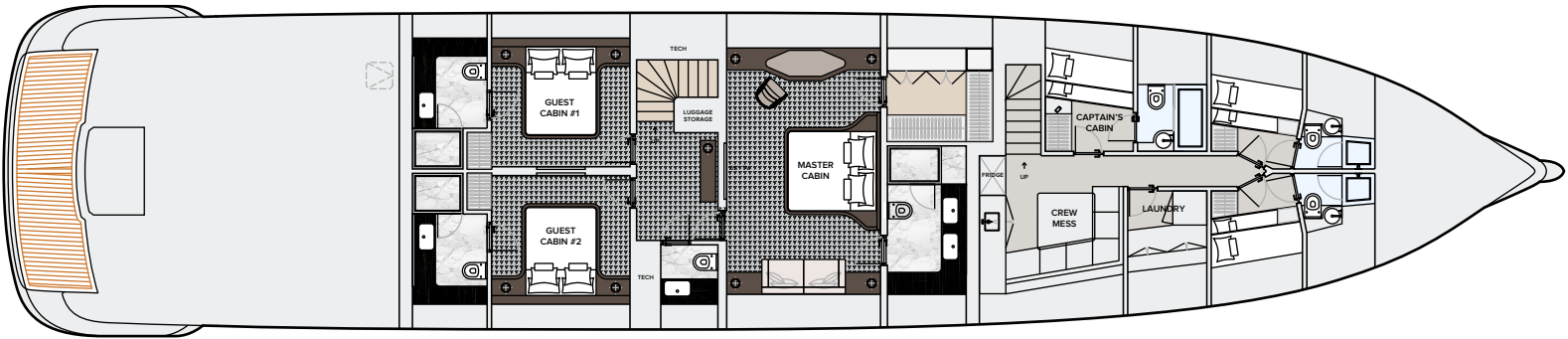
# DECK PLANS

3 cabins version

**GTT 115**  
LIMITED EDITION OF 7



Main deck



Lower deck

This drawing is the property of Dynamiq Yachts SARL and is not to be modified, used or reproduced in whole or part without written permission.





# PRICE, OPTIONS & PAYMENT TERMS

**GTT 115**  
LIMITED EDITION OF 7

**BASE PRICE:** € 12,500,000

**OPTIONS\*:**

<input type="checkbox"/> Sport package	€ 250,000
<input type="checkbox"/> Hybrid package	€ 224,000
<input type="checkbox"/> "Stabilisation Plus" package	€ 73,000
<input type="checkbox"/> Silent package	€ 115,000
<input type="checkbox"/> Hull Vane	€ 152,000
<input type="checkbox"/> Minotti package	€ 270,000
<input type="checkbox"/> B&W high-end audio system	€ 39,000
<input type="checkbox"/> Heated bathroom floors	€ 17,500
<input type="checkbox"/> Fine marbles in luxury areas	€ 64,000
<input type="checkbox"/> Bed linen, bath and deck towels by Pratesi	€ 45,000
<input type="checkbox"/> Interior scent diffusion	€ 4,500
<input type="checkbox"/> Sundeck cinema and disco package	€ 19,000
<input type="checkbox"/> Crew call buttons	€ 8,000
<input type="checkbox"/> Miele electric BBQ on sundeck	€ 3,500
<input type="checkbox"/> Ice dispenser and fridge in sun deck bar	€ 8,000
<input type="checkbox"/> 2 x Miele wine coolers on sundeck	€ 9,000
<input type="checkbox"/> Panasonic bow camera	€ 4,500
<input type="checkbox"/> Sundeck TV wall & bar	€ 55,000
<input type="checkbox"/> Sundeck pool Riviera Wave 255 Public	€ 27,500
<input type="checkbox"/> 9 Underwater lights	€ 24,000
<input type="checkbox"/> VSAT Intellian V60	€ 35,000
<input type="checkbox"/> 2 zone IR heating	€ 9,500

**PAYMENT TERMS:**

Contract signature	20%
Keel laying	20%
Main engines at the yard	25%
Interior installation start	20%
Launch	10%
Delivery	5%

**BUILD TIME:**

16 months

\* More options are available at [bedynamiq.com](http://bedynamiq.com)





***GTT 115***

LIMITED EDITION OF 7





***GTT 115***

LIMITED EDITION OF 7



Rhodium Silver Metallic





***GTT 115***

LIMITED EDITION OF 7



Carrara White Metallic





# THE SHIPYARD

Dynamiq is a private shipyard founded in 2014 and owned by yacht broker and designer Sergei Dobroserdov. His main strategy with Dynamiq was to create a well-organised and owner/broker-friendly facility where clients and their reps can enjoy a creative and transparent construction process.

Dynamiq is the only shipyard in Italy building yachts to North European standards that are 100% created by leading naval architects and structural or mechanical engineering companies in the Netherlands. Dynamiq production is located in the picturesque area of Massa on Italy's Tuscan coast. This modern and high-tech facility is fitted out for building the full range of Dynamiq superyachts up to 50 metres in length with various powertrain options, including hybrid technology. The Dynamiq Yachts production facility offers the highest standards of working environment and quality control.

Come to Dynamiq if you want:

1. Original contemporary design;
2. Top-quality full-aluminum construction;
3. Complete Dutch engineering with naval architecture by Van Oossanen;
4. Top-class contractors and leading brand partners from interior design to high-end audio-visual;
5. Competitive Italian prices.





# DYNAMIQ RANGE

## THE GRAN TURISMO TRANSATLANTIC SERIES



Model	GTM 90	GTT 115	GTT 135	GTT 160	GTT 165
LOA	27,5 m / 90'	35.5 m / 115'	41 m / 135'	49.5 m / 162'	50 m / 165'
Beam	6.7 m / 21' 11"	7.1 m / 23' 3"	8.2 m / 26' 11"	8.7 m / 28' 6"	8.5 m / 27' 10"
Draft	1.75 m / 5' 9"	1.45 m / 4' 9"	1.8 m / 5' 11"	2 m / 6' 6"	2 m / 6' 6"
Max speed	31 knots	21 knots	21 knots	17 knots	20 knots
Range	900 nm @ 15 knots	3,400 nm @ 10 knots	3,000 nm @ 12 knots	4,000 nm @ 10 knots	4,000 nm @ 12 knots
Engines	3x Volvo Penta, 735 kW	2x MAN, 1,213 kW	2x MAN, 1,213 kW	2x MAN i6, 537 kW	2x MTU 8V, 932 kW
Hull / superstructure	Aluminium, 5083	Aluminium, 5083	Aluminium, 5083	Aluminium, 5083	Aluminium, 5083
Tonnage	150 GT	199 GT	299 GT	399 GT	450 GT
Guests	8 in 4 cabins	10 in 5 cabins	11 in 5 cabins	12 in 6 cabins	12 in 6 cabins
Crew	4 in 2 cabins	6 in 3 cabins	6 in 3 cabins	8 in 4 cabins	9 in 5 cabins
Build time	18 months	16 months	16 months	24 months	28 months
Price	starting at 7,500,000 €	starting at 12,500,000 €	starting at 16,500,000 €	starting at 19,900,000 €	starting at 24,750,000 €





# DYNAMIQ RANGE

## THE GLOBAL SERIES



Model	G 290 Jaeger	G 300	G 350	G 380	G 440
LOA	29 m / 95'	30.5 m / 100'	35 m / 114'	38 m / 125'	44 m / 144'
Beam	8 m / 26' 3"	7.5 m / 24' 7"	8.5 m / 27' 10"	8.5 m / 27' 10"	9.2 m / 30' 2"
Draft	1.7 m / 5' 7"	1.45 m / 4' 9"	1.8 m / 5' 3"	2.4 m / 7' 10"	2 m / 6' 6"
Max speed	16 knots	19 knots	16 knots	15 knots	17 knots
Range	3,500 nm @ 10 knots	3,000 nm @ 10 knots	3,100 nm @ 10 knots	4,500 nm @ 10 knots	5,000 nm @ 10 knots
Engines	2x MAN, 882 kW	2x MAN, 882 kW	2x MAN, 882 kW	2x MAN, 735 kW	2x MAN, 882 kW
Hull / superstructure	Aluminium, 5083	Aluminium, 5083	Aluminium, 5083	Steel / Aluminium	Aluminium, 5083
Tonnage	220 GT	200 GT	299 GT	385 GT	499 GT
Guests	10 in 5 cabins	10 in 4 cabins	10 in 5 cabins	10 in 5 cabins	10 in 5 cabins
Crew	4 in 2 cabins	4 in 2 cabins	6 in 3 cabins	7 in 4 cabins	7 in 4 cabins
Build time	22 months	22 months	22 months	24 months	28 months
Price	starting at 9,900,000 €	starting at 9,400,000 €	starting at 16,450,000 €	starting at 18,100,000 €	starting at 23,500,000 €







**LIVE SMART. BE DYNAMIQ.**



Via Massa Avenza 85, 54100 Massa, Italy

[www.bedynamiq.com](http://www.bedynamiq.com)

@bedynamiq