



PREDATOR 50



Feel alive. Driven. Desired. Hit the waves and leave your mark. Go all in. Unleash your passion. Turn heads, open minds. Make the world aware. With Predator you've arrived. A sleek, dynamic performer that is exhilarating, agile, confident, edgy, contemporary, young and daring.



SEEK MORE

## PREDATOR 50

Pick a point on the horizon. Now own it. The Predator 50 proudly leaves any wannabe challenger in its wake. Confident, contemporary and cutting-edge, its single level living area intuitively adapts to any occasion. Entertaining or exploring, it's always ready for anything.







## PRINCIPAL CHARACTERISTICS

Length overall  
**16.48 m / 54'0"**

Beam  
**4.48 m / 14'9"**

Draft  
**1.33 m / 4'4"**

Displacement  
**19,000 kg / 41,888 lb**

Fuel capacity  
**1,800 litres / 475 US gal.**

Fresh water capacity  
**450 litres / 119 US gal.**

Black water capacity  
**136 litres / 36 US gal.**

Accommodation  
**Up to 6 guests**

Engine options  
**Volvo Penta up to 1,200 PS**

Maximum speed  
**Up to 32 knots**

Range @ 21 knots  
**Up to 235 nautical miles**

Drives  
**Shafts**









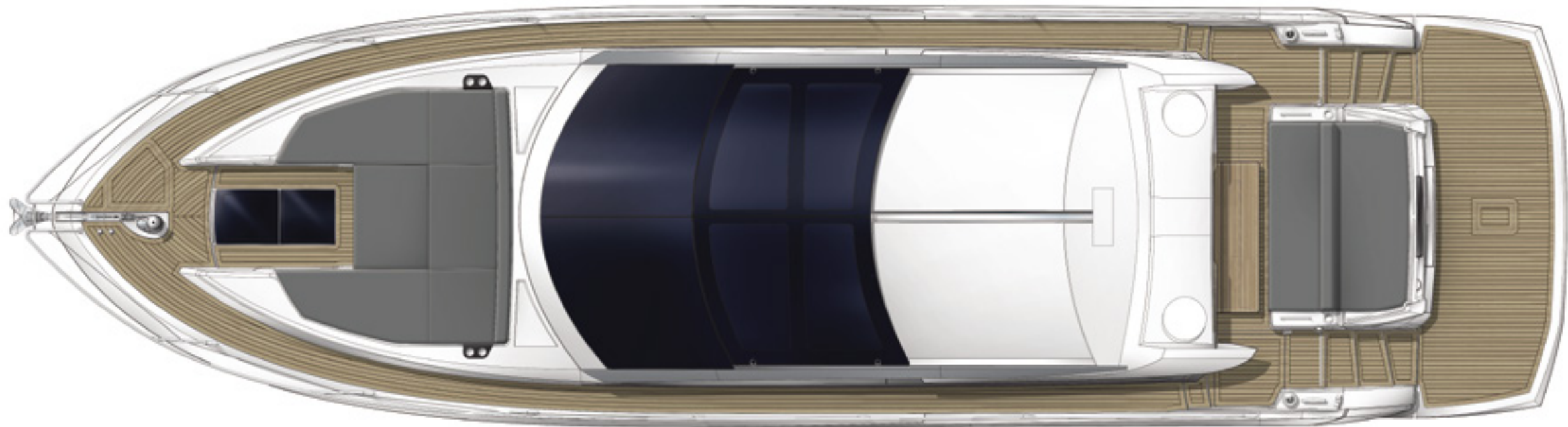


**PREDATOR 50**  
GENERAL ARRANGEMENTS



# PREDATOR 50

## GENERAL ARRANGEMENTS



### EXTERIOR PLAN

Shown with optional teak side decks and stern winches



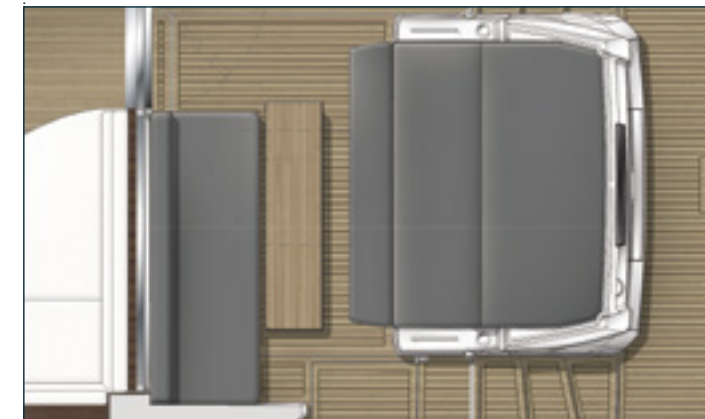
# PREDATOR 50

## GENERAL ARRANGEMENTS



### MAIN DECK

Shown with optional teak saloon flooring



### MAIN DECK OPTION

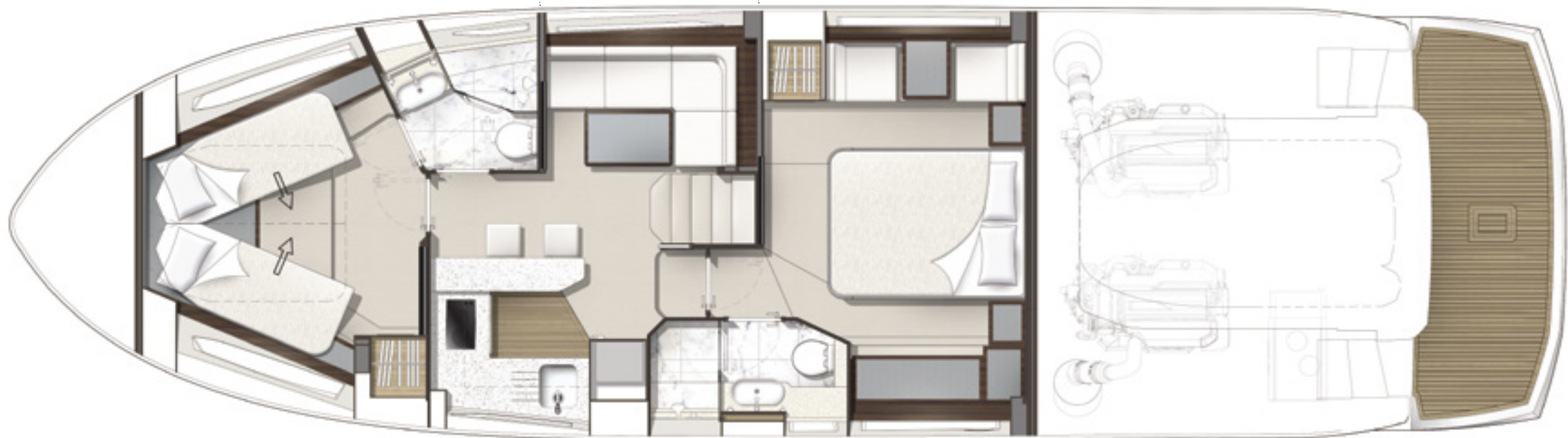
Shown with standard folded table  
and sun-lounger in open position



# PREDATOR 50

## GENERAL ARRANGEMENTS

LOWER DECK OPTION  
Pullman cabin in lieu of lower saloon



LOWER DECK  
Shown with optional galley bar stools



Whilst every attempt has been made to provide accurate information, the information in this brochure is not intended to be and should not be relied upon as providing any warranty, representation, guarantee, or offer. Performance and range figures are estimates to be used as an indicative guide only. Dirt or marine growth on the hull, size of boat, engine choice and tuning, propeller condition and pitch, air and water temperature, fuel weight and quality, water weight, stores, number of people on board and other factors can each affect a boat's performance and range. The photographs and artist's impressions in this brochure are from existing models in the Sunseeker range. There may be items shown in these photographs and impressions that are not included in the standard inventory of the models shown. Specifications, measurements and certain other details contained in this brochure may relate to models only for sale in a particular territory. We cannot guarantee that the entire Sunseeker range will be available in every territory. Specifications for models sold in different territories may also vary. Specifications may be changed or models withdrawn at any time without prior notice. The individual specification for each vessel will be agreed as part of the order process and confirmed in the sales contract between the purchaser and the approved Sunseeker distributor or dealer for the relevant territory. Please contact the local Sunseeker distributor or dealer in the territory which is of interest to you, to enquire as to the models and options that are likely to be available in that territory. This brochure is created and published in the United Kingdom and made available to authorised distributors and dealers of new Sunseeker manufactured motoryachts outside of the United States of America and Canada. In the United States of America and Canada, Sunseeker USA Sales Co. Inc. is the issuer of this brochure and is responsible for its content. All distributors or dealers of new Sunseeker manufactured motoryachts are independently owned and controlled businesses. They are not subsidiaries of, nor agents for Sunseeker International Limited, Sunseeker USA Sales Co. Inc. or any of their respective parent, subsidiary or affiliated companies ("Sunseeker Group"). As such, no distributor or dealer has any authority to bind or obligate any Sunseeker Group company in any way.

Information about how we use personal data is set out in our Privacy Policy at <https://www.sunseeker.com/legal>

Photographer acknowledgements; Andy Cahill, Ian Winstanley, Jeff Brown, James McGregor, Mike Jones and Quin Bisset.  
Designed, written and produced by McCann Milton Keynes. January 2020 ©Sunseeker International Limited.