

*PREDATOR* / *68*





# SEEK

*We believe that to stop seeking  
in life is to stop living.*

*Which is why we never let the sun set  
without knowing we looked for more.*

*The most innovative design.*

*Exhilarating engineering.*

*Jaw-dropping performance.*

*Breathtaking attention to detail.*

*Awe-inspiring motoryachts to make the  
heart race and the soul sing.*

*By daring to go where others don't, we'll  
take you to places others only dream of.*

*To do this, we constantly  
seek perfection.*

*And then, when we think  
we've found it?*

*We seek more.*

# MORE



## CONTENTS

Introduction	04
Heritage	06
Design & Innovation	08
100 over 100FT	10
Craftsmanship	12
Individuality	14
Predator 68	16
General Arrangements	24
Specifications	26
Awards & Achievements	28
Acknowledgements	29





## SEEKING A DREAM, MAKING A WORLD

*In 1969, Robert and John Braithwaite were two brothers with a dream – to create a boat to surpass anything made before.*

*That same year, the Braithwaites built the first Sunseeker. It was the seed of a whole new world.*

*Steadily and surely, the brothers grew their business from their small shipyard in Poole on the south coast of England.*

*Always seeking better boat building techniques, each craft became more ambitious, more creative – and consequently more successful – than the last.*

*Now, 50 years on, Sunseeker International has over 80 dealerships networked around the world, delivering over 150 boats a year globally.*





## EXCELLENCE. ALWAYS

*When the Braithwaite brothers started up the engine of a small, open-cockpit speedboat in 1969, it wasn't just the Hostess 17 that roared into life. It was a new standard of yacht making.*

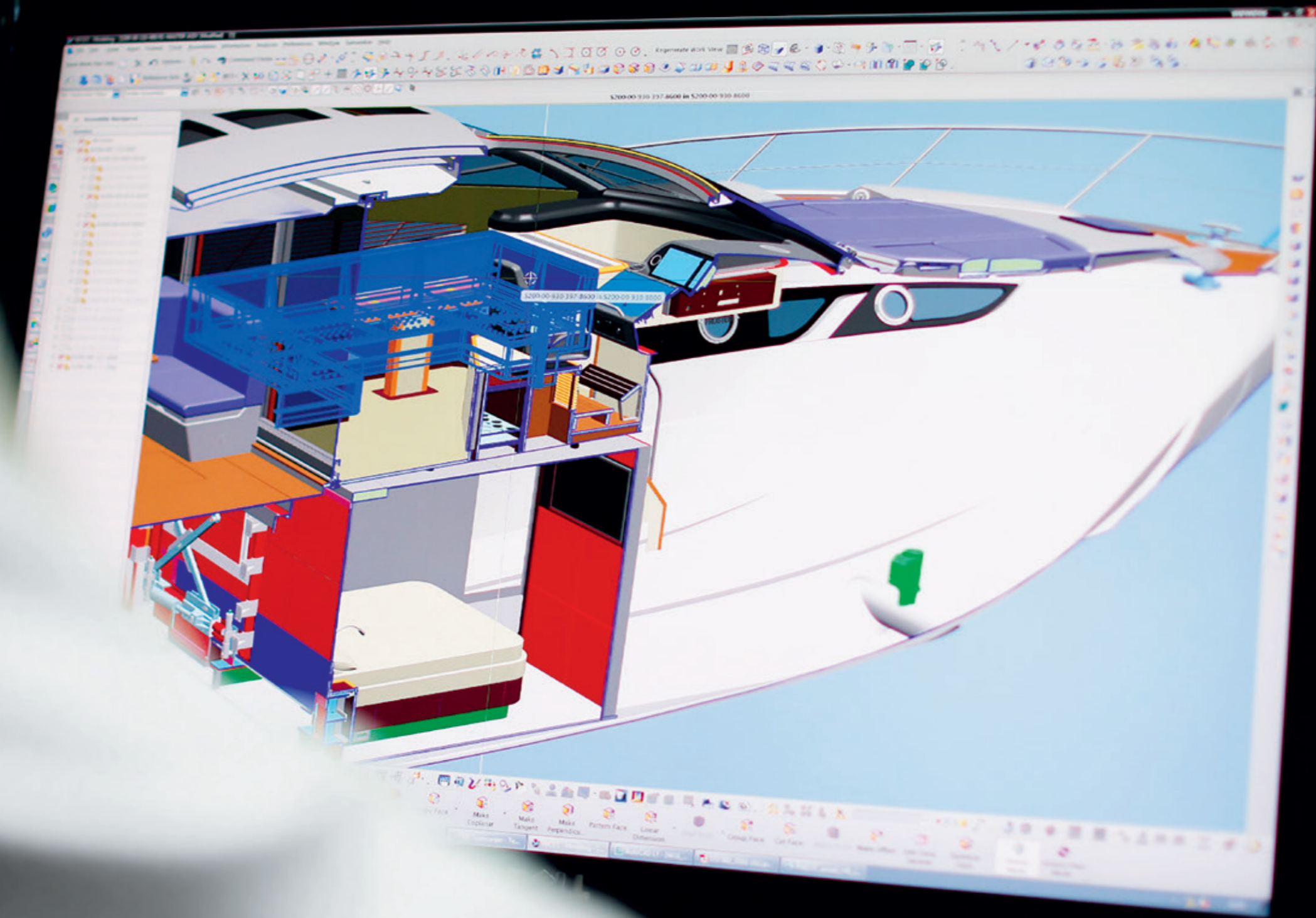
*Today, their passion to exceed boundaries is as strong as ever before, brought to life by a team of over 2,000 highly skilled designers, engineers and master craftsmen.*

*Bold new creations like the 155 Yacht keep us pushing our standards ever further, year upon year.*

*Just as we have always done.*

*The flagship 155 Yacht is the epitome of our tireless precision and attention to detail. It is this ceaseless desire to always excel in every detail that gives every Sunseeker its vital presence, performance and luxury.*





## THROUGH INNOVATION COMES EXHILARATION

*Intelligent innovation is the philosophy that rules everything we create.*

*It is why we have become the only manufacturer to produce a luxury yacht range from 50 to 155ft under one name.*

*Our in-house design team, still steadfastly guided by John Braithwaite, is at the vanguard of marine design, technology and engineering excellence.*

*It is a dream team with the incomparable vision, confidence and skill to continually innovate our boat design – to create ever more thrilling experiences and adventures. Invention for inspiration.*

*It is the simple reason why customers the world over await the next Sunseeker with such anticipation.*

*Because the world knows every new Sunseeker promises innovation that truly exhilarates.*





## 100 OVER 100FT

*It is a landmark that signals a bold new age for Sunseeker.*

*A milestone that measures the sheer breadth of our range of exceptional yachts, built upon a heritage of innovation and craftsmanship spanning 50 years.*

*On 9 September 2015, we held an exclusive celebration at Cannes Yachting Festival to recognise the delivery of our 100th luxury performance yacht in the 100ft+ superyacht category.*

*It was summer 2000 that we first launched a model over 100ft long – the unforgettable 105 Yacht, which went on to win two of the world's most prestigious accolades in the International Superyacht Design awards. It was the first step in our journey to become a major player in the superyacht sector.*

*Amazingly, it has taken just 15 years to reach our newest milestone.*

*Today, we produce around seven 100ft+ yachts every year. Our range now encompasses boats from the powerful 101 Sport Yacht to the majestic flagship 155 Yacht, with a world of bespoke options in between.*

*And of course we're always seeking more. With each new creation, a new best is born. Blending cutting-edge technology with traditional handcraft to create yachts that inspire and delight.*

96'

97'

98'

99'

101'

102'

103'

104'





## EXCEPTIONAL CRAFT, PROUDLY HANDCRAFTED

*A hawk's eye, expert hands and a devilish attention to detail.*

*Passed from generation to generation, these are the most important skills required to make a Sunseeker.*

*In an age of digital production and automated assembly, we stay committed to creating hand-built, hand-finished boats – for one simple reason.*

*There is no better way to craft such an exceptional product.*

*Inside and out, the extraordinary detail, finish and sheer artistry of our yachts can only be achieved by human qualities.*

*And, most importantly, no machine can ever give our boats such spirit, or take such pride in their creation – a vitality passed on to every owner.*





## MAKE IT YOUR SIGNATURE

*Your signature is truly unique.*

*No-one else has one quite the same. And so it should be with your very own Sunseeker.*

*Which is why we have our truly unique Bespoke service, offered for yachts 100ft and above. It offers you something truly unique. A blank sheet of paper for you to create a yacht personalised in any way you wish.*

*From floor plans to unique furnishings, your imagination and passion can be fully expressed.*

*With some of Britain's finest in-house interior designers at your side, you can choose materials, fabrics and finishes to reflect your unique desires and individuality.*

*To give your Sunseeker something no-one else can. Your signature.*

*Bespoke*





## PREDATOR 68

<b>Length overall</b>	21.7m	71'2"
<b>Beam</b>	5.09m	16'9"
<b>Draft</b>	1.58m	5'2"
<b>Displacement</b>	37,300kg	82,232lb
<b>Fuel capacity</b>	3,500 litres	925 US gal.
<b>Fresh water capacity</b>	800 litres	211 US gal.
<b>Accommodation</b>	Up to 6 guests & up to 2 crew members	
<b>Engine options</b>	Up to 2 x 1550PS	
<b>Performance</b>	Up to 42 knots	
<b>Range</b>	Up to 300 nautical miles	
<b>Drives</b>	Shafts or Arneson surface drives	













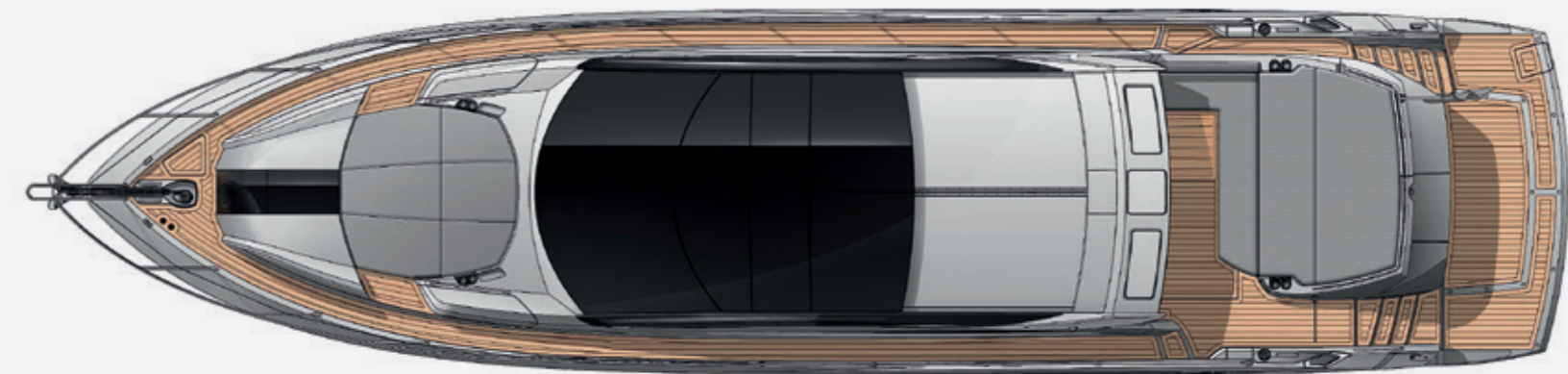


# GENERAL ARRANGEMENTS

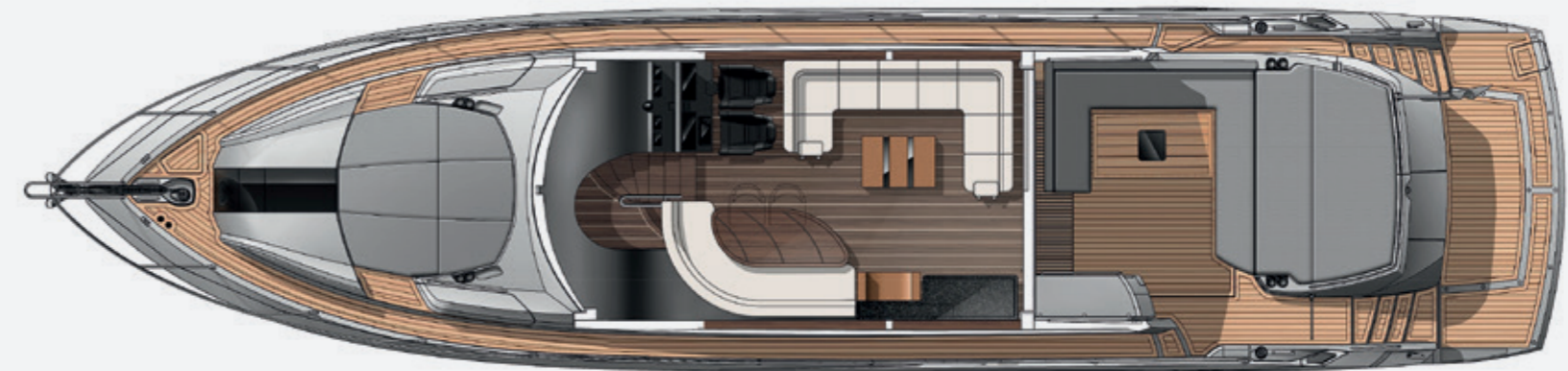
PREDATOR 68



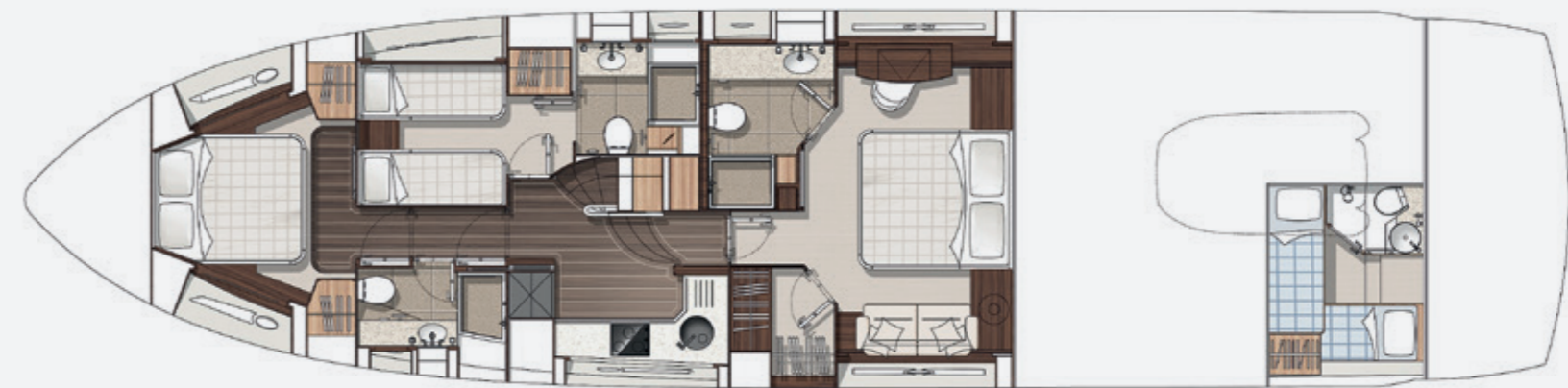
SIDE PROFILE



EXTERIOR PLAN  
Shown with optional teak side decking



MAIN DECK  
Shown with optional teak side decking



LOWER DECK  
Shown with optional crew cabin



## STANDARD SPECIFICATIONS

### 1 Construction

Hand-laid GRP  
Gel coat including stripes  
Vinylester skin coat with powderbound mat  
Stitched multi-axial reinforced single-skin bottom  
Balsa-cored hull topsides  
PVC foam-cored deck and superstructure  
Hull stiffened with longitudinal stringers supported by transverse bulkheads and floors

### 2 Deck

Fittings all in stainless steel  
8 x stainless steel deck cleats  
Pulpit and cockpit rails  
Stainless steel fendering with rubber insert  
Curved safety glass windscreen  
Stainless steel bow roller with anchor stop  
Stainless steel bow plate  
Delta anchor and 60 metre chain (galvanised)  
Electric winch and capstan with deck and interior helm controls  
Chain locker/fender stowage  
Fender tie bar under anchor locker lid  
Fore deck coach-roof storage lockers  
Fuel fillers port and starboard  
Fresh water filler  
IMCO navigation lights  
2 x Pantograph windscreen wipers and washers  
Garage for tender  
Ensign staff and socket

### 3 Bathing Platform

Hydraulic lifting platform  
Teak-laid bathing platform and steps  
Hot and cold swimming shower  
Fresh water marina connection  
Dockside AC shore power connection  
Stainless steel swimming ladder

### 4 Aft Cockpit

Self-draining  
Teak-laid cockpit decking  
Stern safety door  
Cockpit speakers with CD remote  
Wetbar sink with hot and cold water, cool box, ice maker, locker and griddle

Upholstered seating around cockpit table

Large stern sunbather  
Lockers beneath seating  
Overhead cockpit lights 24v  
Low-level courtesy lights 24v  
Engine room access hatch  
Boat hook

### 5 Helm Console

Twin helm seats  
Navigation console with chart area  
Hydraulic power steering  
Leather rimmed steering wheel  
Analogue engine instrumentation  
Chart plotter with GPS  
Radar open scanner  
Autopilot  
Speed and depth instrumentation  
VHF radio with DSC  
Rudder indicator  
Water tank gauge  
Fuel tank gauge  
Trim tab controls  
Single-lever electronic engine controls  
Magnetic compass  
Waterproof plug and socket 12v  
Horn  
Windscreen wipers and washers  
Glass holders  
Hand-held fire extinguisher

### 6 Deck Saloon

Separate dining area with table  
Stowage beneath seats  
Television 55" on fall and rise system  
Blu-ray/DVD/CD cinema sound system  
Drinks cupboard  
Overhead halogen lighting LED 24v  
Stainless steel sliding door to cockpit  
Main control panel (AC/DC)  
Generator controls  
Air conditioning  
3 x double AC sockets  
Wood flooring  
Choice of interior finishes and veneers  
Scatter cushions

### 7 Galley

Sink and drainer  
3-ring ceramic touch-control hob and extractor fan  
Electric refrigerator  
Electric freezer  
Microwave convection oven  
Hot and cold water  
Rubbish bin  
Cupboard and drawer storage  
8 place crockery set  
8 place cutlery set  
2 x double AC sockets  
Hand-held fire extinguisher  
First aid kit  
Wood flooring

### 8 Forward Stateroom

Double berth  
Storage beneath  
Drawer in base-end  
2 x reading lights 24v  
Outboard shelving and cupboards  
Overhead bedside cupboards  
Hanging wardrobes with mirrored panel  
Overhead lights LED 24v  
2 x opening portholes with mosquito screens  
Portlight blinds  
Deck hatch with blind and mosquito screen  
Skylight  
2 x double AC sockets  
Door to shower room  
Fitted carpet  
Air conditioning  
32" television  
Blu-ray/DVD/CD player with speakers

### 9 Forward En Suite Shower Room

Washbasin  
Taps and accessories  
Hot and cold water supply  
Separate shower compartment  
Electric toilet  
Extractor fan  
Mirrored vanity unit  
Shelved cupboard  
Toothbrush and glass holder

Soap dispenser  
Towel ring and towels

Overhead lights  
Opening porthole with mosquito screen and blind  
Razor socket 240/110v

### 10 Starboard Guest Cabin

2 x single berths  
Under-berth storage  
2 x reading lights 24v  
Hanging wardrobe  
Overhead lighting LED 24v  
Opening porthole with mosquito screen and blinds  
Double AC socket  
Fitted carpet  
Air conditioning  
22" television  
Blu-ray/DVD/CD player with speakers

### 11 Starboard En Suite Shower Room

Washbasin  
Taps and accessories  
Hot and cold water supply  
Separate shower compartment  
Electric toilet  
Extractor fan  
Mirrored vanity unit  
Shelved cupboard  
Toothbrush and glass holder  
Soap dispenser  
Towel ring and towels  
Overhead lights LED  
Opening porthole with mosquito screen and blind  
Razor socket 240/110v

### 12 Master Aft Stateroom

Double berth  
Cupboard and drawer stowage  
2 x reading lights 24v  
Bedside drawers  
Walk-in wardrobe  
Overhead lights LED 24v  
2 x large windows with opening portholes, mosquito screens and blinds  
Two double AC sockets

Door to shower room  
Fitted carpet  
Settee  
Air conditioning  
32" television  
Blu-ray/DVD/CD player with speakers

### 13 Aft En Suite Shower Room

Washbasin  
Taps and accessories  
Hot and cold water supply  
Separate shower compartment  
Electric toilet  
Extractor fan  
Mirrored vanity unit  
Shelved cupboard  
Toothbrush and glass holder  
Soap dispenser  
Towel ring and towels  
Overhead lights LED  
Opening porthole with mosquito screen and blind  
Razor socket 240/110v

### 14 Crew Cabin

Entrance door from rear cockpit  
Two single berths  
Wardrobe  
Storage locker  
Opening porthole with mosquito screen  
Overhead lights LED  
Reading lights 24v DC  
Double AC socket  
Air conditioning  
Separate shower room with hot and cold water  
Electric toilet and holding tank  
Shaver socket 240/110v

### 15 Electrical System

19kW 50Hz generator with underwater silent exhaust and sound shield  
AC dockside connection  
Galvanic isolator  
24v and 12v DC electrical system with full circuit breaker protection  
8 x engine batteries 24v circuit  
4 x domestic batteries 24v circuit

2 x generator batteries 12v circuit  
Alternator split charging system  
Remote battery switches controlled from locker in cockpit  
Battery charger for 24v circuits  
Battery charger for 12v circuits  
Water heater  
AC electrical sockets throughout the boat  
24v hand light and cable

### 16 Engine Compartment and Ancillaries

Soundproofing throughout  
Fuel filters/water separators to engines  
Fuel filters/water separators to generators  
Automatic bilge and flood pumps with high-level alarms  
Generator exhaust silencers and water separators  
Engine exhaust dry risers and water injection  
Strainers to all raw water inlets  
Power steering – hydraulic control steering  
Garage door and trim tabs hydraulic control unit  
Lifting platform hydraulic control unit  
Air intakes fitted with emergency shutdown flaps (automatically operated)  
Air extraction fans (AC) fitted with butterfly shutdown dampers  
Exhaust gas temperature sensor  
Fluorescent lights (AC)  
Engine room fire extinguishing system (FM200)  
1 x AC 220v socket  
1 x 24v socket  
Portable CO2 fire extinguisher  
Inspection lamp

### 17 Underwater Gear

Bow thruster – Electric 24v  
Seawater strainers – nickel-plated bronze  
Full cathodic bonding system to zinc anodes  
Hydraulic trim tabs – stainless steel  
Propeller shafts – Temet 25  
High performance rudders – AB2  
P-brackets – NAB nickel aluminium bronze c/w water lubricated bearing  
Self-aligning shaft seal including spare seal  
5-blade AB2 bronze propellers

### 18 Systems

Hydraulic power steering  
Electric toilet system with integral macerator (24v)  
Toilets discharging overboard or to black water tank  
Black water tank discharging to dockside or overboard  
Aluminium fresh water tank with electric sending unit  
Fuel tank with electric sending unit  
Water pressure system (24v)  
Washbasins, showers and air conditioning fan coils to drain to grey water tank  
Grey water tank discharging overboard  
Self-contained air conditioning system (reverse cycle) AC  
Bilge pumping system (24v)  
Manual/automatic fire extinguishing system combined with engines, generators and fans shutdown  
Auxiliary hydraulics for trim tabs and platform (24v)

### 19 Miscellaneous

Toolkit  
Boat hook  
4 x mooring ropes  
8 x fenders  
3 sets towels

### Optional Extras

Retractable electric awning  
Teak side decks  
Hydraulic gangway  
Bow sunbathing cushions



# AWARDS AND ACHIEVEMENTS

2015

ASIA BOATING AWARDS  
Best Brand Presence

2014

WORLD YACHT TROPHIES  
101 Sport Yacht – 'Best Exterior Design'

ASIA BOATING AWARDS  
Predator 80 – Best Worldwide Production Motoryacht 15M–24M

WORLD SUPERYACHT AWARDS  
40 Metre Yacht 'Sea Raider V' – Finalist

2013

ASIA BOATING AWARDS  
Best Brand Presence

MOTOR BOAT OF THE YEAR AWARD  
28 Metre Yacht – 'Best Custom Yacht'

2012

MOTORBOAT & YACHTING AWARDS  
Manhattan 63 – 'Best Flybridge above 55ft'

ROBB REPORT CHINA  
'Best of the Best' 28 Metre Yacht

ASIA BOATING AWARDS  
28 Metre Yacht – Best Production Motoryacht 24M–40M

WORLD SUPERYACHT AWARDS  
Predator 130 'Never Say Never' – Finalist

2011

ASIA BOAT AWARDS  
Best Brand Presence in Asia

EUROPEAN CEO CORPORATE LIFESTYLE AWARDS  
Best Luxury Brand

SHOWBOATS DESIGN AWARDS FLORIDA  
Naval Architecture Motoryacht 'Evil Zana' Predator 130

2010

WORLD SUPERYACHT AWARDS  
Predator 130 'Evil Zana' – Finalist

QUINTESENTIALLY AWARDS  
Yacht Charter of the Year

SYDNEY BOAT SHOW  
Boating Industry Association of NSW – Best Marina Display

SYDNEY BOAT SHOW  
Boating Industry Association of NSW – Best Overall Display

ASIA BOATING AWARDS  
Predator 60 – Best Production Motoryacht 51 to 80 feet

2009

SYDNEY BOAT SHOW  
Display of Excellence

CROATIA BOAT SHOW  
Predator 92 Sport – Best in Class

CROATIA BOAT SHOW  
30 Metre Yacht – Best in Class

CROATIA BOAT SHOW  
Best Boat Show Stand

2008

UK MOTOR BOAT OF THE YEAR AWARDS  
Manhattan 60

2007

EUROPEAN POWERBOAT OF THE YEAR  
Superhawk 43

ASIA PACIFIC BOATING AWARDS  
90 Yacht, Best of the Best

MODERN BOATING MAGAZINE  
Portofino 47, Imported Powerboat of the Year

AUSTRALIAN MARINE INDUSTRIES FEDERATION AWARDS  
Predator 62, Imported Powerboat of the Year

NOMINATED BY THE SUPERYACHT SOCIETY  
37 Metre Yacht 'The Snapper'

QUEEN'S AWARD FOR ENTERPRISE  
International Trade

ROBERT BRAITHWAITE IS HONOURED WITH CBE  
The Queen's Birthday Honours List

2006

NOMINATED FOR THREE SUPERYACHT AWARDS  
Predator 108 'SHIVER'

2005

AUSTRALIAN MARINE INDUSTRIES FEDERATION AWARDS  
75 Yacht, Non-Trailable Boat Award

AUSTRALIAN MARINE INDUSTRIES FEDERATION AWARDS  
Portofino 46, Commendation

MODERN BOATING, POWER BOAT OF THE YEAR AWARDS  
Predator 68, Imported Powerboat of the Year

BOATS.COM MARINE INDUSTRY WEB AWARDS  
Manufacturers Category for www.sunseeker.com

2004

SYDNEY BOAT SHOW  
Best Overall Display

SYDNEY BOAT SHOW  
Best Marina Display

2003

AUSTRALIAN MARINE AWARDS  
Manhattan 56, Award for Excellence

AUSTRALIAN MARINE AWARDS  
Predator 68, Best Imported Non-Trailable Yacht

2002

ENTREPRENEUR OF THE YEAR AWARD  
Robert Braithwaite MBE

2001

BEST POWER DESIGN AWARD  
105 Yacht, The Superyacht Society

BEST POWER INTERIOR AWARD  
105 Yacht, The Superyacht Society

PRESIDENT'S AWARD  
Southern California Marine Association

2000

QUEEN'S AWARD FOR ENTERPRISE  
Continuous Innovation and Development

THE TIMES EXPORTER OF THE YEAR  
Times Export Awards

ROBB REPORT AWARD  
Best of the Best, Boating and Sailing

1999

ROBB REPORT AWARD  
Best of the Best, Boating and Sailing

MOTORBOAT OF THE YEAR  
Predator 75, BT British Nautical Awards

1998

SUPERYACHT DESIGN AWARD  
Manhattan 74, Superyacht Design Awards

EDITOR IN CHIEF AWARDS  
Yachts Magazine

1997

LIFETIME ACHIEVEMENT AWARD  
Robert Braithwaite MBE, RYA Awards

1996

MOTORCRUISER OF THE YEAR AWARD  
RYA British Nautical Awards

EXPORTER OF THE YEAR AWARD  
DCCI Export Awards

1995

BOAT BUILDER OF THE YEAR AWARD  
RYA/BMIF British Nautical Awards

1994

QUEEN'S AWARD FOR EXPORT ACHIEVEMENT  
Queen's Awards for Industry

1992

BEST IN THE WORLD AWARD  
Renegade 60, Boating Magazine

ROBERT BRAITHWAITE IS HONOURED  
WITH MBE

The Queen's Birthday Honours List

1990

EXPORTER OF THE YEAR  
SW International Business Awards

1989

QUEEN'S AWARD FOR EXPORT ACHIEVEMENT  
Queen's Awards for Industry

1987

QUEEN'S AWARD FOR EXPORT ACHIEVEMENT  
Queen's Awards for Industry

## ACKNOWLEDGEMENTS

### PHOTOGRAPHERS:

Tom Benson  
Quin Bisset  
Martin Brent  
Jeff Brown  
Andy Cahill  
Gary Castle  
Joe McCarthy  
Ian Winstanley

### CLOTHING & ACCESSORIES:

Roja Dove  
Hansgrohe  
Haviland  
Heirlooms  
Jo Malone  
Milena M.  
Tresor Paris  
Porta Romana  
SEABOB  
Itsomi Sotogrande  
Williams Jet Tenders



