



D Y N A M I Q

GRAN TURISMO TRANSATLANTIC SERIES

GTT 165

GTT 165

THE OCEAN PASSAGEMAKER

This excitingly innovative and tastefully refined 50 m (165') superyacht is the largest in the Dynamic GTT range, created for those seeking the ultimate in efficient performance and motion comfort.

In addition to the light and robust hull built of Sealium aluminum alloy, her cutting-edge technology includes a fast displacement round bilge hull, advanced stabilisation system, Hull Vane and active T-Foil (Hull Vane assist). Ten or twelve guests are luxuriously accommodated in five or six staterooms.

Capable of 21 knots and a range of 4,000 nautical miles, owners can also choose an optional hybrid propulsion system for even better efficiency and silent operation.

The GTT 165 is your exclusive home on the water for exploring the world in the company of family and friends.



GTT 165

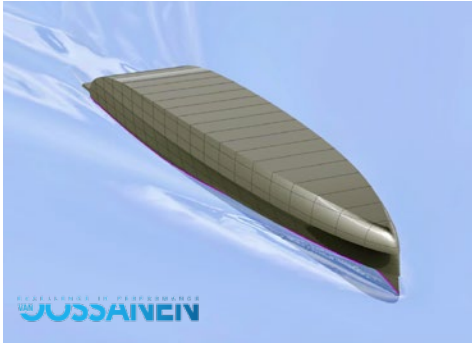


Carrara White



KEY FEATURES

GTT 165



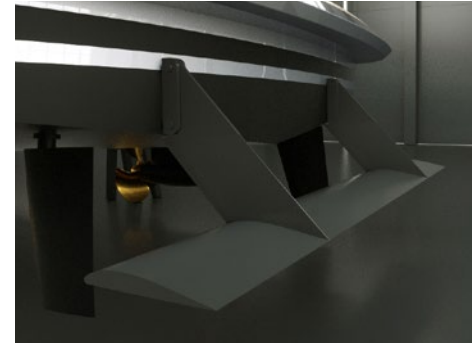
Full aluminium round bilge fast displacement hull

Drawn by the famous Dutch naval architects Van Oossanen, the GTT 165 unique hull features a round-bilge shape for remarkably low resistance and low fuel consumption, while still being capable of high speeds. The design decreases vertical accelerations in the hull, which translates into a far more comfortable motion when sailing. The avant-garde bow shape with a vertical stem maximises the waterline length, enhancing performance even more. To keep spray levels low, an integrated spray rail deflects water hitting the bow area. Built entirely from marine grade aluminium, the GTT 165 hull guarantees unparalleled comfort and safe operation for more than 25 years.



Curved fin stabilizers by Side Power

Vector Fins stabilisers dramatically reduce roll as well as undesired yaw and sway motions caused by active fins. Their vertical concave shape creates a net force direction, both in cruising and at-anchor modes, so the work is more up-down instead of side-to-side. By changing the net force angle, this also increases the leverage arm around the boat's rolling point, further increasing the physical forces that work on the boat to reduce roll. This provides more efficient stabilisation per fin size, which means that drag and power consumption are a lot less than with other fins offering comparable roll reduction.



Hull Vane®

The Hull Vane® is a patented fixed foil located below the stern of a ship. Developed by renowned Dutch naval architects Van Oossanen it influences the stern wave pattern and creates hydrodynamic lift, which is partially oriented forward. This innovation leads to significant reduction of the hull's resistance, which in turn enables the installation of much smaller engines, fuel savings and longer range. The Hull Vane® also improves stability under way and at anchor, while reducing both pitching and yawing motions.



XIR glass

The GTT 165 features next-generation laminated XIR glass that allows maximum light transmission, while keeping solar heat gain at bay. Harmful UV rays are almost completely blocked, and heat transmission reduced by 60%. The result is an interior that offers the wide panoramas of large windows without the penalty of heat build-up. This means significantly reduced air-conditioning loads and therefore lower running costs. The glass manufacturer is Isoclima, an Italian high-tech company that also supplies glass for luxury automobiles such as Bentley, McLaren, Mercedes and BMW.



KEY FEATURES

GTT 165



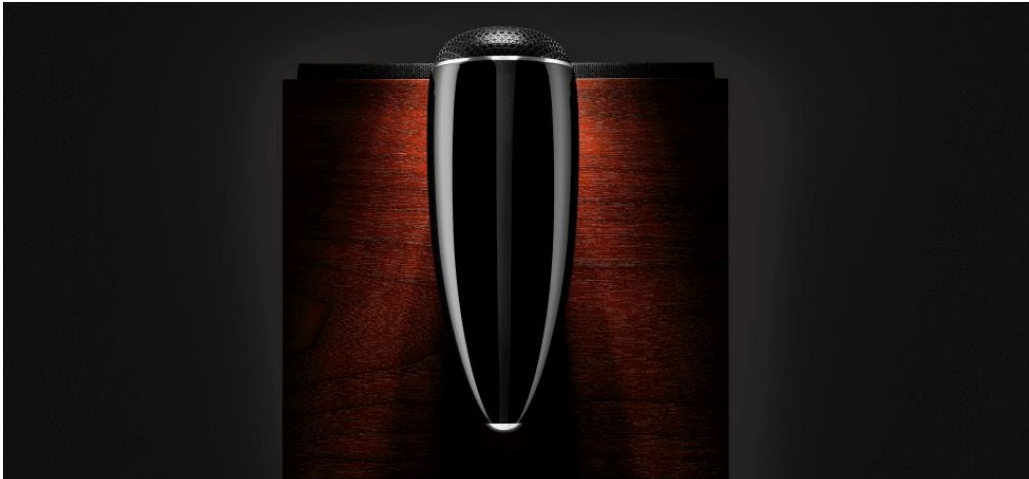
Bottega Veneta exclusive furniture collection



Japanese Teppanyaki on Sundeck



Upper saloon fireplace



Cinema room & High-end audio by Bowers & Wilkins



MAIN SPEC

GTT 165

Interior deck heights

2.2 m / 7' 3"	Sun deck
2.2 m / 7' 3"	Main deck
2.15 m / 7' 1"	Lower deck



Length overall 50 m / 165'

Length overall:	50 m / 165'
Beam:	8.5 m / 27' 10"
Draft:	2 m / 6' 6"
Material:	Full aluminium, 5083
Hull type:	Round bilge, fast displacement
Tonnage:	450 GT

Max speed GTT 165:	20 knots
Main engines:	2x MTU 8V2000M94, 932 kW
Propulsion:	2x 1,450 mm 5 blades props
Range:	2,650 nm (Transat) @ 17 knots 4,000 nm @ 12 knots

Fuel Consumption:	632 l/h @ max speed
-------------------	---------------------

Generators:	2x 100 kW, Kohler
Stabilisers:	2x 3.5 m ² Stabilizer fins, Naiad Hull Vane® + Assisted Hull Vane®

Fuel:	50,000 l / 13,210 US gallons
Fresh water:	17,500 l / 4,625 US gallons

Guests:	10 in 5 cabins / 12 in 6 cabins
Crew:	9 in 5 cabins

Tender:	Castoldi Jet 23'
---------	------------------

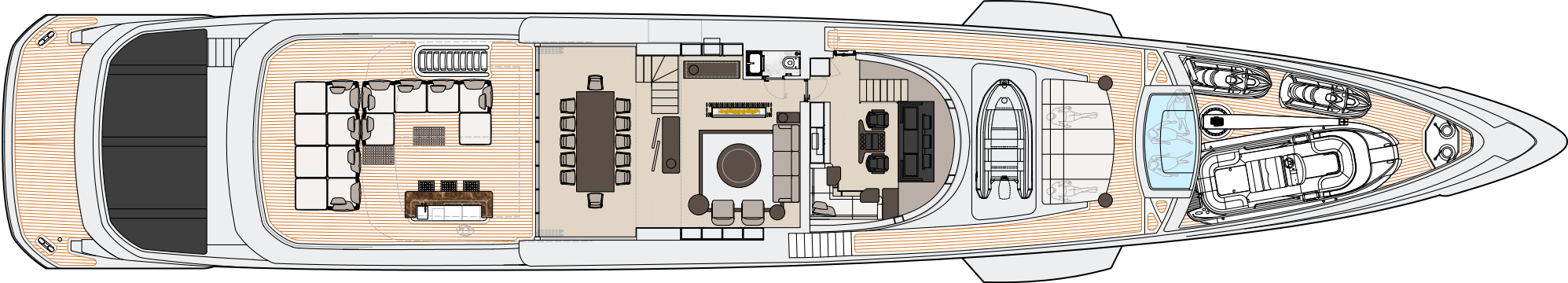
Class:	RINA commercial, LY4 compliant
Notations:	RINA Comfort Class, RINA Green Star

Naval architecture:	Van Oossanen
Exterior design:	Dobroserdov Design
Interior design:	Giuseppina Arena / Dynamiq

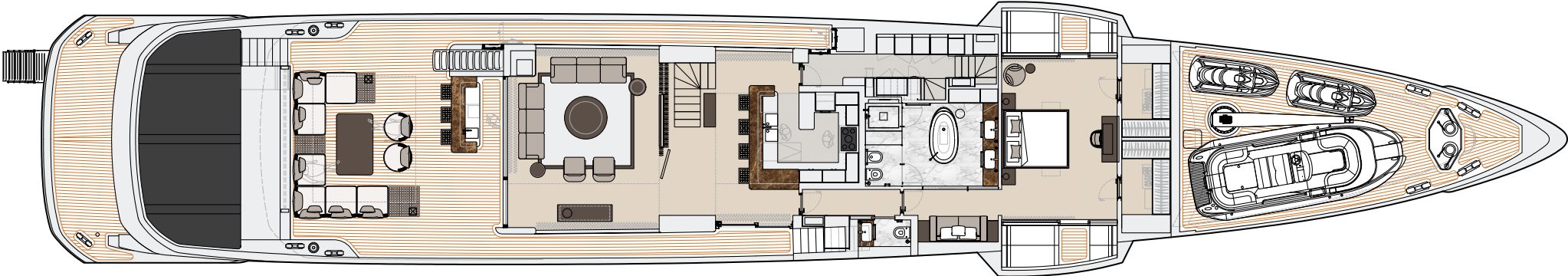


DECK PLANS

GTT 165



Upper deck



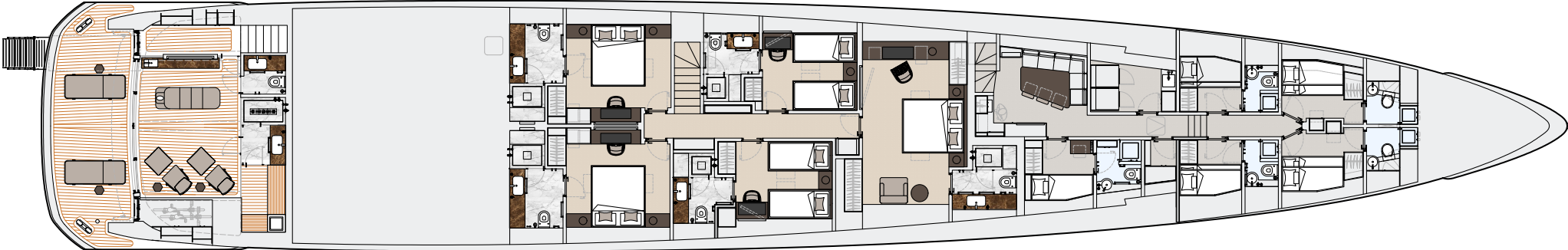
Main deck

This drawing is the property of Dynamiq Yachts SARL and is not to be modified, used or reproduced in whole or part without written permission.

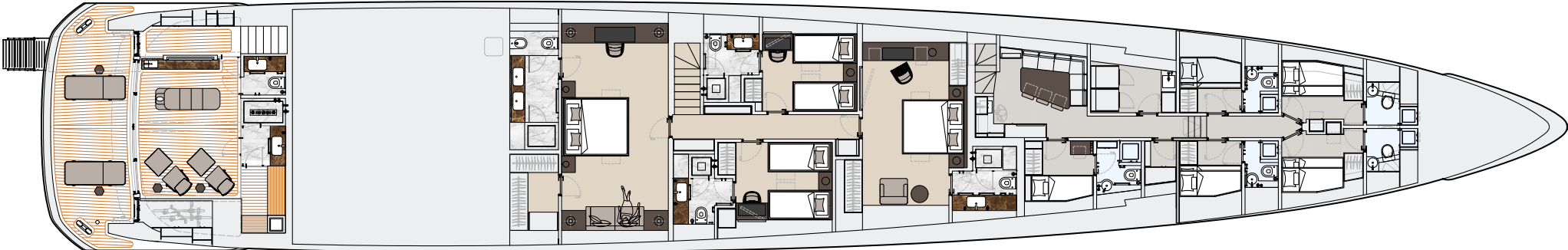


DECK PLANS

GTT 165



Lower deck (6 cabins)



Lower deck (5 cabins)

This drawing is the property of Dynamiq Yachts SARL and is not to be modified, used or reproduced in whole or part without written permission.



GTT 165



GTT 165



GTT 165



GTT 165



GTT 165



GTT 165



GTT 165



GTT 165



GTT 165



Bright Atlantic Blue Metallic



GTT 165



Brown Diamond Metallic



PRICE, OPTIONS & PAYMENT TERMS

GTT 165

BASE PRICE:

€ 24,750,000

OPTIONS*:

<input type="checkbox"/> GTS version (25 knots)	€ 750,000
<input type="checkbox"/> Hybrid (2x 100 kW e-motors + 100 kWh battery pack)	€ 725,000
<input type="checkbox"/> Hull Vane®	€ 385,000
<input type="checkbox"/> «Silent» package (extra insulation, double glass)	€ 215,000
<input type="checkbox"/> "Stabilisation Plus" package	€ 155,000
<input type="checkbox"/> Upper deck Sky Lounge	€ 385,000
<input type="checkbox"/> 6 guest cabins	€ 85,000
<input type="checkbox"/> Sun deck aft pool with sunpads	€ 57,000
<input type="checkbox"/> Forward sunpad	€ 14,000
<input type="checkbox"/> Metallic paint for hull and superstructure	€ 125,000
<input type="checkbox"/> Minotti for Dynamiq package	€ 275,000
<input type="checkbox"/> Fine marbles in luxury areas	€ 79,000
<input type="checkbox"/> Tender Castoldi 21' (full options)	€ 150,000
<input type="checkbox"/> Bowers & Wilkins hi-end audio package	€ 49,000
<input type="checkbox"/> VSAT Intellian V100G antennae	€ 47,000

PAYMENT TERMS:

Contract signature	20%
Keel laying	20%
Main engines installed	25%
Interior installation start	20%
Launch	10%
Delivery	5%

BUILD TIME:

28 months

* More options are available at bedynamiq.com



STRINGENT STANDARDS

GTT 165

In order to create a perfect yacht, from the outset Dynamiq decided to comply with the strictest requirements for comfort and safety. Every Dynamiq yacht is built in accordance with the latest Large Yacht Code (LY4) commercial regulations. This not only makes them ultra safe, but also means they can be chartered to provide an income for their owners.

Dynamiq and its partners are deeply aware of the need for sustainability. We strongly believe that eco-friendly yachts are a requirement for today's owners and their guests. That is why our yachts feature fuel-efficient hulls and reduced air-conditioning loads thanks to special XIR laminated glass.

We are genuinely committed to protecting the world's oceans, coastlines and the global ecology by reducing fuel consumption and emissions through innovative waste management solutions. All Dynamiq yachts are designed and built to meet the strict environmental standards of RINA's Green Star Plus notation.

Moreover, intensive research into reducing sound and vibration and the use of modern insulation materials create a near silent yacht with exceptional acoustic privacy between cabins. These elevated levels of comfort for passengers and crew have been rewarded with RINA's prestigious Comfort Class notation.



THE SHIPYARD

Dynamiq is a private shipyard founded in 2014 and owned by yacht broker and designer Sergei Dobroserdov. His main strategy with Dynamiq was to create a well-organised and owner/broker-friendly facility where clients and their reps can enjoy a creative and transparent construction process.

Dynamiq is the only shipyard in Italy building yachts to North European standards that are 100% created by leading naval architects and structural or mechanical engineering companies in the Netherlands. Dynamiq production is located in the picturesque area of Massa on Italy's Tuscan coast. This modern and high-tech facility is fitted out for building the full range of Dynamiq superyachts up to 50 metres in length with various powertrain options, including hybrid technology. The Dynamiq Yachts production facility offers the highest standards of working environment and quality control.

Come to Dynamiq if you want:

1. Original contemporary design;
2. Top-quality full-aluminum construction;
3. Complete Dutch engineering with naval architecture by Van Oossanen;
4. Top-class contractors and leading brand partners from interior design to high-end audio-visual;
5. Competitive Italian prices.



DYNAMIQ RANGE

THE GRAN TURISMO TRANSATLANTIC SERIES



Model	GTM 90	GTT 115	GTT 135	GTT 160	GTT 165
LOA	27,5 m / 90'	35.5 m / 115'	41 m / 135'	49.5 m / 162'	50 m / 165'
Beam	6.7 m / 21' 11"	7.1 m / 23' 3"	8.2 m / 26' 11"	8.7 m / 28' 6"	8.5 m / 27' 10"
Draft	1.75 m / 5' 9"	1.45 m / 4' 9"	1.8 m / 5' 11"	2 m / 6' 6"	2 m / 6' 6"
Max speed	31 knots	21 knots	21 knots	17 knots	20 knots
Range	900 nm @ 15 knots	3,400 nm @ 10 knots	3,000 nm @ 12 knots	4,000 nm @ 10 knots	4,000 nm @ 12 knots
Engines	3x Volvo Penta, 735 kW	2x MAN, 1,213 kW	2x MAN, 1,213 kW	2x MAN i6, 537 kW	2x MTU 8V, 932 kW
Hull / superstructure	Aluminium, 5083	Aluminium, 5083	Aluminium, 5083	Aluminium, 5083	Aluminium, 5083
Tonnage	150 GT	199 GT	299 GT	399 GT	450 GT
Guests	8 in 4 cabins	10 in 5 cabins	11 in 5 cabins	12 in 6 cabins	12 in 6 cabins
Crew	4 in 2 cabins	6 in 3 cabins	6 in 3 cabins	8 in 4 cabins	9 in 5 cabins
Build time	18 months	16 months	16 months	24 months	28 months
Price	starting at 7,500,000 €	starting at 12,500,000 €	starting at 16,500,000 €	starting at 19,900,000 €	starting at 24,750,000 €



DYNAMIQ RANGE

THE GLOBAL SERIES



Model	G 290 Jaeger	G 300	G 350	G 380	G 440
LOA	29 m / 95'	30.5 m / 100'	35 m / 114'	38 m / 125'	44 m / 144'
Beam	8 m / 26' 3"	7.5 m / 24' 7"	8.5 m / 27' 10"	8.5 m / 27' 10"	9.2 m / 30' 2"
Draft	1.7 m / 5' 7"	1.45 m / 4' 9"	1.8 m / 5' 3"	2.4 m / 7' 10"	2 m / 6' 6"
Max speed	16 knots	19 knots	16 knots	15 knots	17 knots
Range	3,500 nm @ 10 knots	3,000 nm @ 10 knots	3,100 nm @ 10 knots	4,500 nm @ 10 knots	5,000 nm @ 10 knots
Engines	2x MAN, 882 kW	2x MAN, 882 kW	2x MAN, 882 kW	2x MAN, 735 kW	2x MAN, 882 kW
Hull / superstructure	Aluminium, 5083	Aluminium, 5083	Aluminium, 5083	Steel / Aluminium	Aluminium, 5083
Tonnage	220 GT	200 GT	299 GT	385 GT	499 GT
Guests	10 in 5 cabins	10 in 4 cabins	10 in 5 cabins	10 in 5 cabins	10 in 5 cabins
Crew	4 in 2 cabins	4 in 2 cabins	6 in 3 cabins	7 in 4 cabins	7 in 4 cabins
Build time	22 months	22 months	22 months	24 months	28 months
Price	starting at 9,900,000 €	starting at 9,400,000 €	starting at 16,450,000 €	starting at 18,100,000 €	starting at 23,500,000 €






LIVE SMART. BE DYNAMIQ.



Via Massa Avenza 85, 54100 Massa, Italy

www.bedynamiq.com

 @bedynamiq