

68
SPORT YACHT



SEEK

*We believe that to stop seeking
in life is to stop living.*

*Which is why we never let the sun set
without knowing we looked for more.*

The most innovative design.

Exhilarating engineering.

Jaw-dropping performance.

Breathtaking attention to detail.

*Awe-inspiring motoryachts to make the
heart race and the soul sing.*

*By daring to go where others don't, we'll
take you to places others only dream of.*

*To do this, we constantly
seek perfection.*

*And then, when we think
we've found it?*

We seek more.

MORE



CONTENTS

| | |
|-----------------------|----|
| Introduction | 04 |
| Heritage | 06 |
| Design & Innovation | 08 |
| 100 over 100FT | 10 |
| Craftsmanship | 12 |
| Individuality | 14 |
| 68 Sport Yacht | 16 |
| General Arrangements | 26 |
| Specifications | 28 |
| Awards & Achievements | 30 |
| Acknowledgements | 31 |



SEEKING A DREAM, MAKING A WORLD

In 1969, Robert and John Braithwaite were two brothers with a dream – to create a boat to surpass anything made before.

That same year, the Braithwaites built the first Sunseeker. It was the seed of a whole new world.

Steadily and surely, the brothers grew their business from their small shipyard in Poole on the south coast of England.

Always seeking better boat building techniques, each craft became more ambitious, more creative – and consequently more successful – than the last.

Now, 50 years on, Sunseeker International has over 80 dealerships networked around the world, delivering over 150 boats a year globally.



EXCELLENCE. ALWAYS

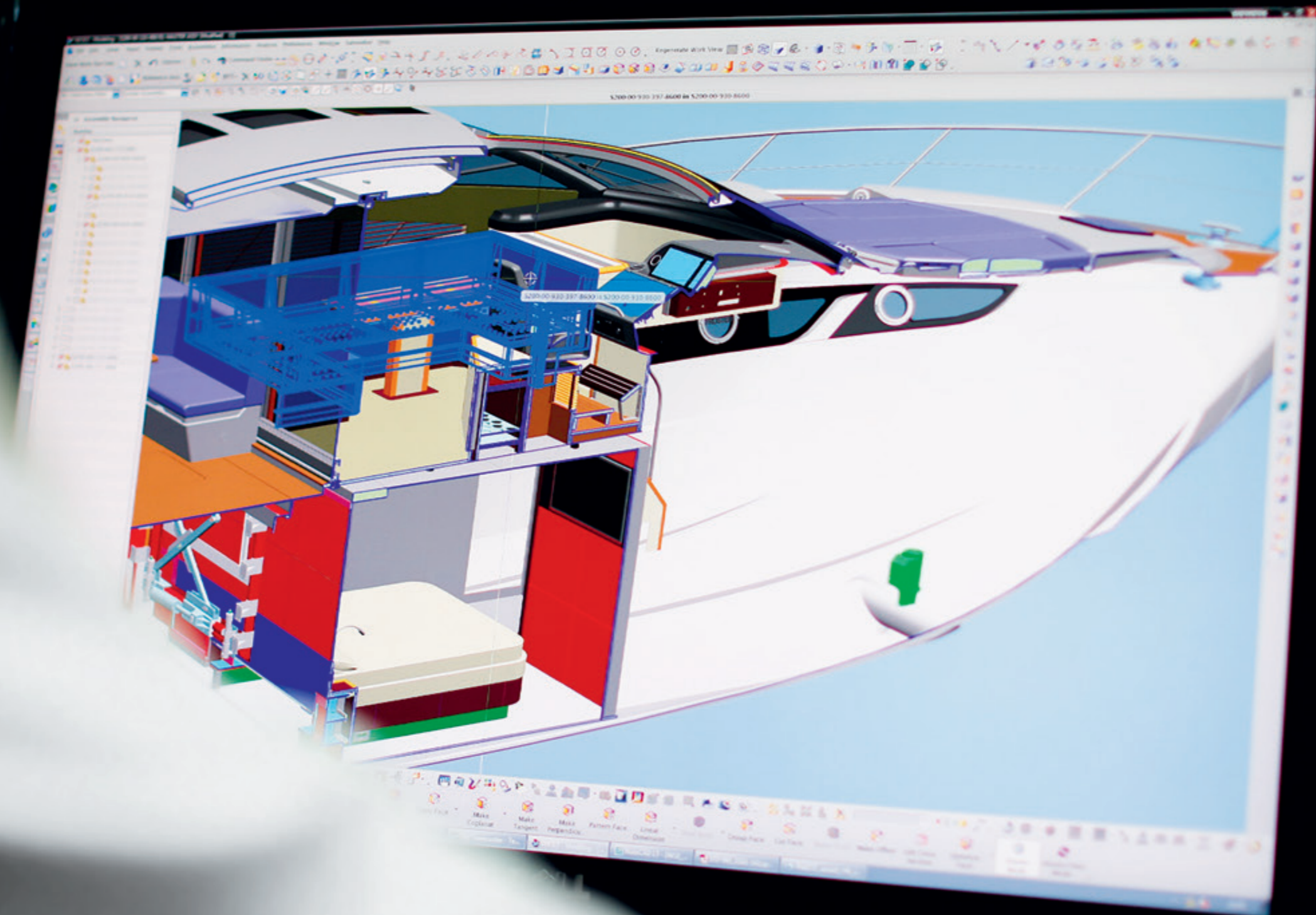
When the Braithwaite brothers started up the engine of a small, open-cockpit speedboat in 1969, it wasn't just the Hostess 17 that roared into life. It was a new standard of yacht making.

Today, their passion to exceed boundaries is as strong as ever before, brought to life by a team of over 2,000 highly skilled designers, engineers and master craftsmen.

Bold new creations like the 155 Yacht keep us pushing our standards ever further, year upon year.

Just as we have always done.

The flagship 155 Yacht is the epitome of our tireless precision and attention to detail. It is this ceaseless desire to always excel in every detail that gives every Sunseeker its vital presence, performance and luxury.



THROUGH INNOVATION COMES EXHILARATION

Intelligent innovation is the philosophy that rules everything we create.

It is why we have become the only manufacturer to produce a luxury yacht range from 50 to 155ft under one name.

Our in-house design team, still steadfastly guided by John Braithwaite, is at the vanguard of marine design, technology and engineering excellence.

It is a dream team with the incomparable vision, confidence and skill to continually innovate our boat design – to create ever more thrilling experiences and adventures. Invention for inspiration.

It is the simple reason why customers the world over await the next Sunseeker with such anticipation.

Because the world knows every new Sunseeker promises innovation that truly exhilarates.



100 OVER 100FT

It is a landmark that signals a bold new age for Sunseeker.

A milestone that measures the sheer breadth of our range of exceptional yachts, built upon a heritage of innovation and craftsmanship spanning 50 years.

On 9 September 2015, we held an exclusive celebration at Cannes Yachting Festival to recognise the delivery of our 100th luxury performance yacht in the 100ft+ superyacht category.

It was summer 2000 that we first launched a model over 100ft long – the unforgettable 105 Yacht, which went on to win two of the world's most prestigious accolades in the International Superyacht Design awards. It was the first step in our journey to become a major player in the superyacht sector.

Amazingly, it has taken just 15 years to reach our newest milestone.

Today, we produce around seven 100ft+ yachts every year. Our range now encompasses boats from the powerful 101 Sport Yacht to the majestic flagship 155 Yacht, with a world of bespoke options in between.

And of course we're always seeking more. With each new creation, a new best is born. Blending cutting-edge technology with traditional handcraft to create yachts that inspire and delight.

96'

97'

98'

99'

101'

102'

103'

104'



EXCEPTIONAL CRAFT, PROUDLY HANDCRAFTED

A hawk's eye, expert hands and a devilish attention to detail.

Passed from generation to generation, these are the most important skills required to make a Sunseeker.

In an age of digital production and automated assembly, we stay committed to creating hand-built, hand-finished boats – for one simple reason.

There is no better way to craft such an exceptional product.

Inside and out, the extraordinary detail, finish and sheer artistry of our yachts can only be achieved by human qualities.

And, most importantly, no machine can ever give our boats such spirit, or take such pride in their creation – a vitality passed on to every owner.



MAKE IT YOUR SIGNATURE

Your signature is truly unique.

No-one else has one quite the same. And so it should be with your very own Sunseeker.

Which is why we have our truly unique Bespoke service, offered for yachts 100ft and above. It offers you something truly unique. A blank sheet of paper for you to create a yacht personalised in any way you wish.

From floor plans to unique furnishings, your imagination and passion can be fully expressed.

With some of Britain's finest in-house interior designers at your side, you can choose materials, fabrics and finishes to reflect your unique desires and individuality.

To give your Sunseeker something no-one else can. Your signature.

Bespoke



68 SPORT YACHT

| | | |
|-----------------------------|--|-------------|
| Length overall | 21.7m | 71'2" |
| Beam | 5.09m | 16'9" |
| Draft | 1.58m | 5'2" |
| Displacement | 37,300kg | 82,232lb |
| Fuel capacity | 3,500 litres | 925 US gal. |
| Fresh water capacity | 800 litres | 211 US gal. |
| Accommodation | Up to 6 guests & up to 2 crew members | |
| Engine options | Up to 2 x 1550PS | |
| Performance | Up to 42 knots | |
| Range | Up to 300 nautical miles | |
| Drives | Shafts or Arneson surface drives | |



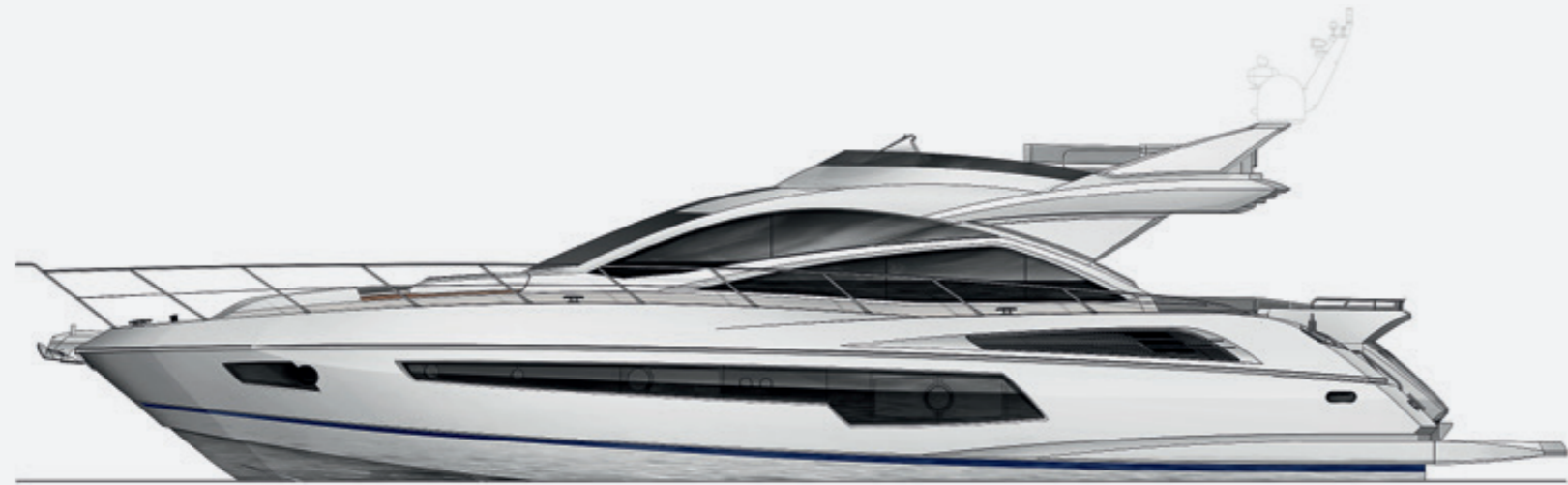






GENERAL ARRANGEMENTS

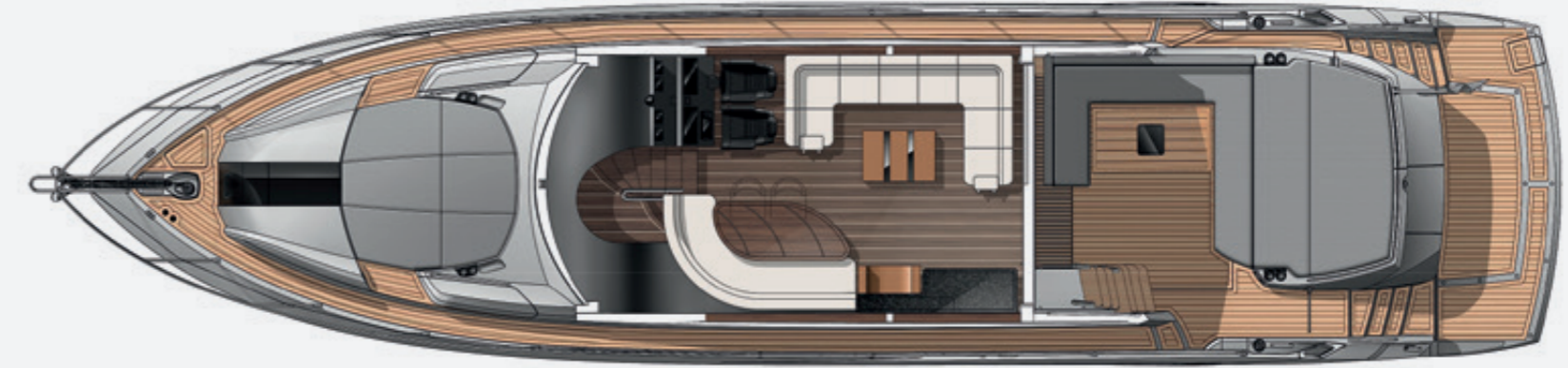
68 SPORT YACHT



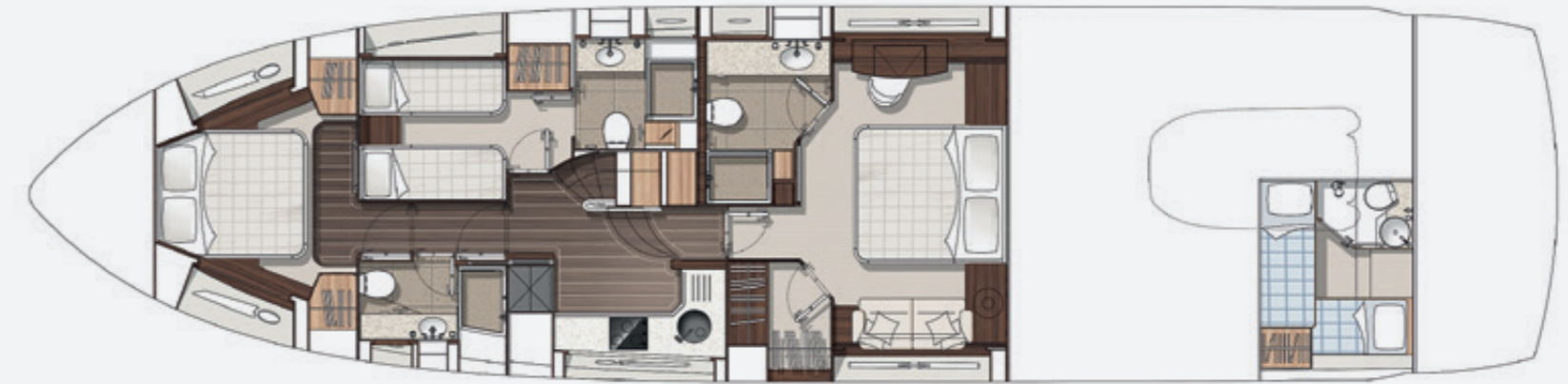
SIDE PROFILE



SPORT BRIDGE
Shown with optional teak side and sport bridge decking



MAIN DECK
Shown with optional teak side decking



LOWER DECK
Shown with optional crew cabin

STANDARD SPECIFICATIONS

1 Construction

Hand-laid GRP
Gel coat including stripes
Vinylester skin coat with powderbound mat
Stitched multi-axial reinforced single-skin bottom
Balsa-cored hull topsides
PVC foam-cored deck and superstructure
Hull stiffened with longitudinal stringers supported by transverse bulkheads and floors

2 Deck

Fittings in stainless steel
8 x stainless steel deck cleats
Pulpit and cockpit rails
Stainless steel fendering with rubber insert
Curved safety glass windscreen
Stainless steel bow roller with anchor stop
Stainless steel bow plate
Delta anchor and 60m chain (galvanised)
Electric winch and capstan with deck and interior helm controls
Chain locker with fender storage
Fender tie bar under anchor locker lid
Fore deck coach-roof storage lockers
Fuel fillers port and starboard
Fresh water filler
IMCO navigation lights
2 x Pantograph windscreen wipers and washers
Garage for tender
Ensign staff and socket

3 Bathing Platform

Hydraulic lifting platform
Teak-laid bathing platform and steps
Hot and cold swimming shower
Fresh water marina connection
Dockside AC shore power connection
Stainless steel swimming ladder

4 Aft Cockpit

Self-draining
Teak-laid cockpit decking
Stern safety door
Cockpit speakers with CD remote
Upholstered seating around cockpit table
Large stern sunbather

Lockers beneath seating
Overhead cockpit lights 24v
Low-level courtesy lights 24v
Engine room access hatch
Sport Bridge access stairs
Boat hook

5 Sport Bridge Layout

Large U-shaped seating
Teak table with stainless steel leg
Helm seat and navigation seat
Hydraulic power steering
2 x radar/chart plotter with GPS
Autopilot
Electronic depth and speed displays
VHF radio
Magnetic compass
Horn control
Switch panel
Remote controlled spotlight
Trim tab control
Sunpad area
Bimini top in canvas with stainless steel frame
Wetbar with GRP lid
Hotplate griddle
Ice maker
Ice maker filter
Pair of marine speakers with remote connected to cockpit stereo
Teak stairs from cockpit
Teak cockpit decking

6 Interior Helm Console

Twin helm seats
Navigation console with chart area
Hydraulic power steering
Leather rimmed steering wheel
Analogue engine instrumentation
Chart plotter with GPS
Radar open scanner
Autopilot
Speed and depth instrumentation
VHF radio with DSC
Rudder indicator
Water tank gauge
Fuel tank gauge

Trim tab controls
Single-lever electronic engine controls
Magnetic compass
Waterproof plug and socket 12v
Horn
Windscreen wipers and washers
Glass holders
Hand-held fire extinguisher

7 Deck Saloon

Separate dining area with table
Stowage beneath seats
Television 55" on fall and rise system
Blu-ray/DVD/CD cinema sound system
Drinks cupboard
Overhead halogen lighting LED 24v
Stainless steel sliding door to cockpit
Main control panel (AC/DC)
Generator controls
Air conditioning
3 x double AC sockets
Wood flooring
Choice of interior finishes and veneers
Scatter cushions

8 Galley

Sink and drainer
3-ring ceramic touch-control hob and extractor fan
Electric refrigerator
Electric freezer
Microwave convection oven
Hot and cold water
Rubbish bin
Cupboard and drawer storage

9 Forward Stateroom

8 place crockery set
8 place cutlery set
2 x double AC sockets
Hand-held fire extinguisher
First aid kit
Wood flooring

10 Forward En Suite Shower Room

Double berth
Storage beneath
Drawer in base-end
2 x reading lights 24v

Outboard shelving and cupboards
Overhead bedside cupboards
Hanging wardrobes with mirrored panel
Overhead lights LED 24v
2 x opening portholes with mosquito screens
Portlight blinds
Deck hatch with blind and mosquito screen
Skylight
2 x double AC sockets
Door to shower room
Fitted carpet
Air conditioning
32" television
Blu-ray/DVD/CD player with speakers

11 Starboard Guest Cabin

2 x single berths
Under-berth storage
2 x reading lights 24v
Hanging wardrobe
Overhead lighting LED 24v
Opening porthole with mosquito screen and blind
Double AC socket
Fitted carpet
Air conditioning
22" television
Blu-ray/DVD/CD player with speakers

12 Starboard En Suite Shower Room

Washbasin
Taps and accessories
Hot and cold water supply
Separate shower compartment
Electric toilet
Extractor fan
Mirrored vanity unit
Shelved cupboard
Toothbrush and glass holder
Soap dispenser
Towel ring and towels
Overhead lights LED
Opening porthole with mosquito screen and blind
Razor socket 240/110v

13 Master Aft Stateroom

Double berth
Cupboard and drawer stowage
2 x reading lights 24v
Bedside drawers
Walk-in wardrobe
Overhead lights LED 24v
2 x large windows with opening portholes, mosquito screens and blinds
Two double AC sockets
Door to shower room
Fitted carpet
Settee
Air conditioning
32" television
Blu-ray/DVD/CD player with speakers

14 Aft En Suite Shower Room

Washbasin
Taps and accessories
Hot and cold water supply
Separate shower compartment
Electric toilet
Extractor fan
Mirrored vanity unit
Shelved cupboard
Toothbrush and glass holder
Soap dispenser
Towel ring and towels
Overhead lights LED

Opening porthole with mosquito screen and blind
Razor socket 240/110v

15 Crew Cabin

Entrance door from rear cockpit
Two single berths
Wardrobe
Storage locker
Opening porthole with mosquito screen
Overhead lights LED
Reading lights 24v DC
Double AC socket
Air conditioning
Separate shower room with hot and cold water
Electric toilet and holding tank
Shaver socket 240/110v

16 Electrical System

19kW 50Hz generator with underwater silent exhaust and sound shield
AC dockside connection
Galvanic isolator
24v and 12v DC electrical system with full circuit breaker protection
8 x engine batteries 24v circuit
4 x domestic batteries 24v circuit
2 x generator batteries 12v circuit
Alternator split charging system
Remote battery switches controlled from locker in cockpit
Battery charger for 24v circuits
Battery charger for 12v circuits
Water heater
AC electrical sockets throughout the boat
24v hand light and cable

17 Engine Compartment and Ancillaries

Soundproofing throughout
Fuel filters/water separators to engines
Fuel filters/water separators to generators
Automatic bilge and flood pumps with high-level alarms
Generator exhaust silencers and water separators
Engine exhaust dry risers and water injection
Strainers to all raw water inlets
Power steering – hydraulic control steering

Garage door and trim tabs hydraulic control unit
Lifting platform hydraulic control unit
Air intakes fitted with emergency shutdown flaps (automatically operated)
Air extraction fans (AC) fitted with butterfly shutdown dampers
Exhaust gas temperature sensor
Fluorescent lights (AC)
Engine room fire extinguishing system (FM200)
1 x AC 220v socket
1 x 24v socket
Portable CO₂ fire extinguisher
Inspection lamp

18 Underwater Gear

Bow thruster – Electric 24v
Seawater strainers – nickel plated bronze
Full cathodic bonding system to zinc anodes
Hydraulic trim tabs – stainless steel
Propeller shafts – Temet 25
High performance rudders – AB2
P-brackets – NAB nickel aluminium bronze c/w water lubricated bearing
Self-aligning shaft seal including spare seal
5-blade AB2 bronze propellers

19 Systems

Hydraulic power steering
Electric toilet system with integral macerator (24v)
Toilets discharging overboard or to black water tank
Black water tank discharging to dockside or overboard
Aluminium fresh water tank with electric sending unit
Fuel tank with electric sending unit
Water pressure system (24v)
Washbasins, showers and air conditioning fan coils to drain to grey water tank
Grey water tank discharging overboard
Self-contained air conditioning system (reverse cycle) AC
Bilge pumping system (24v)
Manual/automatic fire extinguishing system combined with engines, generators and fans shutdown
Auxiliary hydraulics for trim tabs and platform (24v)

20 Miscellaneous

Toolkit
Boat hook
4 x mooring ropes
8 x fenders
3 sets towels

Optional Extras

Teak side decks
Hydraulic gangway
Bow sunbathing cushions

AWARDS AND ACHIEVEMENTS

2015

ASIA BOATING AWARDS
Best Brand Presence

2014

WORLD YACHT TROPHIES
101 Sport Yacht – 'Best Exterior Design'

ASIA BOATING AWARDS
Predator 80 – Best Worldwide Production Motoryacht 15M–24M

WORLD SUPERYACHT AWARDS
40 Metre Yacht 'Sea Raider V' – Finalist

2013

ASIA BOATING AWARDS
Best Brand Presence

MOTOR BOAT OF THE YEAR AWARD
28 Metre Yacht – 'Best Custom Yacht'

2012

MOTORBOAT & YACHTING AWARDS
Manhattan 63 – 'Best Flybridge above 55ft'

ROBB REPORT CHINA
'Best of the Best' 28 Metre Yacht

ASIA BOATING AWARDS
28 Metre Yacht – Best Production Motoryacht 24M–40M

WORLD SUPERYACHT AWARDS
Predator 130 'Never Say Never' – Finalist

2011

ASIA BOAT AWARDS
Best Brand Presence in Asia

EUROPEAN CEO CORPORATE LIFESTYLE AWARDS
Best Luxury Brand

SHOWBOATS DESIGN AWARDS FLORIDA
Naval Architecture Motoryacht 'Evil Zana' Predator 130

2010

WORLD SUPERYACHT AWARDS
Predator 130 'Evil Zana' – Finalist

QUINTESENTIALLY AWARDS
Yacht Charter of the Year

SYDNEY BOAT SHOW
Boating Industry Association of NSW – Best Marina Display

SYDNEY BOAT SHOW
Boating Industry Association of NSW – Best Overall Display

ASIA BOATING AWARDS
Predator 60 – Best Production Motoryacht 51 to 80 feet

2009

SYDNEY BOAT SHOW
Display of Excellence

CROATIA BOAT SHOW
Predator 92 Sport – Best in Class

CROATIA BOAT SHOW
30 Metre Yacht – Best in Class

CROATIA BOAT SHOW
Best Boat Show Stand

2008

UK MOTOR BOAT OF THE YEAR AWARDS
Manhattan 60

2007

EUROPEAN POWERBOAT OF THE YEAR
Superhawk 43

ASIA PACIFIC BOATING AWARDS
90 Yacht, Best of the Best

MODERN BOATING MAGAZINE
Portofino 47, Imported Powerboat of the Year

AUSTRALIAN MARINE INDUSTRIES FEDERATION AWARDS
Predator 62, Imported Powerboat of the Year

NOMINATED BY THE SUPERYACHT SOCIETY
37 Metre Yacht 'The Snapper'

QUEEN'S AWARD FOR ENTERPRISE
International Trade

ROBERT BRAITHWAITE IS HONOURED WITH CBE
The Queen's Birthday Honours List

2006

NOMINATED FOR THREE SUPERYACHT AWARDS
Predator 108 'SHIVER'

2005

AUSTRALIAN MARINE INDUSTRIES FEDERATION AWARDS
75 Yacht, Non-Trailable Boat Award

AUSTRALIAN MARINE INDUSTRIES FEDERATION AWARDS
Portofino 46, Commendation

MODERN BOATING, POWER BOAT OF THE YEAR AWARDS
Predator 68, Imported Powerboat of the Year

BOATS.COM MARINE INDUSTRY WEB AWARDS
Manufacturers Category for www.sunseeker.com

2004

SYDNEY BOAT SHOW
Best Overall Display

SYDNEY BOAT SHOW
Best Marina Display

2003

AUSTRALIAN MARINE AWARDS
Manhattan 56, Award for Excellence

AUSTRALIAN MARINE AWARDS
Predator 68, Best Imported Non-Trailable Yacht

2002

ENTREPRENEUR OF THE YEAR AWARD
Robert Braithwaite MBE

2001

BEST POWER DESIGN AWARD
105 Yacht, The Superyacht Society

BEST POWER INTERIOR AWARD
105 Yacht, The Superyacht Society

PRESIDENT'S AWARD
Southern California Marine Association

2000

QUEEN'S AWARD FOR ENTERPRISE
Continuous Innovation and Development

THE TIMES EXPORTER OF THE YEAR
Times Export Awards

ROBB REPORT AWARD
Best of the Best, Boating and Sailing

1999

ROBB REPORT AWARD
Best of the Best, Boating and Sailing

MOTORBOAT OF THE YEAR
Predator 75, BT British Nautical Awards

1998

SUPERYACHT DESIGN AWARD
Manhattan 74, Superyacht Design Awards

EDITOR IN CHIEF AWARDS
Yachts Magazine

1997

LIFETIME ACHIEVEMENT AWARD
Robert Braithwaite MBE, RYA Awards

1996

MOTORCRUISER OF THE YEAR AWARD
RYA British Nautical Awards

EXPORTER OF THE YEAR AWARD
DCCI Export Awards

1995

BOAT BUILDER OF THE YEAR AWARD
RYA/BMIF British Nautical Awards

1994

QUEEN'S AWARD FOR EXPORT ACHIEVEMENT
Queen's Awards for Industry

1992

BEST IN THE WORLD AWARD
Renegade 60, Boating Magazine

ROBERT BRAITHWAITE IS HONOURED
WITH MBE

The Queen's Birthday Honours List

1990

EXPORTER OF THE YEAR
SW International Business Awards

1989

QUEEN'S AWARD FOR EXPORT ACHIEVEMENT
Queen's Awards for Industry

1987

QUEEN'S AWARD FOR EXPORT ACHIEVEMENT
Queen's Awards for Industry

ACKNOWLEDGEMENTS

PHOTOGRAPHERS:

Tom Benson
Quin Bisset
Martin Brent
Jeff Brown
Andy Cahill
Gary Castle
Joe McCarthy
Ian Winstanley

CLOTHING & ACCESSORIES:

Roja Dove
Hansgrohe
Haviland
Heirlooms
Jo Malone
Milena M.
Tresor Paris
Porta Romana
SEABOB
Itsomi Sotogrande
Williams Jet Tenders

